



ZIMBABWE

2017 Annual Education Statistics Profile

Ministry of Primary and Secondary
Education

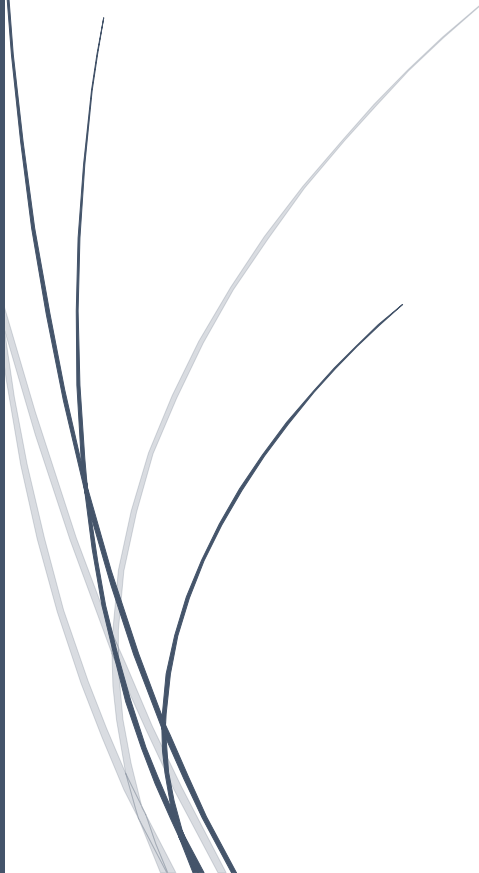


Table of Contents

Table of Contents.....	i
List of Tables.....	iv
List of Figures	ix
Chapter 1: Preamble	1
1.1 Introduction to Zimbabwe Education System	1
1.2 Primary Level.....	2
1.2.1 <i>Infant Education</i>	2
1.2.2 <i>Junior Education</i>	2
1.3 Secondary Level	2
1.3.1 <i>Lower Secondary Education</i>	2
1.3.2 <i>Upper Secondary Education</i>	2
1.4 Zimbabwe Administrative Boundaries.....	3
Chapter 2: Demand for Education	1
2.1 Population Data	1
2.2 Schools.....	3
2.3 Classification of Schools.....	4
2.3.1 Registration Status	4
2.3.2 Distribution of Schools by Location	4
2.3.3 Classification of Schools by Capitation Grant Type	5
2.3.4 Government or Non-Government	6
2.3.5 Responsible Authority	7
Chapter 3: Access to Education	8
3.1 New Entrants into Grade 1	8
3.2 New Entrants into Form 1	9
3.3 ECD Enrolment	9
3.4 Primary School Enrolment	11
3.5 Secondary School Enrolment	14
Chapter 4: Access Rates	18
Chapter 5: Participation Rates	20
5.1 ECD Participation Rates	20
5.2 Primary School Participation Rates	22

5.3	Secondary School Participation Rates	25
Chapter 6 Equity		30
6.1	Orphaned and Vulnerable Children (OVC)	30
6.2	Number of OVC by Type.....	31
6.3	Number of Learners by Impairments	34
6.4	Orphaned and Vulnerable Children (OVC) and BEAM	36
Chapter 7: Teaching Staff.....		38
7.1	Teacher Trends.....	38
7.2	ECD Teachers	39
7.3	ECD Learner -Teacher Ratios	39
7.4	Primary School Teachers	40
7.5	Primary School Learner-Teacher Ratios	41
7.6	Secondary School Teachers	42
7.7	Secondary School Learner - Teacher Ratios.....	42
Chapter 8: Internal Efficiency.....		44
8.1	Repetition.....	44
8.2	Dropouts	45
8.3	Promotion, Repetition and Dropout Rates	47
8.4	Survival Rates	48
8.5	Completion Rate	48
8.5.1	ECD Completion Rate	49
8.5.2	Primary School Completion Rate	49
8.5.3	Secondary School Completion Rate	50
Chapter 9: Facilities.....		51
9.1	Classrooms	51
9.2	Access to Electricity	52
9.3	WASH Facilities	53
9.3.1	Learner and Teacher to Toilet Ratio	53
9.4	Number of Toilets by Type and Province	54
9.5	Access to water in schools	56
9.6	Health and Feeding.....	57
9.7	Sporting and Specialist Facilities	59
9.8	ICT, Computer Access, Use and Connectivity	60

9.9 Seating and Writing Places	61
Chapter 10: Non-Formal Education	62
Chapter 11: Learning Outcomes	64

List of Tables

Table 1: Distribution of Projected School Age Population by Sex	1
Table 2: School Age Population by Level and Province	2
Table 3: Percentage of School-Age Population Distribution by Level and Gender	2
Table 4: Number of Schools by Level and Year	3
Table 5: Distribution of Schools by Province and Level	3
Table 6: Distribution of Schools by Level and Province	3
Table 7: Number of Schools by Level, Registration Status and Province	4
Table 8: Distribution of Schools by Grant Classification and Level	5
Table 9: Distribution of Primary Schools by Province and Responsible Authority	6
Table 10: Distribution of Secondary Schools by Province and Responsible Authority	6
Table 11: Distribution of Schools by Responsible Authority	7
Table 12: New Entrants into Grade 1, 2012-2017	8
Table 13: New Entrants into Grade 1 by Age and Sex	8
Table 14: New Entrants into Grade 1 by Age, Location and Sex	8
Table 15: New Entrants into Form 1 by Age and Sex	9
Table 16: New Entrants into Form 1 by Age, Location and Sex	9
Table 17: ECD Enrolment Trend by Sex, 2012-2017	9
Table 18: ECD Enrolment by Grant Classification by Sex	10
Table 19: ECD Enrolments by Registration Status and Sex	10
Table 20: ECD Enrolments by Age and Sex	10
Table 21: ECD Enrolments by Province and Sex	11
Table 22: ECD Enrolments by Location and Sex	11
Table 23: Primary School Enrolment Trend, 2012-2017	11
Table 24: Primary School Enrolments by Sex and Grade	12
Table 25: Primary School Enrolment by Location, Sex and Grade	12
Table 26: Primary School Enrolment by Type, Sex and Grade	12
Table 27: Primary School Enrolment by School Registration Status, Sex and Grade	13
Table 28: Primary School Enrolment by Age and Grade	13
Table 29: Primary School Enrolments by Province and Grade	13
Table 30: Secondary School Enrolment Trend, 2012-2017	14
Table 31: Secondary School Enrolments by Sex and Form	14

Table 32: Secondary School Enrolment by School Location, Sex and Form	14
Table 33: Secondary School Enrolments by Grant Classification, Sex and Form	15
Table 34: Secondary School Enrolments by School Registration Status, Sex and Form	15
Table 35: Secondary School Enrolments by Age and Form	15
Table 36: Secondary School Enrolments by Province and Form	16
Table 37: Total Enrolment ECD, Primary and Secondary by Sex	16
Table 38 Enrolment by Level, Province and Sex	17
Table 39: Apparent and Net Intake Rates Trends for Primary School, 2000-2017	18
Table 40: Primary School Apparent Intake Rates by Province and Sex	18
Table 41: Primary School Net Intake Rates by Province and Sex	18
Table 42: Secondary School Apparent Intake Rate and Net Intake Rate	19
Table 43: Secondary School Apparent Intake Rate by Province	19
Table 44: Secondary School Net Intake Rate by Province	19
Table 45: Gross Enrolment Ratio and Net Enrolment Ratio Trend, 2012 to 2017	20
Table 46: ECD School Age Population and Enrolment	20
Table 47: ECD GER, NER and GPI by Sex and Province	21
Table 48: ECD A GER, NER and GPI by Sex and Province	21
Table 49: ECD B GER, NER and GPI by Sex and Province	22
Table 50: Primary School Gross Enrolment Ratio and Net Enrolment Ratio Trend, 2012-2017	22
Table 51: Primary School Age Population and Enrolments	22
Table 52: Primary GER, NER and GPI by Sex and Province	23
Table 53: Grade Specific Net Enrolment Rate (NER) by Sex and Grade	23
Table 54: Grade Specific Gross Enrolment Ratio by Grade and Sex	23
Table 55: Primary School ASER by Age and Sex	24
Table 56: GER and NER by Province and Sex, Infant Level	24
Table 57: GER and NER by Province and Sex, Junior Level	24
Table 58: Secondary School Gross Enrolment Rate (GER) by Sex, 2012-2017	25
Table 59: Secondary School Net Enrolment Rate, 2012-2017	25
Table 60: Secondary School-Age Population and Enrolment by Sex, Form 1-4	25
Table 61: Secondary Form 1-4 NER and GER by Province and Sex	26
Table 62: Secondary School Form 5-6 Age Population and Enrolment by Sex	26
Table 63: Secondary GER and NER, Form 5-6 by Province and Sex	27
Table 64: Secondary School Form 1-6 Population and Enrolment by Sex and Province	27

Table 65: Secondary Form 1-6 GER and NER by Province and Sex	28
Table 66: Grade Specific Net Enrolment Rate	28
Table 67: Grade Specific Gross Enrolment Rate	28
Table 68: Secondary School ASER	29
Table 69: ECD, Primary Grade 1-7 and Secondary Orphaned and Vulnerable Children (OVC) by Province	30
Table 70: ECD, Primary Grade 1-7 and Secondary Percentage of Learners who are OVC	30
Table 71: Number of ECD OVC by Type, Sex and Province	31
Table 72: Percentage of ECD OVC by Type, Province and Sex.	31
Table 73: Number of Primary School OVC by Type, Sex and Province	32
Table 74: Percentage of Primary School OVC by Type, Sex and Province	32
Table 75: Number of Secondary School OVC by Type, Sex and Province	33
Table 76: Percentage of Secondary School OVC by Type, Sex and Province	33
Table 77: Enrolment by Impairments	34
Table 78: Primary Enrolments by Impairments, Sex and Province	35
Table 79: Secondary Enrolments by Impairments, Sex and Province	35
Table 80: Primary School, Learners Paid for	36
Table 81: Primary School Learners on BEAM with Claims Outstanding and Paid For by Province and Sex	36
Table 82: Secondary School, % OVC being assisted	37
Table 83: Secondary School Learners on BEAM with Claims Outstanding and Paid For by Province and Sex	37
Table 84: Primary and Secondary Teachers LTR 1999-2016	38
Table 85: Number of Trained and Untrained Teachers by Level and Province	38
Table 86: Number of ECD Teachers by Location, Qualification Status and Sex	39
Table 87: Number of ECD teachers by Qualification and Sex	39
Table 88 : Number of ECD Teachers by Qualification Status, Type of Employment and Sex	39
Table 89: Learner to Teacher Ratio	39
Table 90: ECD Teachers by Province, Qualification Status and Teacher to Pupil Ratio	40
Table 91: Number of Primary Teachers by Location, Qualification Status and Sex	40
Table 92: Number of Primary Teachers by Qualification and Sex	40
Table 93: Number of Primary Teachers by Qualification Status, Type of Employment and Sex	41
Table 94: Learner to Teacher Ratios by Location	41
Table 95: Primary Teachers by Province and Learner to Teacher Ratio	41

Table 96: Number of Secondary Teachers by Location, Qualification Status and Sex	42
Table 97: Number of Secondary School Teachers by Qualification and Sex	42
Table 98: Number of Secondary School Teachers by Qualification Status, Type of Employment and Sex	42
Table 99: Secondary School Learner to Teacher Ratio by Location	42
Table 100: Secondary Teachers by Province, Qualification Status and Teacher to Learner Ratio	43
Table 101: Repeaters by Sex 2012 to 2017	44
Table 102: Primary Level Repeaters as a Percentage of Enrolment by Sex and Grade	44
Table 103: Secondary Level Repeaters as a Percentage of Enrolment by Sex and Grade	44
Table 104: Repeaters by Province and Level of Education	45
Table 105: Percentage Repeaters by Province and Level of Education	45
Table 106: Dropouts Trends, 2012 to 2017	45
Table 107: Primary School Dropouts by Reasons	46
Table 108: Secondary School Dropouts by Reasons	46
Table 109: Promotion, Repetition and Dropout Rates by Grade	47
Table 110: Transition Rates, Grade 7 to Form 1 and Form 4 to Form 5, 2011 to 2017	47
Table 111: 2016 to 2017 Transition Rates, Grade 7 and Form 4	47
Table 112: Survival Rates for Primary School by Sex	48
Table 113: Survival Rates for Secondary School by Sex	48
Table 114: Completion Rate by Level and Sex, 2012-2017	48
Table 115: ECD Completion Rate by Sex and Province	49
Table 116: Primary Completion Rate by sex and Province	49
Table 117: Lower Secondary School Completion Rate by Province and Sex	50
Table 118: Upper Secondary Completion Rate by Sex and Province	50
Table 119: ECD, Primary and Secondary LCR, 2012-2017	51
Table 120: Primary and Secondary School Enrolments, Number of Classrooms and LCR by Province	51
Table 121: Average Classrooms per School	52
Table 122: Primary and Secondary Schools Main Source of Electricity	52
Table 123: Percentage of Schools without Electricity by School Level and Province	52
Table 124: Percentage of Schools with and without Electricity by Grant Type	53
Table 125: Learners and Teachers to Toilet Ratios by Sex, 2012-2017	53
Table 126: ECD and Primary Learner to Toilet Ratios	53
Table 127: Secondary Learner and Teacher to Toilet Ratios	54

Table 128: ECD Number of Toilets for Learners by Type and Province	54
Table 129: Primary Number of Toilets for Learners by Type and Province	55
Table 130: Secondary School Number of Toilets for Learners by Type and Province	55
Table 131: Number of Primary Schools with Access to Water and Water Sources by Province	56
Table 132: Number of Secondary Schools with Access to Water Sources by Province	56
Table 133: Percentage Primary Schools by Access to Water and Use of Water	57
Table 134: Percentage Secondary Schools by Access to Water and Use of Water	57
Table 135: Percentage of Primary School with Health Teachers, Health Clubs and Support Feeding Programmes by Province	57
Table 136: Percentage of Secondary Schools with Health Teachers, Health Clubs and Support Feeding Programmes by School Level and Province	58
Table 137: Number of Facilities and Total Capacity at Primary Level	59
Table 138: Type and Number of Facilities	59
Table 139: Number of Facilities at Secondary School	59
Table 140: Type and Number of Facilities	59
Table 141: Primary School Computers for Learners, Teachers and Administration	60
Table 142: Secondary Schools Computers for Learners, Teachers and Administration	60
Table 143: Primary School Seating and Writing Places by Province	61
Table 144: Secondary School Seating and Writing Places	61
Table 145: Table 146: Enrolment in NFE Programmes by Province, Sex and Level	62
Table 147: Primary Level Enrolment by NFE level and Sex	62
Table 148: Primary Level Enrolment in NFE Programmes by Province, Registration Status and Sex	62
Table 149: Secondary Level Enrolment by NFE level and Sex	63
Table 150: Secondary Level Enrolment in NFE Programmes by Province, Registration Status and Sex	63
Table 151: Examination Pass Rates for Grade7, O' Level and A' Level from 2014-2017	64
Table 152: Grade 7 Examination Pass Rates 2017 by Province and Sex	64
Table 153: O' Level Examination Pass Rates 2017 by Province and Sex	64
Table 154: A' Level Examination Pass Rates 2017 by Province and Sex	65

List of Figures

Figure 1: Structure of the Education System	1
Figure 2: Zimbabwe Administrative Boundaries by Province, Districts and Wards	1
Figure 3: Zimbabwe Ministry of Primary and Secondary Education Administrative Boundaries by Province, Districts and Wards	1
Figure 4: Distribution of School-Age Population by Sex and Age	1

Chapter 1: Preamble

1.1 Introduction to Zimbabwe Education System

Zimbabwe has two ministries of education namely Ministry of Primary and Secondary Education (MoPSE) and Ministry of Higher and Tertiary Education Science and Technology Development (MoHTESTD). MoPSE is responsible for primary and secondary education that happens in formal and non- formal settings.

The figure below shows the structure of the Zimbabwe Education System. Primary education consists of ECD right up to grade 7. ECD has 2 grades ECD A and ECD B. The later primary comprises grades one to seven. In addition the primary cycle is divided into Infant Education and Junior Education. Graduates of the primary education transition to secondary education which is also divided into two levels, lower and upper secondary.

Learners who are not able to access education services through the formal channel can enroll in non-formal education. There are specific courses that allow learners to move from non-formal into formal and vice versa. The rest of the other levels fall under MoHTESTD.

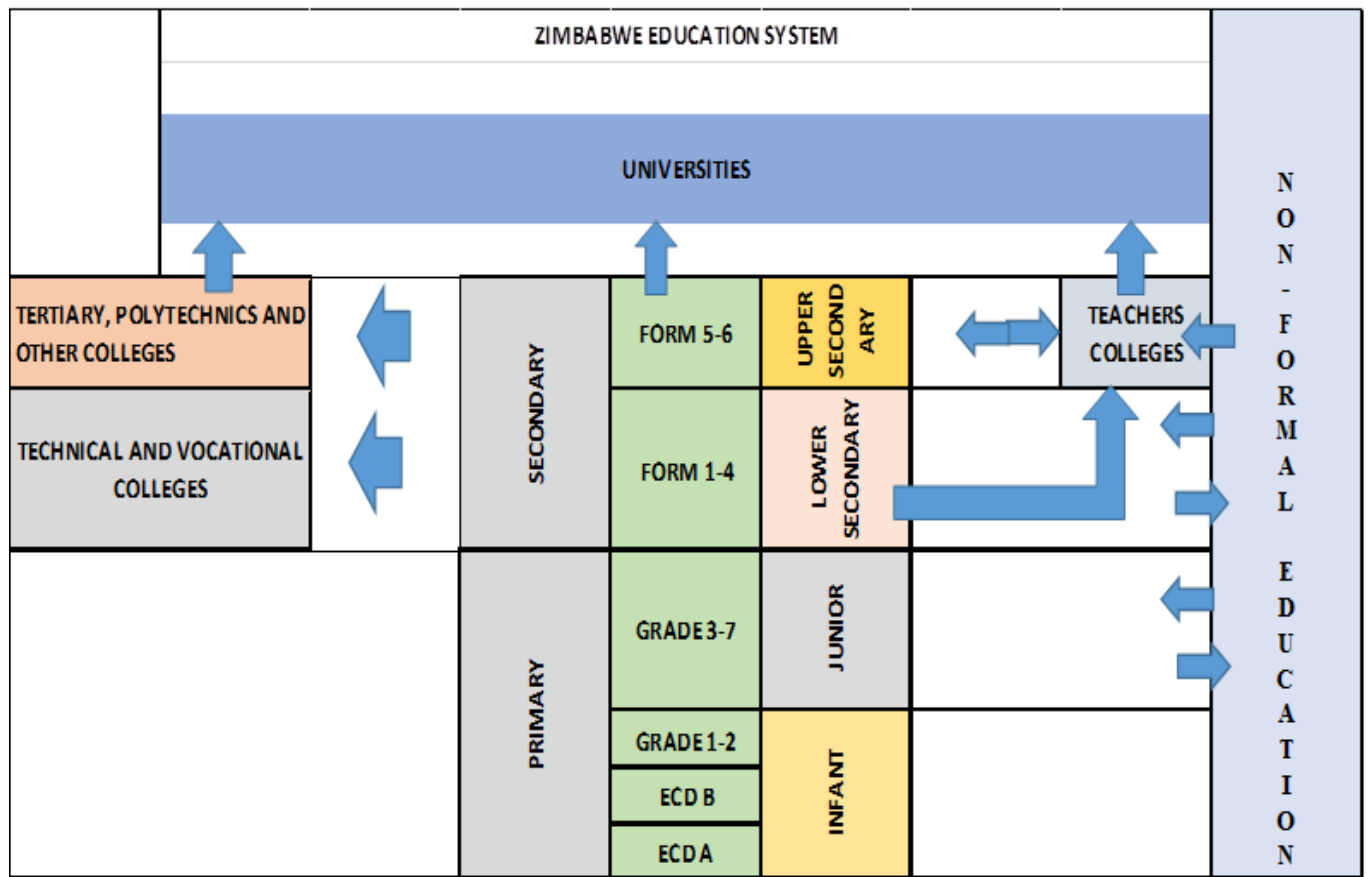


Figure 1: Structure of the Education System

1.2 Primary Level

The primary school system encompasses nine years of schooling which are divided into infant education and junior education.

1.2.1 Infant Education

Infant education consists of 4 years of schooling from ECD A to Grade 2. At ECD level children are developed through play. Pre-formal skills in reading, writing, speaking and listening are expected to be mastered by ECD children. At Grade 1 and Grade 2 there is formal teaching of all the subjects in the school curriculum.

1.2.2 Junior Education

Junior education consists of 5 years of schooling from Grade 3 to Grade 7. At the end of Grade 7 learners sit for national public examinations to mark the end of the primary cycle. There is a policy of automatic promotion to the next level, from Grade 1 to Form 4 (passing or failing does not prohibit learners from progressing to the next level).

1.3 Secondary Level

The secondary school system encompasses six years of schooling which consists of the lower secondary education and upper secondary education.

1.3.1 Lower Secondary Education

The lower secondary school level is a four-year programme culminating in the Ordinary Level Certificate. In the first two years learners are exposed to varied experiences and are afforded an opportunity to discover their own intellectual abilities, aptitudes and interests. They are offered the full curriculum viz, the Sciences, Humanities, Languages, and must do at least one of Business/Commercial subjects, Computer Studies and Technical/Vocational Education subjects. This enables the learners to pursue subjects they are good at during the last two years of secondary education. Upon completion of this cycle, learners can join the world of work, go for professional training in tertiary colleges, or proceed to do a further two years at high school.

1.3.2 Upper Secondary Education

The two year upper secondary level offers Advanced Level studies in preparation for tertiary and university education. For learners to enter this level they have to pass their Ordinary Level Examinations (5 subjects or more with Grade C or better).

1.4 Zimbabwe Administrative Boundaries

Zimbabwe is divided into 10 provinces, 88 districts and 1958 wards in its administrative divisions. Resources and /or service provision are provided largely using these structures. Provision of primary and secondary education for example is targeted to primary and secondary school age populations who reside in these administrative divisions. Population census data is collected and analysed using these same structures.

The Ministry of Primary and Secondary Education (MoPSE) has slightly different administrative divisions for the purposes of its education management. At provincial level the divisions are the same. It is at district level where these differ. While some cities and towns are classified as separate districts administratively, they are amalgamated with other districts in the education divisions. There are 72 education districts.

In the metropolitan provinces of Harare and Bulawayo MoPSE has created some districts that are not part of the administrative divisions.

While most rural districts for education are the same as the administrative districts, there are cases where some administrative districts are amalgamated to form one education district or shared among two education districts. Cases where districts have been shared between 2 districts are Kadoma shared between Mhondoro-Ngezi and Sanyati and Plumtree shared between Bulilima and Mangwe. All urban districts that are wholly contained in a rural district are amalgamated with the rural district to form one education district and some of these are Mutare urban which is part of Mutare education district, Masvingo urban is part of Masvingo education district etc.

Lastly, MoPSE has created districts for Harare and Bulawayo which are not part of the administrative districts. All education districts in Harare and Bulawayo are not digitized as a result for the purposes of data analysis for indicators that require mapping and use census data, Harare districts will be grouped as one called Harare and Bulawayo districts will be treated the same. In each of the 10 provinces there is a provincial education office and a district education office.

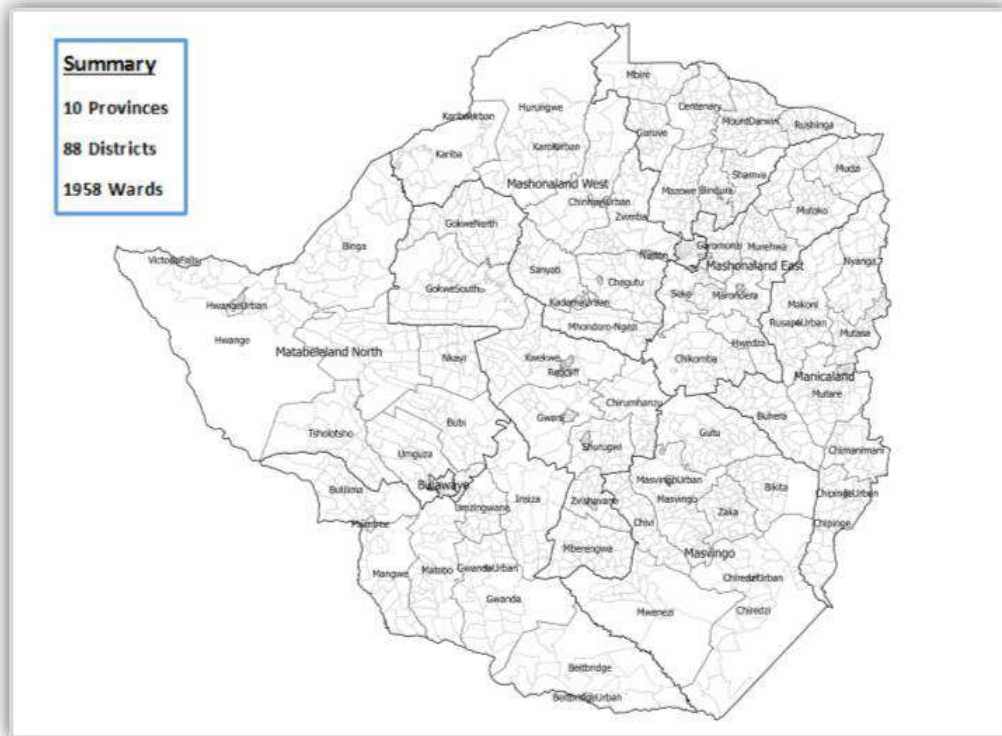


Figure 2: Zimbabwe Administrative Boundaries by Province, Districts and Wards

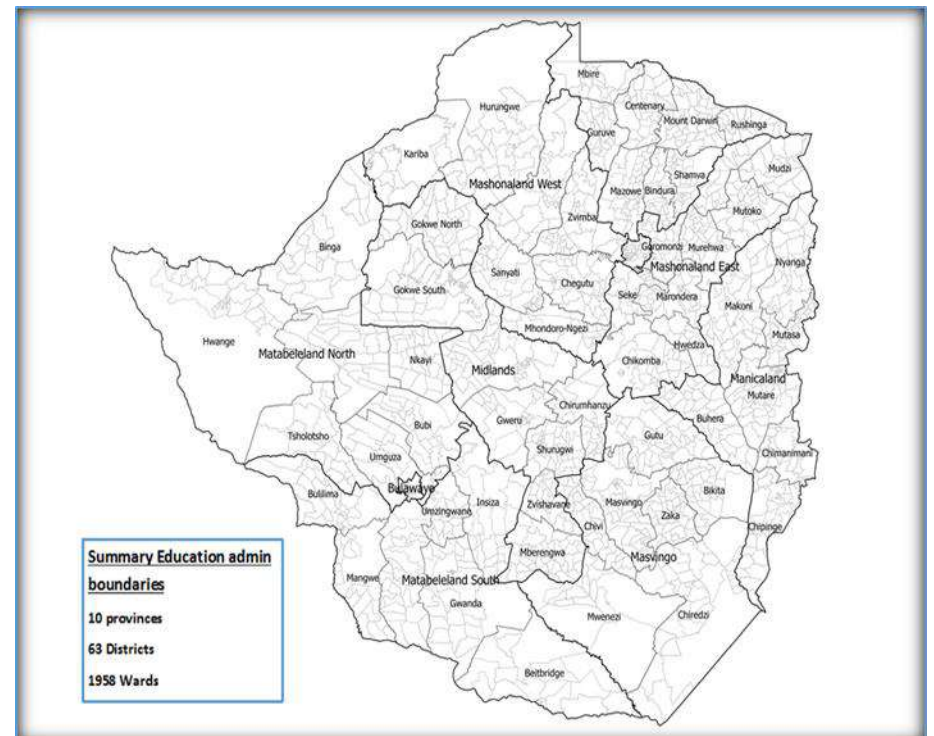


Figure 3: Zimbabwe Ministry of Primary and Secondary Education Administrative Boundaries by Province, Districts and Wards

Chapter 2: Demand for Education

2.1 Population Data

The theoretical target school-age population for primary and secondary education is the subgroup 3-18 years. Population figures shown in the table and figure below were projections done by ZIMSTAT. The data shows a significant deviation of the 12 year age population. Considering that the 12 year age group is used to calculate an important education indicator, the result may not reflect the situation on the ground as a result of this inflated number on the 12 year olds.

According to the population projections in Zimbabwe, school age population was estimated at 5,545,938. Of this population 2,768,933 were males and 2,777,005 were females. The Average Annual Inter-Census Population growth rate was 1.1%.

Table 1: Distribution of Projected School Age Population by Sex

Age	M	F	Grand Total
3	181888	184627	366515
4	192539	191819	384358
5	183515	182503	366017
6	172030	175439	347469
7	180722	180500	361223
8	174137	177466	351603
9	176389	179271	355660
10	173626	174454	348080
11	172660	172422	345082
12	214409	211153	425562
13	166370	167224	333594
14	164590	162974	327564
15	154919	151404	306323
16	155197	154101	309299
17	155979	155775	311755
18	149963	155872	305836
Grand Total	2768933	2777005	5545938

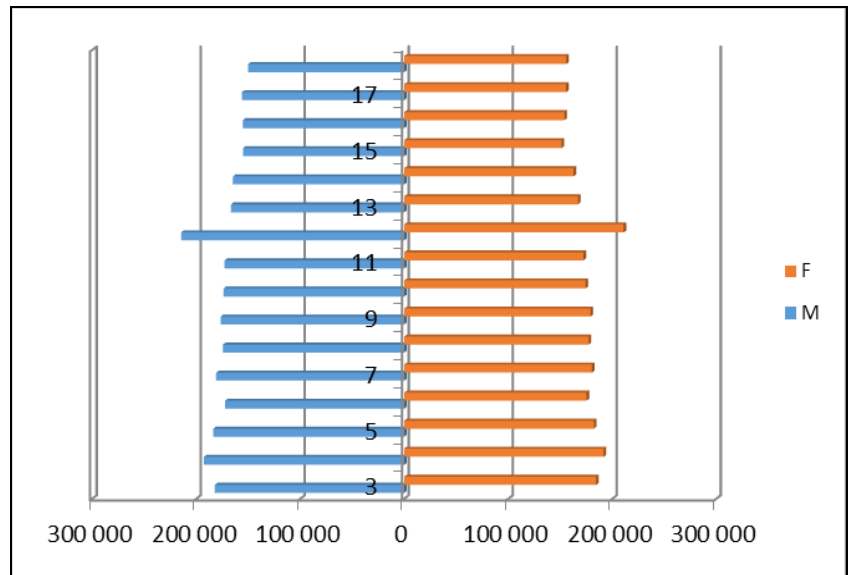


Figure 4: Distribution of School-Age Population by Sex and Age

Table 2: School Age Population by Level and Province

Province	Infant			Junior			Lower Secondary			Upper Secondary			Grand Total 3 - 18 years
	Population age group (3 - 7)			Population age group (8 - 12)			Population age group (13 - 16)			Population age group (17 - 18)			
	Male	Female	Total	Male	Female	Total	Male	Female	Total	Male	Female	Total	
Bulawayo	36661	37891	74552	34959	37404	72363	26881	32527	59407	14942	19838	34780	241103
Harare	120751	123751	244502	108492	116165	224657	77830	93105	170935	40814	56504	97318	737412
Manicaland	131977	132705	264682	132025	131950	263975	93062	88674	181735	42402	39514	81916	792308
Mashonaland Central	83681	83533	167215	83842	83328	167171	58010	53489	111500	27584	24762	52346	498230
Mashonaland East	94746	93507	188254	96509	95390	191899	69441	64013	133454	32515	29213	61728	575334
Mashonaland West	102630	102955	205585	104893	103368	208261	73036	70872	143907	35392	33967	69358	627111
Masvingo	115793	116613	232406	117694	116833	234528	79684	77582	157267	34823	34825	69648	693848
Matabeleland North	57158	56179	113337	59695	58674	118369	41005	38528	79533	19096	17313	36409	347648
Matabeleland South	51739	51352	103091	53544	52599	106143	38616	36046	74663	18684	16651	35335	319232
Midlands	115556	116401	231958	119568	119055	238623	83510	80868	164378	39691	39061	78752	713711
Grand Total	910694	914887	1825581	911220	914767	1825987	641076	635703	1276780	305943	311648	617590	5545938

Table 3: Percentage of School-Age Population Distribution by Level and Gender

Province	Infant			Junior			Lower Secondary			Upper Secondary			Grand Total 3 - 18 years
	Population age group (3 - 7)			Population age group (8 - 12)			Population age group (13 - 16)			Population age group (17 - 18)			
	M	F	T	M	F	T	M	F	T	M	F	T	
Bulawayo	4.03%	4.14%	4.08%	3.84%	4.09%	3.96%	4.19%	5.12%	4.65%	4.88%	6.37%	5.63%	4.35%
Harare	13.26%	13.53%	13.39%	11.91%	12.70%	12.30%	12.14%	14.65%	13.39%	13.34%	18.13%	15.76%	13.30%
Manicaland	14.49%	14.51%	14.50%	14.49%	14.42%	14.46%	14.52%	13.95%	14.23%	13.86%	12.68%	13.26%	14.29%
Mashonaland Central	9.19%	9.13%	9.16%	9.20%	9.11%	9.16%	9.05%	8.41%	8.73%	9.02%	7.95%	8.48%	8.98%
Mashonaland East	10.40%	10.22%	10.31%	10.59%	10.43%	10.51%	10.83%	10.07%	10.45%	10.63%	9.37%	9.99%	10.37%
Mashonaland West	11.27%	11.25%	11.26%	11.51%	11.30%	11.41%	11.39%	11.15%	11.27%	11.57%	10.90%	11.23%	11.31%
Masvingo	12.71%	12.75%	12.73%	12.92%	12.77%	12.84%	12.43%	12.20%	12.32%	11.38%	11.17%	11.28%	12.51%
Matabeleland North	6.28%	6.14%	6.21%	6.55%	6.41%	6.48%	6.40%	6.06%	6.23%	6.24%	5.56%	5.90%	6.27%
Matabeleland South	5.68%	5.61%	5.65%	5.88%	5.75%	5.81%	6.02%	5.67%	5.85%	6.11%	5.34%	5.72%	5.76%
Midlands	12.69%	12.72%	12.71%	13.12%	13.01%	13.07%	13.03%	12.72%	12.87%	12.97%	12.53%	12.75%	12.87%
Grand Total	100.00%	100.00%	100.00%	100.00%	100.00%	100.00%	100.00%	100.00%	100.00%	100.00%	100.00%	100.00%	100.00%

2.2 Schools

Table 4: Number of Schools by Level and Year

Years	ECD		Primary		Secondary	
	ECD	% increase	Primary	% increase	Secondary	% increase
2012	5625	9.99%	5753	1.90%	2312	3.35%
2013	5669	0.78%	5805	0.90%	2374	2.68%
2014	5822	2.70%	5863	1.00%	2424	2.11%
2015	5889	1.15%	5933	1.19%	2718	12.13%
2016	5981	1.56%	6045	1.89%	2775	2.10%
2017	6071	1.50%	6123	1.29%	2830	1.98%

Table 5: Distribution of Schools by Province and Level

Province	Number of Schools			% Distribution		
	Primary	Secondary	Total	Primary	Secondary	Total
Bulawayo	152	80	232	2.48%	2.83%	2.59%
Harare	253	232	485	4.13%	8.20%	5.42%
Manicaland	877	436	1313	14.32%	15.41%	14.67%
Mashonaland Central	508	245	753	8.30%	8.66%	8.41%
Mashonaland East	744	372	1116	12.15%	13.14%	12.47%
Mashonaland West	751	379	1130	12.27%	13.39%	12.62%
Masvingo	870	354	1224	14.21%	12.51%	13.67%
Matabeleland North	616	198	814	10.06%	7.00%	9.09%
Matabeleland South	512	162	674	8.36%	5.72%	7.53%
Midlands	840	372	1212	13.72%	13.14%	13.54%
Grand Total	6123	2830	8953	100.00%	100.00%	100.00%

Table 6: Distribution of Schools by Level and Province

Province	Primary				Secondary			Grand Total
	ECD only	Primary	ECD and Primary	Total	"O" Level	"A" Level	Total	
Bulawayo	17	5	130	152	16	64	80	232
Harare	20	9	224	253	68	165	233	486
Manicaland	4	6	867	877	272	164	436	1313
Mashonaland Central	2	5	501	508	188	57	245	753
Mashonaland East	40	4	700	744	290	82	372	1116
Mashonaland West	6	5	740	751	286	92	378	1129
Masvingo	3	7	860	870	202	152	354	1224
Matabeleland North	21	3	592	616	151	47	198	814
Matabeleland South	3	6	503	512	96	66	162	674
Midlands	35	2	803	840	265	107	372	1212
Grand Total	151	52	5920	6123	1834	996	2830	8953

2.3 Classification of Schools

2.3.1 Registration Status

Table 7: Number of Schools by Level, Registration Status and Province

Province	Primary				Secondary			
	Registered	Satellite	Total	% Satellite, Primary	Registered	Satellite	Total	% Satellite, Secondary
Bulawayo	147	5	152	3.29%	76	4	80	5.00%
Harare	249	4	253	1.58%	227	5	232	2.16%
Manicaland	805	72	877	8.21%	302	134	436	30.73%
Mashonaland Central	400	108	508	21.26%	147	98	245	40.00%
Mashonaland East	656	88	744	11.83%	267	105	372	28.23%
Mashonaland West	515	236	751	31.42%	198	181	379	47.76%
Masvingo	697	173	870	19.89%	260	94	354	26.55%
Matabeleland North	484	132	616	21.43%	121	77	198	38.89%
Matabeleland South	445	67	512	13.09%	123	39	162	24.07%
Midlands	709	131	840	15.60%	270	102	372	27.42%
Grand Total	5107	1016	6123	16.59%	1991	839	2830	29.65%

2.3.2 Distribution of Schools by Location

Province	Primary				Secondary				Grand Total
	Rural	Urban	Total	% Rural	Rural	Urban	Total	% Rural	
Bulawayo	16	136	152	10.53%	7	73	80	8.75%	232
Harare	5	248	253	1.98%	2	230	232	0.86%	485
Manicaland	815	62	877	92.93%	392	44	436	89.91%	1313
Mashonaland Central	470	38	508	92.52%	226	19	245	92.24%	753
Mashonaland East	692	52	744	93.01%	346	26	372	93.01%	1116
Mashonaland West	646	105	751	86.02%	316	63	379	83.38%	1130
Masvingo	840	30	870	96.55%	334	20	354	94.35%	1224
Matabeleland North	567	49	616	92.05%	184	14	198	92.93%	814
Matabeleland South	488	24	512	95.31%	151	11	162	93.21%	674
Midlands	733	107	840	87.26%	308	64	372	82.80%	1212
Grand Total	5272	851	6123	86.10%	2266	564	2830	80.07%	8953

2.3.3 Classification of Schools by Capitation Grant Type

Table 8: Distribution of Schools by Grant Classification and Level

Province	Primary				Secondary				Grand Total
	P1	P2	P3	T	S1	S2	S3	T	
Bulawayo	33	88	31	152	34	35	11	80	232
Harare	77	158	18	253	68	130	34	232	485
Manicaland	13	28	836	877	19	23	394	436	1313
Mashonaland Central	9	18	481	508	8	12	225	245	753
Mashonaland East	15	31	698	744	15	24	333	372	1116
Mashonaland West	25	56	670	751	19	35	325	379	1130
Masvingo	6	19	845	870	6	22	326	354	1224
Matabeleland North	13	15	588	616	6	8	184	198	814
Matabeleland South	8	8	496	512	6	9	147	162	674
Midlands	35	65	740	840	24	38	310	372	1212
Grand Total	234	486	5403	6123	205	336	2289	2830	8953

2.3.4 Government or Non-Government

Table 9: Distribution of Primary Schools by Province and Responsible Authority

Province	Government						Non- Government							Grand Total
	Central Government	Other Government Line Ministries	City Council	District Council	Town Board	Total	Church/ Mission	Mine	Private Company	Farm	Other	Trust	Total	
Bulawayo	63	12	31	7		113	14		9		7	9	39	152
Harare	118	12	28	4	4	166	24	1	23	6	13	20	87	253
Manicaland	49	5	12	653	2	721	97		30	18	5	6	156	877
Mashonaland Central	27	1	5	427		460	17	6	7	11	5	2	48	508
Mashonaland East	11	2	4	612	4	633	31	1	47	13	10	9	111	744
Mashonaland West	47	8	23	601	4	683	28	5	16	7	8	4	68	751
Masvingo	22	4	4	741		771	60	4	23	9	1	2	99	870
Matabeleland North	20	4	4	506	2	536	49	7	10	2	6	6	80	616
Matabeleland South	20	1	1	443	2	467	32		4	8		1	45	512
Midlands	58	4	14	633	1	710	61	13	27	8	13	8	130	840
Grand Total	435	53	126	4627	19	5260	413	37	196	82	68	67	863	6123

Table 10: Distribution of Secondary Schools by Province and Responsible Authority

Province	Government						Non- Government							Grand Total
	Central Government	Other Government Line Ministries	City Council	District Council	Town Board	Total	Church/ Mission	Mine	Private Company	Farm	Other	Trust	Total	
Bulawayo	34	1	1	2		38	12		19		5	6	42	80
Harare	62	6			4	72	17		65		59	19	160	232
Manicaland	22	1	2	284		309	85		12	3	26	1	127	436
Mashonaland Central	15	1	2	194		212	21		8	1	3		33	245
Mashonaland East	15		2	292	2	311	31	1	15	3	9	2	61	372
Mashonaland West	24	4	4	283	1	316	28	2	13	1	16	3	63	379
Masvingo	18			263		281	51		12	1	5	4	73	354
Matabeleland North	16	1		148	1	166	25		1	1	4	1	32	198
Matabeleland South	12			121	2	135	23	1	1			2	27	162
Midlands	33	3	5	260		301	37	2	18	1	9	4	71	372
Grand Total	251	17	16	1847	10	2141	330	6	164	11	136	42	689	2830

2.3.5 Responsible Authority

Table 11: Distribution of Schools by Responsible Authority

Responsible Authority	Number of Schools			Percentage of Total		
	Primary	Secondary	Grand Total	Primary	Secondary	Grand Total
Church/Mission	413	330	743	6.75%	11.66%	8.30%
City Council	126	16	142	2.06%	0.57%	1.59%
District Council	4627	1847	6474	75.57%	65.27%	72.31%
Farm	82	11	93	1.34%	0.39%	1.04%
Government	435	251	686	7.10%	8.87%	7.66%
Mine	37	6	43	0.60%	0.21%	0.48%
Other	68	136	204	1.11%	4.81%	2.28%
Other Government Line Ministries	53	17	70	0.87%	0.60%	0.78%
Private Company	196	164	360	3.20%	5.80%	4.02%
Town Board	19	10	29	0.31%	0.35%	0.32%
Trust	67	42	109	1.09%	1.48%	1.22%
Grand Total	6123	2830	8953	100.00%	100.00%	100.00%

Chapter 3: Access to Education

3.1 New Entrants into Grade 1

Table 12: New Entrants into Grade 1, 2012-2017

	M	F	Total	% Change
2012	215718	207289	423007	-
2013	206235	198970	405205	0.96%
2014	208184	200924	409108	0.96%
2015	211132	202656	413788	1.14%
2016	215909	209005	424914	2.69%
2017	225079	221206	446285	5.03%

Table 13: New Entrants into Grade 1 by Age and Sex

	M	F	Grand Total	% of Total
5 years	3007	3340	6347	1.42%
6 years	61490	67368	128858	28.87%
7 years	110758	108965	219723	49.23%
8 years	36080	31095	67175	15.05%
9 years	9732	7540	17272	3.87%
10 years	2784	2102	4886	1.09%
11 years	759	511	1270	0.28%
12 years	345	199	544	0.12%
Above 12	124	86	210	0.05%
Grand Total	225079	221206	446285	100.00%

Table 14: New Entrants into Grade 1 by Age, Location and Sex

Age	Rural				Urban				Grand Total
	M	F	T	% Rural	M	F	T	% Urban	
5 years	2357	2769	5126	1.52%	650	571	1221	1.12%	6347
6 years	41309	45330	86639	25.70%	20181	22038	42219	38.68%	128858
7 years	82818	82288	165106	48.97%	27940	26677	54617	50.04%	219723
8 years	31345	26839	58184	17.26%	4735	4256	8991	8.24%	67175
9 years	8897	6876	15773	4.68%	835	664	1499	1.37%	17272
10 years	2615	1932	4547	1.35%	169	170	339	0.31%	4886
11 years	672	454	1126	0.33%	87	57	144	0.13%	1270
12 years	322	181	503	0.15%	23	18	41	0.04%	544
Above 12	82	58	140	0.04%	42	28	70	0.06%	210
Grand Total	170417	166727	337144	100.00%	54662	54479	109141	100.00%	446285

3.2 New Entrants into Form 1

Table 15: New Entrants into Form 1 by Age and Sex

Age	M	F	Grand Total	% Total
Below 13	3555	5229	8784	3.35%
13 years	30893	41192	72085	27.51%
14 years	47680	52155	99835	38.09%
15 years	29753	24832	54585	20.83%
16 years	12225	7444	19669	7.51%
17 years	3979	1746	5725	2.18%
18 years	827	295	1122	0.43%
above 18	216	49	265	0.10%
Grand Total	129128	132942	262070	100.00%

Table 16: New Entrants into Form 1 by Age, Location and Sex

	Rural				Urban				Grand Total
	M	F	T	% Rural	M	F	T	% Urban	
Below 13	2534	3831	6365	3.24%	1021	1398	2419	3.70%	8784
13 years	19960	28046	48006	24.41%	10933	13146	24079	36.81%	72085
14 years	34968	38813	73781	37.52%	12712	13342	26054	39.83%	99835
15 years	24623	20536	45159	22.96%	5130	4296	9426	14.41%	54585
16 years	10599	6390	16989	8.64%	1626	1054	2680	4.10%	19669
17 years	3640	1493	5133	2.61%	339	253	592	0.91%	5725
18 years	741	249	990	0.50%	86	46	132	0.20%	1122
above 18	198	38	236	0.12%	18	11	29	0.04%	265
Grand Total	97263	99396	196659	100.00%	31865	33546	65411	100.00%	262070

3.3 ECD Enrolment

Table 17: ECD Enrolment Trend by Sex, 2012-2017

	Male	Female	Total	% Female	% Change
2012	175443	177503	352946	50.29%	-
2013	185557	188568	374125	50.40%	6.00%
2014	214300	213526	427826	49.91%	14.35%
2015	259310	258640	517950	49.94%	21.07%
2016	290595	289770	580365	49.93%	12.05%
2017	313300	310681	623981	49.79%	7.52%

Table 18: ECD Enrolment by Grant Classification by Sex

Grant Class	M	F	Grand Total	% F	% T
P1	12037	12315	24352	50.57%	3.90%
P2	34616	33816	68432	49.42%	10.97%
P3	266647	264550	531197	49.80%	85.13%
Grand Total	313300	310681	623981	49.79%	100.00%

Table 19: ECD Enrolments by Registration Status and Sex

Registration Status	ECD A					ECD B					Grand Total
	M	F	T	% F	% T	M	F	T	% F	% T	
Registered	122745	122473	245218	49.94%	87.96%	154296	151821	306117	49.60%	88.68%	551335
Satellite	16621	16957	33578	50.50%	12.04%	19638	19430	39068	49.73%	11.32%	72646
Grand Total	139366	139430	278796	50.01%	100.00%	173934	171251	345185	49.61%	100.00%	623981

Table 20: ECD Enrolments by Age and Sex

Ages	ECD A			ECD B			Grand Total
	M	F	T	M	F	T	
Below 3 years	645	674	1319	11	5	16	1335
3 years	9663	10361	20024	380	359	739	20763
4 years	46850	49069	95919	4696	4831	9527	105446
5 years	57968	57039	115007	57336	58789	116125	231132
6 years	19865	18464	38329	83283	82005	165288	203617
7 years	3617	3213	6830	23416	21066	44482	51312
8 years	558	454	1012	3731	3235	6966	7978
9 years	141	117	258	790	760	1550	1808
10 years	36	31	67	199	149	348	415
11 years	11	5	16	59	31	90	106
12 years	3	3	6	28	11	39	45
Above 12	9	0	9	5	10	15	24
Grand Total	139366	139430	278796	173934	171251	345185	623981

Table 21: ECD Enrolments by Province and Sex

Province	ECD A			ECD B			Grand Total	% Total
	M	F	T	M	F	T		
Bulawayo	3433	3438	6871	5457	5594	11051	17922	2.87%
Harare	4852	4584	9436	11943	11378	23321	32757	5.25%
Manicaland	25430	25448	50878	29455	28936	58391	109269	17.51%
Mashonaland Central	13654	13856	27510	17277	17158	34435	61945	9.93%
Mashonaland East	15873	15585	31458	19637	19372	39009	70467	11.29%
Mashonaland West	16174	16277	32451	19894	19618	39512	71963	11.53%
Masvingo	21530	21136	42666	25943	25308	51251	93917	15.05%
Matabeleland North	9997	10241	20238	11301	11257	22558	42796	6.86%
Matabeleland South	9705	9713	19418	10726	10642	21368	40786	6.54%
Midlands	18718	19152	37870	22301	21988	44289	82159	13.17%
Grand Total	139366	139430	278796	173934	171251	345185	623981	100.00%

Table 22: ECD Enrolments by Location and Sex

Location	ECD A			ECD B			Grand Total
	M	F	T	M	F	T	
Rural	118930	119170	238100	139260	136988	276248	514348
Urban	20436	20260	40696	34674	34263	68937	109633
Grand Total	139366	139430	278796	173934	171251	345185	623981

3.4 Primary School Enrolment

Table 23: Primary School Enrolment Trend, 2012-2017

	M	F	Total, No.	% F	% Change
2012	1344958	1321493	2666451	49.56	-
2013	1344909	1318278	2663187	49.5	-0.12
2014	1344234	1314456	2658690	49.44	-0.17
2015	1344626	1313789	2658415	49.42	-0.01
2016	1344538	1317472	2662010	49.49	0.14
2017	1346591	1329894	2676485	49.69%	0.54%

Table 24: Primary School Enrolments by Sex and Grade

Grade	M	F	Grand Total	% F	% T
Grade 1	227688	223201	450889	49.50%	16.85%
Grade 2	204941	201142	406083	49.53%	15.17%
Grade 3	194937	190518	385455	49.43%	14.40%
Grade 4	186836	184584	371420	49.70%	13.88%
Grade 5	180600	177828	358428	49.61%	13.39%
Grade 6	178655	179493	358148	50.12%	13.38%
Grade 7	167628	169322	336950	50.25%	12.59%
Skills Orientation	5306	3806	9112	41.77%	0.34%
Grand Total	1346591	1329894	2676485	49.69%	100.00%

Table 25: Primary School Enrolment by Location, Sex and Grade

Grade	Rural			Urban			Grand Total
	M	F	T	M	F	T	
Grade 1	173026	168754	341780	54662	54447	109109	450889
Grade 2	154689	150525	305214	50252	50617	100869	406083
Grade 3	147916	143488	291404	47021	47030	94051	385455
Grade 4	141762	138878	280640	45074	45706	90780	371420
Grade 5	136936	133665	270601	43664	44163	87827	358428
Grade 6	135215	134581	269796	43440	44912	88352	358148
Grade 7	125880	125925	251805	41748	43397	85145	336950
Skills Orientation	3279	2436	5715	2027	1370	3397	9112
Grand Total	1018703	998252	2016955	327888	331642	659530	2676485

Table 26: Primary School Enrolment by Type, Sex and Grade

Grade	P1			P2			P3			Grand Total
	M	F	T	M	F	T	M	F	T	
Grade 1	10487	10562	21049	37939	37679	75618	179262	174960	354222	450889
Grade 2	9761	10314	20075	34904	34684	69588	160276	156144	316420	406083
Grade 3	9154	9450	18604	32554	32322	64876	153229	148746	301975	385455
Grade 4	8902	9260	18162	31298	31423	62721	146636	143901	290537	371420
Grade 5	8687	9027	17714	30221	30607	60828	141692	138194	279886	358428
Grade 6	8419	9226	17645	30573	31385	61958	139663	138882	278545	358148
Grade 7	8082	8736	16818	29497	30588	60085	130049	129998	260047	336950
Skills Orientation	516	353	869	1331	862	2193	3459	2591	6050	9112
Grand Total	64008	66928	130936	228317	229550	457867	1054266	1033416	2087682	2676485

Table 27: Primary School Enrolment by School Registration Status, Sex and Grade

Grade	Registered			Satellite			Grand Total
	M	F	T	M	F	T	
Grade 1	202476	198542	401018	25212	24659	49871	450889
Grade 2	182480	179153	361633	22461	21989	44450	406083
Grade 3	174316	169896	344212	20621	20622	41243	385455
Grade 4	167361	165331	332692	19475	19253	38728	371420
Grade 5	162597	159894	322491	18003	17934	35937	358428
Grade 6	161262	162421	323683	17393	17072	34465	358148
Grade 7	152705	154230	306935	14923	15092	30015	336950
Skills Orientation	5229	3728	8957	77	78	155	9112
Grand Total	1208426	1193195	2401621	138165	136699	274864	2676485

Table 28: Primary School Enrolment by Age and Grade

Ages	Grade 1	Grade 2	Grade 3	Grade 4	Grade 5	Grade 6	Grade 7	Skills Orientation	Grand Total
5 years	7620	0	0	0	0	0	0	160	7780
6 years	134888	8253	0	0	0	0	0	209	143350
7 years	222190	121036	7230	0	0	0	0	285	350741
8 years	62940	178999	102108	9513	0	0	0	426	353986
9 years	16723	69318	168687	98915	10185	0	0	930	364758
10 years	4676	21040	73884	154156	93778	10315	0	1611	359460
11 years	1108	4998	23230	71742	142618	95006	11192	1551	351445
12 years	518	1706	7258	26447	75531	146152	95149	1516	354277
Above 12	226	733	3058	10647	36316	106675	230609	2424	390688
Grand Total	450889	406083	385455	371420	358428	358148	336950	9112	2676485

Table 29: Primary School Enrolments by Province and Grade

Province	Grade 1	Grade 2	Grade 3	Grade 4	Grade 5	Grade 6	Grade 7	Skills Orientation	Grand Total
Bulawayo	17154	16639	15285	14900	14395	14370	13925	731	107399
Harare	43632	40695	38138	36805	35976	36335	35231	1375	268187
Manicaland	73097	64121	63097	57477	55271	54903	50788	551	419305
Mashonaland Central	41507	37489	35432	35393	33201	32804	30267	1046	247139
Mashonaland East	49826	43125	40797	39676	39067	39474	37930	1452	291347
Mashonaland West	52646	47942	44483	43149	42042	42698	41002	1240	315202
Masvingo	61906	54949	52644	50001	47440	46994	43299	562	357795
Matabeleland North	27435	25898	24120	23969	23408	24110	22089	964	171993
Matabeleland South	23397	22063	21335	20827	20245	19600	18834	94	146395
Midlands	60289	53162	50124	49223	47383	46860	43585	1097	351723
Grand Total	450889	406083	385455	371420	358428	358148	336950	9112	2676485

3.5 Secondary School Enrolment

Table 30: Secondary School Enrolment Trend, 2012-2017

Year	Form 1-Form 4					Form 5-Form 6					Form 1- Form 6				
	M	F	T	% F	% change	M	F	T	% F	% Change	M	F	T	% F	% change
2012	438393	433164	871557	49.7	7.28	36434	28743	65177	44.1	41.51	474924	461810	936734	49.3	9.11
2013	445192	445192	890383	50	2.16	37295	29783	67078	44.4	2.92	482560	474901	957461	49.6	2.21
2014	455657	455657	911314	50	2.35	38880	29450	68330	43.1	1.87	493741	485903	979644	49.6	2.32
2015	475902	472646	948548	50	4.09	43546	34890	78436	44.5	14.79	519448	507536	1026984	49.4	4.83
2016	491843	485860	977703	49.69%	3.07%	47923	39178	87101	44.98%	11.05%	539766	525038	1064804	49.31%	3.68%
2017	491488	489900	981388	49.92%	0.38%	50358	43579	93937	46.39%	7.85%	541846	533479	1075325	49.61%	0.99%

Table 31: Secondary School Enrolments by Sex and Form

Grade	M	F	Grand Total	% F	%T
Form 1	130938	134880	265818	50.74%	24.72%
Form 2	127385	129380	256765	50.39%	23.88%
Form 3	123493	119160	242653	49.11%	22.57%
Form 4	109088	106101	215189	49.31%	20.01%
Lower 6	25391	22796	48187	47.31%	4.48%
Upper 6	24967	20783	45750	45.43%	4.25%
Skills Orientation	584	379	963	39.36%	0.09%
Grand Total	541846	533479	1075325	49.61%	100.00%

Table 32: Secondary School Enrolment by School Location, Sex and Form

Grade	Rural			Urban			Grand Total
	M	F	T	M	F	T	
Form 1	98385	100473	198858	32553	34407	66960	265818
Form 2	95337	95360	190697	32048	34020	66068	256765
Form 3	90255	84016	174271	33238	35144	68382	242653
Form 4	77287	72625	149912	31801	33476	65277	215189
Lower 6	13730	11402	25132	11661	11394	23055	48187
Upper 6	13646	10295	23941	11321	10488	21809	45750
Skills Orientation	371	259	630	213	120	333	963
Grand Total	389011	374430	763441	152835	159049	311884	1075325

Table 33: Secondary School Enrolments by Grant Classification, Sex and Form

Grade	S1			S2			S3			Grand Total
	M	F	T	M	F	T	M	F	T	
Form 1	9932	9705	19637	25191	27132	52323	95815	98043	193858	265818
Form 2	10170	9970	20140	24727	27015	51742	92488	92395	184883	256765
Form 3	10007	10124	20131	25459	27092	52551	88027	81944	169971	242653
Form 4	9969	10264	20233	23986	25465	49451	75133	70372	145505	215189
Lower 6	5639	5238	10877	7948	7914	15862	11804	9644	21448	48187
Upper 6	5473	5013	10486	7868	7388	15256	11626	8382	20008	45750
Skills Orientation	112	46	158	107	78	185	365	255	620	963
Grand Total	51302	50360	101662	115286	122084	237370	375258	361035	736293	1075325

Table 34: Secondary School Enrolments by School Registration Status, Sex and Form

Grade	Registered			Satellite			Grand Total		
	M	F	T	M	F	T	M	F	T
Form 1	106925	110490	217415	24013	24390	48403	130938	134880	265818
Form 2	105723	107862	213585	21662	21518	43180	127385	129380	256765
Form 3	104046	101901	205947	19447	17259	36706	123493	119160	242653
Form 4	95104	93254	188358	13984	12847	26831	109088	106101	215189
Lower 6	25303	22715	48018	88	81	169	25391	22796	48187
Upper 6	24883	20727	45610	84	56	140	24967	20783	45750
Skills Orientation	579	376	955	5	3	8	584	379	963
Grand Total	462563	457325	919888	79283	76154	155437	541846	533479	1075325

Table 35: Secondary School Enrolments by Age and Form

Ages	Form 1	Form 2	Form 3	Form 4	Lower 6	Upper 6	Skills Orientation	Grand Total
Below 13	7575	0	0	0	0	0	1	7576
13 years	72808	9089	0	0	0	0	57	81954
14 years	101820	72007	7142	0	0	0	141	181110
15 years	55913	97090	63661	7232	0	0	225	224121
16 years	20284	53180	88227	59430	2620	0	191	223932
17 years	5924	19521	54606	78115	19181	4679	159	182185
18 years	1175	4605	20525	44008	16542	19834	109	106798
above 18	319	1273	8492	26404	9844	21237	80	67649
Grand Total	265818	256765	242653	215189	48187	45750	963	1075325

Table 36: Secondary School Enrolments by Province and Form

Province	Form 1	Form 2	Form 3	Form 4	Lower 6	Upper 6	Skills Orientation	Grand Total	% T
Bulawayo	11892	11953	12384	11920	3598	3577	26	55350	5.15%
Harare	25384	25284	26852	25458	9669	8679	307	121633	11.31%
Manicaland	43205	40727	35726	33310	7397	7430	5	167800	15.60%
Mashonaland Central	22127	21790	19082	16463	2598	2573	1	84634	7.87%
Mashonaland East	32573	31790	30308	26589	4835	4594	18	130707	12.16%
Mashonaland West	30866	30501	27873	23305	3905	3810	0	120260	11.18%
Masvingo	35020	32563	30903	27458	6609	6115	495	139163	12.94%
Matabeleland North	16018	14752	13515	11361	1556	1407	108	58717	5.46%
Matabeleland South	13713	13551	12936	10911	2198	1991	3	55303	5.14%
Midlands	35020	33854	33074	28414	5822	5574	0	141758	13.18%
Grand Total	265818	256765	242653	215189	48187	45750	963	1075325	100.00%

Table 37: Total Enrolment ECD, Primary and Secondary by Sex

Grade	M	F	Grand Total
ECD A	139366	139430	278796
ECD B	173934	171251	345185
Grade 1	227688	223201	450889
Grade 2	204941	201142	406083
Grade 3	194937	190518	385455
Grade 4	186836	184584	371420
Grade 5	180600	177828	358428
Grade 6	178655	179493	358148
Grade 7	167628	169322	336950
Form 1	130938	134880	265818
Form 2	127385	129380	256765
Form 3	123493	119160	242653
Form 4	109088	106101	215189
Lower 6	25391	22796	48187
Upper 6	24967	20783	45750
Skills Orientation	5890	4185	10075
Grand Total	2201737	2174054	4375791

Table 38 Enrolment by Level, Province and Sex

Province	Infant			Junior			Secondary			Grand Total
	M	F	T	M	F	T	M	F	T	
Bulawayo	25602	26113	51715	36381	37225	73606	26320	29030	55350	180671
Harare	59140	57944	117084	91149	92711	183860	59983	61650	121633	422577
Manicaland	124253	122234	246487	142359	139728	282087	87117	80683	167800	696374
Mashonaland Central	70772	70169	140941	84737	83406	168143	44212	40422	84634	393718
Mashonaland East	82279	81139	163418	100509	97887	198396	67463	63244	130707	492521
Mashonaland West	86649	85902	172551	108485	106129	214614	63104	57156	120260	507425
Masvingo	106909	103863	210772	120646	120294	240940	70911	68252	139163	590875
Matabeleland North	48324	47805	96129	59776	58884	118660	27020	31697	58717	273506
Matabeleland South	43378	42868	86246	50904	50031	100935	25556	29747	55303	242484
Midlands	98623	96987	195610	119016	119256	238272	70160	71598	141758	575640
Grand Total	745929	735024	1480953	913962	905551	1819513	541846	533479	1075325	4375791

Chapter 4: Access Rates

Table 39: Apparent and Net Intake Rates Trends for Primary School, 2000-2017

Year	Apparent Intake Rate (AIR)				Net Intake Rate (NIR)			
	Male	Female	Total	GPI AIR	Male	Female	Total	GPI NIR
2012	137.50%	129.20%	133.30%	0.94	48.60%	49.90%	49.30%	1.03
2013	128.30%	120.70%	124.50%	0.94	44.90%	46.10%	45.50%	1.03
2014	124.48%	117.81%	121.11%	0.95	41.21%	42.80%	42.02%	1.04
2015	124.25%	116.95%	120.57%	0.94	35.20%	37.25%	36.23%	1.06
2016	125.56%	119.19%	122.34%	0.95	41.63%	43.08%	42.37%	1.03
2017	130.84%	126.09%	128.44%	0.96	35.74%	38.40%	37.08%	1.07

Table 40: Primary School Apparent Intake Rates by Province and Sex

Province	New Entrants into Grade 1			Population Aged 6			Apparent Intake Rate			GPI
	M	F	Total	M	F	Total	M	F	Total	
Bulawayo	8546	8651	17197	6778	7280	14058	126.09%	118.83%	122.33%	0.94
Harare	21970	21713	43683	22700	23498	46198	96.79%	92.40%	94.56%	0.95
Manicaland	36481	35930	72411	24769	25292	50061	147.28%	142.06%	144.65%	0.96
Mashonaland Central	20655	20373	41028	16082	16141	32223	128.44%	126.22%	127.33%	0.98
Mashonaland East	24460	24407	48867	18049	18209	36258	135.52%	134.04%	134.78%	0.99
Mashonaland West	25997	25695	51692	19306	19697	39003	134.66%	130.45%	132.53%	0.97
Masvingo	31268	30420	61688	21731	22319	44050	143.89%	136.29%	140.04%	0.95
Matabeleland North	13846	13362	27208	10873	10929	21802	127.35%	122.26%	124.80%	0.96
Matabeleland South	11752	11567	23319	9770	9649	19420	120.28%	119.87%	120.08%	1.00
Midlands	30104	29088	59192	21973	22423	44397	137.00%	129.72%	133.33%	0.95
Grand Total	225079	221206	446285	172030	175439	347469	130.84%	126.09%	128.44%	0.96

Table 41: Primary School Net Intake Rates by Province and Sex

Province	New Entrants into Grade 1 aged 6			Population Aged 6			Net Intake Rate			GPI
	M	F	Total	M	F	Total	M	F	Total	
Bulawayo	4141	4436	8577	6778	7280	14058	61.10%	60.93%	61.01%	1.00
Harare	8843	9422	18265	22700	23498	46198	38.96%	40.10%	39.54%	1.03
Manicaland	6160	7001	13161	24769	25292	50061	24.87%	27.68%	26.29%	1.11
Mashonaland Central	4990	5552	10542	16082	16141	32223	31.03%	34.40%	32.72%	1.11
Mashonaland East	5650	6199	11849	18049	18209	36258	31.30%	34.04%	32.68%	1.09
Mashonaland West	6043	6798	12841	19306	19697	39003	31.30%	34.51%	32.92%	1.10
Masvingo	8543	9591	18134	21731	22319	44050	39.31%	42.97%	41.17%	1.09
Matabeleland North	5352	5497	10849	10873	10929	21802	49.22%	50.30%	49.76%	1.02
Matabeleland South	3601	4004	7605	9770	9649	19420	36.86%	41.50%	39.16%	1.13
Midlands	8167	8868	17035	21973	22423	44397	37.17%	39.55%	38.37%	1.06
Grand Total	61490	67368	128858	172030	175439	347469	35.74%	38.40%	37.08%	1.07

4.1 Secondary School Apparent and Net Intake Rates

Table 42: Secondary School Apparent Intake Rate and Net Intake Rate

Year	AIR				NIR			
	Male	Female	Total	GPI	Male	Female	Total	GPI
2012	73.40%	75.80%	74.60%	1.03	20.10%	26.60%	23.40%	1.32
2013	73.10%	76.60%	74.90%	1.05	21.20%	28.30%	24.80%	1.33
2014	74.65%	78.03%	76.34%	1.05	19.15%	25.87%	22.52%	1.35
2015	76.96%	77.78%	77.37%	1.01	16.55%	22.60%	19.58%	1.37
2016	80.64%	81.68%	81.16%	1.01	19.09%	24.62%	21.86%	1.29
2017	77.62%	79.50%	78.56%	1.02	18.57%	24.63%	21.61%	1.33

Table 43: Secondary School Apparent Intake Rate by Province

Province	Population Aged 13			New Entrants			AIR			GPI
	Males	Females	Total	Males	Females	Total	Males	Females	Total	
Bulawayo	6578	7389	13967	5644	5982	11626	85.80%	80.96%	83.24%	0.94
Harare	19782	21826	41608	12181	12788	24969	61.58%	58.59%	60.01%	0.95
Manicaland	24192	23859	48051	21305	21089	42394	88.07%	88.39%	88.23%	1.00
Mashonaland Central	15351	14919	30270	11139	10754	21893	72.56%	72.08%	72.33%	0.99
Mashonaland East	18274	17541	35815	16125	15975	32100	88.24%	91.07%	89.63%	1.03
Mashonaland West	19106	19043	38150	15422	15071	30493	80.72%	79.14%	79.93%	0.98
Masvingo	20953	20605	41558	16883	17726	34609	80.58%	86.03%	83.28%	1.07
Matabeleland North	10746	10587	21332	7261	8466	15727	67.57%	79.97%	73.72%	1.18
Matabeleland South	9987	9650	19637	6315	7186	13501	63.23%	74.46%	68.75%	1.18
Midlands	21401	21804	43205	16853	17905	34758	78.75%	82.12%	80.45%	1.04
Grand Total	166370	167224	333594	129128	132942	262070	77.62%	79.50%	78.56%	1.02

Table 44: Secondary School Net Intake Rate by Province

Province	Population Aged 13			New Entrants into Form 1 Aged 13			NIR			GPI
	Males	Females	Total	Males	Females	Total	Males	Females	Total	
Bulawayo	6578	7389	13967	2284	2594	4878	34.72%	35.11%	34.93%	1.01
Harare	19782	21826	41608	4316	5245	9561	21.82%	24.03%	22.98%	1.10
Manicaland	24192	23859	48051	3821	5242	9063	15.79%	21.97%	18.86%	1.39
Mashonaland Central	15351	14919	30270	2087	2765	4852	13.60%	18.53%	16.03%	1.36
Mashonaland East	18274	17541	35815	3757	5135	8892	20.56%	29.27%	24.83%	1.42
Mashonaland West	19106	19043	38150	3253	4221	7474	17.03%	22.17%	19.59%	1.30
Masvingo	20953	20605	41558	3668	5132	8800	17.51%	24.91%	21.18%	1.42
Matabeleland North	10746	10587	21332	2065	2897	4962	19.22%	27.36%	23.26%	1.42
Matabeleland South	9987	9650	19637	1792	2618	4410	17.94%	27.13%	22.46%	1.51
Midlands	21401	21804	43205	3850	5343	9193	17.99%	24.50%	21.28%	1.36
Grand Total	166370	167224	333594	30893	41192	72085	18.57%	24.63%	21.61%	1.33

Chapter 5: Participation Rates

5.1 ECD Participation Rates

Table 45: Gross Enrolment Ratio and Net Enrolment Ratio Trend, 2012 to 2017

Year	Gross Enrolment Ratio				Net Enrolment Ratio			
	M	F	T	GPI	M	F	T	GPI
2012	32.93%	33.38%	32.87%	1.01	29.54%	30.12%	29.83%	1.02
2013	34.51%	35.01%	34.76%	1.01	22.97%	23.83%	23.40%	1.04
2014	39.50%	39.29%	39.40%	0.99	24.74%	25.21%	24.98%	1.02
2015	47.05%	46.84%	46.94%	1	28.54%	29.36%	28.95%	1.03
2016	52.10%	51.85%	51.98%	1	32.82%	33.32%	33.07%	1.02
2017	56.15%	55.58%	55.87%	0.99	31.70%	32.28%	31.99%	1.02

Table 46: ECD School Age Population and Enrolment

Provinces	Population 3-5 years			Total Enrolment			Enrolment 3-5 years		
	M	F	T	M	F	T	M	F	T
Bulawayo	22941	23309	46251	8890	9032	17922	6131	6525	12656
Harare	75446	76890	152335	16795	15962	32757	10771	10360	21131
Manicaland	81022	81109	162131	54885	54384	109269	28339	29025	57364
Mashonaland Central	50850	50797	101647	30931	31014	61945	16630	17123	33753
Mashonaland East	57740	56740	114480	35510	34957	70467	18572	18624	37196
Mashonaland West	62952	63121	126073	36068	35895	71963	18872	19199	38071
Masvingo	70550	70647	141197	47473	46444	93917	27961	28214	56175
Matabeleland North	34571	33898	68469	21298	21498	42796	14589	15232	29821
Matabeleland South	31723	31645	63367	20431	20355	40786	11754	12035	23789
Midlands	70145	70793	140938	41019	41140	82159	23274	24111	47385
Total	557941	558948	1116889	313300	310681	623981	176893	180448	357341

Table 47: ECD GER, NER and GPI by Sex and Province

Province	GER				NER			
	M	F	Total	GPI	M	F	Total	GPI
Bulawayo	38.75%	38.75%	38.75%	1.00	26.72%	27.99%	27.36%	1.05
Harare	22.26%	20.76%	21.50%	0.93	14.28%	13.47%	13.87%	0.94
Manicaland	67.74%	67.05%	67.40%	0.99	34.98%	35.79%	35.38%	1.02
Mashonaland Central	60.83%	61.05%	60.94%	1.00	32.70%	33.71%	33.21%	1.03
Mashonaland East	61.50%	61.61%	61.55%	1.00	32.16%	32.82%	32.49%	1.02
Mashonaland West	57.29%	56.87%	57.08%	0.99	29.98%	30.42%	30.20%	1.01
Masvingo	67.29%	65.74%	66.51%	0.98	39.63%	39.94%	39.78%	1.01
Matabeleland North	61.61%	63.42%	62.50%	1.03	42.20%	44.93%	43.55%	1.06
Matabeleland South	64.41%	64.32%	64.36%	1.00	37.05%	38.03%	37.54%	1.03
Midlands	58.48%	58.11%	58.29%	0.99	33.18%	34.06%	33.62%	1.03
Grand Total	56.15%	55.58%	55.87%	0.99	31.70%	32.28%	31.99%	1.02

Table 48: ECD A GER, NER and GPI by Sex and Province

Province	GER				NER			
	M	F	Total	GPI	M	F	Total	GPI
Bulawayo	21.94%	21.68%	21.81%	0.99	12.26%	13.07%	12.67%	1.07
Harare	9.36%	8.68%	9.02%	0.93	4.59%	4.37%	4.48%	0.95
Manicaland	46.48%	46.13%	46.30%	0.99	17.49%	18.18%	17.84%	1.04
Mashonaland Central	40.68%	40.77%	40.73%	1.00	15.68%	16.53%	16.11%	1.05
Mashonaland East	41.15%	40.96%	41.06%	1.00	15.22%	16.07%	15.64%	1.06
Mashonaland West	38.57%	38.30%	38.44%	0.99	12.67%	13.50%	13.09%	1.07
Masvingo	45.93%	44.92%	45.42%	0.98	20.40%	20.82%	20.61%	1.02
Matabeleland North	43.22%	45.24%	44.22%	1.05	23.60%	25.96%	24.77%	1.10
Matabeleland South	45.45%	45.93%	45.69%	1.01	16.92%	18.34%	17.63%	1.08
Midlands	40.01%	40.55%	40.28%	1.01	16.18%	16.93%	16.55%	1.05
Grand Total	37.22%	37.04%	37.13%	1.00	15.09%	15.79%	15.44%	1.05

Table 49: ECD B GER, NER and GPI by Sex and Province

Province	GER				NER			
	M	F	Total	GPI	M	F	Total	GPI
Bulawayo	74.78%	75.05%	74.92%	1.00	15.75%	14.56%	15.14%	0.92
Harare	50.61%	47.27%	48.92%	0.93	9.08%	8.50%	8.79%	0.94
Manicaland	111.97%	111.55%	111.76%	1.00	42.42%	42.71%	42.57%	1.01
Mashonaland Central	99.94%	102.08%	100.99%	1.02	32.86%	33.21%	33.03%	1.01
Mashonaland East	102.46%	103.64%	103.04%	1.01	35.77%	35.64%	35.70%	1.00
Mashonaland West	94.65%	95.12%	94.88%	1.00	34.93%	34.58%	34.76%	0.99
Masvingo	109.59%	107.27%	108.44%	0.98	35.87%	35.12%	35.49%	0.98
Matabeleland North	98.78%	99.94%	99.36%	1.01	29.06%	29.20%	29.13%	1.00
Matabeleland South	103.45%	101.36%	102.40%	0.98	38.99%	37.62%	38.30%	0.96
Midlands	95.46%	93.33%	94.39%	0.98	33.31%	33.65%	33.48%	1.01
Grand Total	94.78%	93.83%	94.31%	0.99	31.59%	31.25%	31.42%	0.99

5.2 Primary School Participation Rates

Table 50: Primary School Gross Enrolment Ratio and Net Enrolment Ratio Trend, 2012-2017

Year	Gross Enrolment Ratio				Net Enrolment Ratio			
	Male	Female	Total	GPI	Male	Female	Total	GPI
2012	111.70%	109.10%	110.40%	0.98	95.20%	96.00%	95.60%	1.01
2013	110.50%	107.70%	109.10%	0.98	93.40%	94.00%	93.70%	1.01
2014	109.41%	106.44%	107.92%	0.97	91.89%	92.51%	92.20%	1.01
2015	107.73%	104.69%	106.21%	0.97	88.04%	88.89%	88.46%	1.01
2016	106.44%	103.75%	105.09%	0.97	89.97%	90.06%	90.01%	1
2017	106.54%	104.66%	105.59%	0.98	89.28%	90.46%	89.87%	1.01

Table 51: Primary School Age Population and Enrolments

Provinces	Population 6-12 years			Total Enrolment			Enrolment 6-12 years		
	M	F	T	M	F	T	M	F	T
Bulawayo	48679	51986	100665	53093	54306	107399	47674	49693	97367
Harare	153796	163026	316823	133494	134693	268187	120219	122813	243032
Manicaland	182980	183546	366526	211727	207578	419305	171802	175047	346849
Mashonaland Central	116674	116064	232738	124578	122561	247139	101983	103796	205779
Mashonaland East	133515	132157	265672	147278	144069	291347	122772	123973	246745
Mashonaland West	144571	143202	287773	159066	156136	315202	130663	133070	263733
Masvingo	162937	162799	325736	180082	177713	357795	148785	152029	300814
Matabeleland North	82283	80954	163237	86802	85191	171993	74886	74972	149858
Matabeleland South	73560	72306	145867	73851	72544	146395	63053	63534	126587
Midlands	164979	164664	329643	176620	175103	351723	146610	150504	297114
Total	1263973	1270706	2534679	1346591	1329894	2676485	1128447	1149431	2277878

Table 52: Primary GER, NER and GPI by Sex and Province

Province	GER				NER			
	M	F	Total	GPI	M	F	Total	GPI
Bulawayo	109.07%	104.46%	106.69%	0.96	97.94%	95.59%	96.72%	0.98
Harare	86.80%	82.62%	84.65%	0.95	78.17%	75.33%	76.71%	0.96
Manicaland	115.71%	113.09%	114.40%	0.98	93.89%	95.37%	94.63%	1.02
Mashonaland Central	106.77%	105.60%	106.19%	0.99	87.41%	89.43%	88.42%	1.02
Mashonaland East	110.31%	109.01%	109.66%	0.99	91.95%	93.81%	92.88%	1.02
Mashonaland West	110.03%	109.03%	109.53%	0.99	90.38%	92.92%	91.65%	1.03
Masvingo	110.52%	109.16%	109.84%	0.99	91.31%	93.38%	92.35%	1.02
Matabeleland North	105.49%	105.23%	105.36%	1.00	91.01%	92.61%	91.80%	1.02
Matabeleland South	100.40%	100.33%	100.36%	1.00	85.72%	87.87%	86.78%	1.03
Midlands	107.06%	106.34%	106.70%	0.99	88.87%	91.40%	90.13%	1.03
Grand Total	106.54%	104.66%	105.59%	0.98	89.28%	90.46%	89.87%	1.01

Table 53: Grade Specific Net Enrolment Rate (NER) by Sex and Grade

Grade	Grade-Age Enrolment			Grade-Age Population			Grade NER			
	Male	Female	Total	Male	Female	Total	Male	Female	Total	GPI
Grade 1	64454	70434	134888	172030	175439	347469	37.47%	40.15%	38.82%	1.07
Grade 2	56548	64488	121036	180722	180500	361223	31.29%	35.73%	33.51%	1.14
Grade 3	46786	55322	102108	174137	177466	351603	26.87%	31.17%	29.04%	1.16
Grade 4	44400	54515	98915	176389	179271	355660	25.17%	30.41%	27.81%	1.21
Grade 5	42356	51422	93778	173626	174454	348080	24.39%	29.48%	26.94%	1.21
Grade 6	42179	52827	95006	172660	172422	345082	24.43%	30.64%	27.53%	1.25
Grade 7	42449	52700	95149	214409	211153	425562	19.80%	24.96%	22.36%	1.26

Table 54: Grade Specific Gross Enrolment Ratio by Grade and Sex

Grade	Grade Enrolment			Grade-Age Population			Grade GER			
	Male	Female	Total	Male	Female	Total	Male	Female	Total	GPI
Grade 1	227688	223201	450889	172030	175439	347469	132.35%	127.22%	129.76%	0.96
Grade 2	204941	201142	406083	180722	180500	361223	113.40%	111.44%	112.42%	0.98
Grade 3	194937	190518	385455	174137	177466	351603	111.94%	107.35%	109.63%	0.96
Grade 4	186836	184584	371420	176389	179271	355660	105.92%	102.96%	104.43%	0.97
Grade 5	180600	177828	358428	173626	174454	348080	104.02%	101.93%	102.97%	0.98
Grade 6	178655	179493	358148	172660	172422	345082	103.47%	104.10%	103.79%	1.01
Grade 7	167628	169322	336950	214409	211153	425562	78.18%	80.19%	79.18%	1.03

Table 55: Primary School ASER by Age and Sex

Age	Enrolment			Age Population			ASER			
	M	F	T	M	F	T	M	F	T	GPI
6 years	68554	74950	143504	172030	175439	347469	39.85%	42.72%	41.30%	1.07
7 years	172480	178267	350747	180722	180500	361223	95.44%	98.76%	97.10%	1.03
8 years	175386	178787	354173	174137	177466	351603	100.72%	100.74%	100.73%	1.00
9 years	180197	184689	364886	176389	179271	355660	102.16%	103.02%	102.59%	1.01
10 years	179967	179653	359620	173626	174454	348080	103.65%	102.98%	103.32%	0.99
11 years	174693	175978	350671	172660	172422	345082	101.18%	102.06%	101.62%	1.01
12 years	177170	177107	354277	214409	211153	425562	82.63%	83.88%	83.25%	1.02

Table 56: GER and NER by Province and Sex, Infant Level

	GER				NER			
	M	F	Total	GPI	M	F	Total	GPI
Bulawayo	69.83%	68.92%	69.37%	0.99	57.56%	58.04%	57.81%	1.01
Harare	48.98%	46.82%	47.89%	0.96	39.01%	38.05%	38.53%	0.98
Manicaland	94.15%	92.11%	93.13%	0.98	65.24%	66.31%	65.78%	1.02
Mashonaland Central	84.57%	84.00%	84.29%	0.99	60.20%	61.66%	60.93%	1.02
Mashonaland East	86.84%	86.77%	86.81%	1.00	62.70%	64.94%	63.81%	1.04
Mashonaland West	84.43%	83.44%	83.93%	0.99	60.57%	61.38%	60.98%	1.01
Masvingo	92.33%	89.07%	90.69%	0.96	67.87%	68.32%	68.10%	1.01
Matabeleland North	84.54%	85.09%	84.82%	1.01	67.10%	69.57%	68.33%	1.04
Matabeleland South	83.84%	83.48%	83.66%	1.00	63.58%	65.24%	64.41%	1.03
Midlands	85.35%	83.32%	84.33%	0.98	62.19%	63.16%	62.68%	1.02
Grand Total	81.91%	80.34%	81.12%	0.98	60.17%	61.02%	60.60%	1.01

Table 57: GER and NER by Province and Sex, Junior Level

Provinces	GER				NER			
	M	F	Total	GPI	M	F	Total	GPI
Bulawayo	104.07%	99.52%	101.72%	0.96	88.19%	86.68%	87.41%	0.98
Harare	84.01%	79.81%	81.84%	0.95	71.66%	69.55%	70.57%	0.97
Manicaland	107.83%	105.89%	106.86%	0.98	77.83%	81.45%	79.64%	1.05
Mashonaland Central	101.07%	100.09%	100.58%	0.99	74.30%	77.69%	75.99%	1.05
Mashonaland East	104.14%	102.62%	103.39%	0.99	78.60%	81.40%	79.99%	1.04
Mashonaland West	103.42%	102.67%	103.05%	0.99	76.45%	80.39%	78.40%	1.05
Masvingo	102.51%	102.96%	102.73%	1.00	76.05%	81.04%	78.53%	1.07
Matabeleland North	100.14%	100.36%	100.25%	1.00	80.13%	82.98%	81.54%	1.04
Matabeleland South	95.07%	95.12%	95.09%	1.00	74.96%	77.95%	76.44%	1.04
Midlands	99.54%	100.17%	99.85%	1.01	74.58%	79.59%	77.08%	1.07
Grand Total	100.30%	98.99%	99.65%	0.99	76.41%	79.29%	77.85%	1.04

5.3 Secondary School Participation Rates

Table 58: Secondary School Gross Enrolment Rate (GER) by Sex, 2012-2017

Year	Form 1 to 4 GER				Form 5 to 6 GER				Form 1 to 6 GER			
	Male	Female	Total	GPI	Male	Female	Total	GPI	Male	Female	Total	GPI
2012	71.50%	71.20%	71.40%	1	12.50%	9.70%	11.10%	0.78	52.60%	51.20%	51.90%	0.97
2013	71.50%	72.10%	71.80%	1.01	12.60%	9.80%	11.20%	0.78	52.60%	51.70%	52.10%	0.98
2014	73.15%	73.73%	73.44%	1.01	12.88%	9.91%	11.38%	0.77	53.68%	52.74%	53.21%	0.98
2015	75.06%	75.20%	75.13%	1	14.41%	11.34%	12.86%	0.79	55.47%	54.19%	54.83%	0.98
2016	76.78%	76.49%	76.63%	1	15.68%	12.58%	14.11%	0.8	57.04%	55.46%	56.25%	0.97
2017	72.48%	74.31%	73.39%	1.03	16.46%	13.98%	15.21%	0.85	57.22%	56.31%	56.76%	0.98

Table 59: Secondary School Net Enrolment Rate, 2012-2017

Year	Form 1 to 4 NER				Form 5 to 6				Form 1 to 6			
	Male	Female	Total	GPI	Male	Female	Total	GPI	Male	Female	Total	GPI
2012	49.10%	54.80%	51.90%	1.12	6.90%	6.30%	6.60%	0.92	52.20%	50.50%	51.30%	0.97
2013	49.80%	55.90%	52.80%	1.12	7.30%	6.60%	6.90%	0.91	52.10%	50.90%	51.50%	0.98
2014	50.81%	56.66%	53.73%	1.12	7.62%	6.82%	7.21%	0.90	49.16%	49.98%	49.57%	1.02
2015	51.05%	57.25%	54.13%	1.12	8.27%	7.75%	8.01%	0.94	50.36%	51.13%	50.74%	1.02
2016	53.96%	58.89%	56.41%	1.09	9.56%	8.84%	9.20%	0.92	52.41%	52.53%	52.47%	1
2017	52.44%	58.54%	55.48%	1.12	9.79%	9.66%	9.73%	0.99	52.36%	53.21%	52.78%	1.02

Table 60: Secondary School-Age Population and Enrolment by Sex, Form 1-4

Province	Population 13-16 years			Total Enrolment form 1-4			Enrolment 13-16 years		
	M	F	Total	M	F	Total	M	F	Total
Bulawayo	26881	32527	59407	22947	25228	48175	17639	20358	37997
Harare	77830	93105	170935	50457	52828	103285	38944	42678	81622
Manicaland	93062	88674	181735	78938	74035	152973	50504	54436	104940
Mashonaland Central	58010	53489	111500	41274	38189	79463	26980	28575	55555
Mashonaland East	69441	64013	133454	62524	58754	121278	43592	45797	89389
Mashonaland West	73036	70872	143907	58681	53864	112545	39207	40804	80011
Masvingo	79684	77582	157267	63635	62804	126439	41410	46476	87886
Matabeleland North	41005	38528	79533	25581	30173	55754	17875	22677	40552
Matabeleland South	38616	36046	74663	23517	27597	51114	17467	21685	39152
Midlands	83510	80868	164378	63934	66428	130362	42567	48626	91193
Grand Total	641076	635703	1276780	491488	489900	981388	336185	372112	708297

Table 61: Secondary Form 1-4 NER and GER by Province and Sex

Province	GER				NER			
	M	F	T	GPI	M	F	T	GPI
Bulawayo	85.37%	77.56%	81.09%	0.91	65.62%	62.59%	63.96%	0.95
Harare	64.83%	56.74%	60.42%	0.88	50.04%	45.84%	47.75%	0.92
Manicaland	84.82%	83.49%	84.17%	0.98	54.27%	61.39%	57.74%	1.13
Mashonaland Central	71.15%	71.40%	71.27%	1.00	46.51%	53.42%	49.83%	1.15
Mashonaland East	90.04%	91.78%	90.88%	1.02	62.78%	71.54%	66.98%	1.14
Mashonaland West	80.35%	76.00%	78.21%	0.95	53.68%	57.57%	55.60%	1.07
Masvingo	79.86%	80.95%	80.40%	1.01	51.97%	59.91%	55.88%	1.15
Matabeleland North	62.38%	78.31%	70.10%	1.26	43.59%	58.86%	50.99%	1.35
Matabeleland South	60.90%	76.56%	68.46%	1.26	45.23%	60.16%	52.44%	1.33
Midlands	76.56%	82.14%	79.31%	1.07	50.97%	60.13%	55.48%	1.18
Grand Total	76.67%	77.06%	76.86%	1.01	52.44%	58.54%	55.48%	1.12

Table 62: Secondary School Form 5-6 Age Population and Enrolment by Sex

Province	Population 17-18 years			Total Enrolment form 5-6			Enrolment 17-18 years		
	M	F	Total	M	F	Total	M	F	Total
Bulawayo	14942	19838	34780	3373	3802	7175	2196	2771	4967
Harare	40814	56504	97318	9526	8822	18348	6731	6743	13474
Manicaland	42402	39514	81916	8179	6648	14827	4236	4298	8534
Mashonaland Central	27584	24762	52346	2938	2233	5171	1744	1617	3361
Mashonaland East	32515	29213	61728	4939	4490	9429	3372	3426	6798
Mashonaland West	35392	33967	69358	4423	3292	7715	2660	2214	4874
Masvingo	34823	34825	69648	7276	5448	12724	3825	3503	7328
Matabeleland North	19096	17313	36409	1439	1524	2963	753	895	1648
Matabeleland South	18684	16651	35335	2039	2150	4189	1250	1425	2675
Midlands	39691	39061	78752	6226	5170	11396	3193	3227	6420
Grand Total	305943	311648	617590	50358	43579	93937	29960	30119	60079

Table 63: Secondary GER and NER, Form 5-6 by Province and Sex

Province	GER				NER			
	M	F	T	GPI	M	F	T	GPI
Bulawayo	22.57%	19.17%	20.63%	0.85	14.70%	13.97%	14.28%	0.95
Harare	23.34%	15.61%	18.85%	0.67	16.49%	11.93%	13.85%	0.72
Manicaland	19.29%	16.82%	18.10%	0.87	9.99%	10.88%	10.42%	1.09
Mashonaland Central	10.65%	9.02%	9.88%	0.85	6.32%	6.53%	6.42%	1.03
Mashonaland East	15.19%	15.37%	15.28%	1.01	10.37%	11.73%	11.01%	1.13
Mashonaland West	12.50%	9.69%	11.12%	0.78	7.52%	6.52%	7.03%	0.87
Masvingo	20.89%	15.64%	18.27%	0.75	10.98%	10.06%	10.52%	0.92
Matabeleland North	7.54%	8.80%	8.14%	1.17	3.94%	5.17%	4.53%	1.31
Matabeleland South	10.91%	12.91%	11.86%	1.18	6.69%	8.56%	7.57%	1.28
Midlands	15.69%	13.24%	14.47%	0.84	8.04%	8.26%	8.15%	1.03
Grand Total	16.46%	13.98%	15.21%	0.85	9.79%	9.66%	9.73%	0.99

Table 64: Secondary School Form 1-6 Population and Enrolment by Sex and Province

Province	Population 13-18 years			Total Enrolment form 1-6			Enrolment 13-18 years		
	M	F	Total	M	F	Total	M	F	Total
Bulawayo	41823	52364	94187	26320	29030	55350	24529	27360	51889
Harare	118644	149609	268253	59983	61650	121633	55996	58590	114586
Manicaland	135464	128187	263651	87117	80683	167800	78309	75537	153846
Mashonaland Central	85594	78251	163845	44212	40422	84634	40462	38580	79042
Mashonaland East	101956	93226	195182	67463	63244	130707	63028	60791	123819
Mashonaland West	108427	104838	213266	63104	57156	120260	58256	54521	112777
Masvingo	114508	112408	226915	70911	68252	139163	63309	63713	127022
Matabeleland North	60101	55841	115942	27020	31697	58717	24793	29753	54546
Matabeleland South	57300	52698	109998	25556	29747	55303	23857	28213	52070
Midlands	123202	119929	243130	70160	71598	141758	63291	67007	130298
Grand Total	947019	947351	1894370	541846	533479	1075325	495830	504065	999895

Table 65: Secondary Form 1-6 GER and NER by Province and Sex

Province	GER				NER			
	M	F	T	GPI	M	F	T	GPI
Bulawayo	62.93%	55.44%	58.77%	0.88	58.65%	52.25%	55.09%	0.89
Harare	50.56%	41.21%	45.34%	0.82	47.20%	39.16%	42.72%	0.83
Manicaland	64.31%	62.94%	63.64%	0.98	57.81%	58.93%	58.35%	1.02
Mashonaland Central	51.65%	51.66%	51.65%	1.00	47.27%	49.30%	48.24%	1.04
Mashonaland East	66.17%	67.84%	66.97%	1.03	61.82%	65.21%	63.44%	1.05
Mashonaland West	58.20%	54.52%	56.39%	0.94	53.73%	52.00%	52.88%	0.97
Masvingo	61.93%	60.72%	61.33%	0.98	55.29%	56.68%	55.98%	1.03
Matabeleland North	44.96%	56.76%	50.64%	1.26	41.25%	53.28%	47.05%	1.29
Matabeleland South	44.60%	56.45%	50.28%	1.27	41.64%	53.54%	47.34%	1.29
Midlands	56.95%	59.70%	58.31%	1.05	51.37%	55.87%	53.59%	1.09
Grand Total	57.22%	56.31%	56.76%	0.98	52.36%	53.21%	52.78%	1.02

Table 66: Grade Specific Net Enrolment Rate

Form	Grade Age Enrolment			Grade Age Population			Grade NER			
	M	F	T	M	F	T	M	F	T	GPI
Form 1	31170	41638	72808	166370	167224	333594	18.74%	24.90%	21.83%	1.33
Form 2	30943	41064	72007	164590	162974	327564	18.80%	25.20%	21.98%	1.34
Form 3	27845	35816	63661	154919	151404	306323	17.97%	23.66%	20.78%	1.32
Form 4	25753	33677	59430	155197	154101	309299	16.59%	21.85%	19.21%	1.32
Form 5	8892	10289	19181	155979	155775	311755	5.70%	6.61%	6.15%	1.16
Form 6	9918	9916	19834	149963	155872	305836	6.61%	6.36%	6.49%	0.96

Table 67: Grade Specific Gross Enrolment Rate

Form	Grade Age Enrolment			Grade Age Population			Grade GER			
	M	F	T	M	F	T	M	F	T	GPI
Form 1	130938	134880	265818	166370	167224	333594	78.70%	80.66%	79.68%	1.02
Form 2	127385	129380	256765	164590	162974	327564	77.40%	79.39%	78.39%	1.03
Form 3	123493	119160	242653	154919	151404	306323	79.71%	78.70%	79.21%	0.99
Form 4	109088	106101	215189	155197	154101	309299	70.29%	68.85%	69.57%	0.98
Form 5	25391	22796	48187	155979	155775	311755	16.28%	14.63%	15.46%	0.90
Form 6	24967	20783	45750	149963	155872	305836	16.65%	13.33%	14.96%	0.80

Table 68: Secondary School ASER

Year	Age Enrolment			Age Population			ASER			
	M	F	T	M	F	T	M	F	T	GPI
13 years	34908	46928	81836	166370	167224	333594	20.98%	28.06%	24.53%	1.34
14 years	82598	98585	181183	164590	162974	327564	50.18%	60.49%	55.31%	1.21
15 years	108058	115938	223996	154919	151404	306323	69.75%	76.58%	73.12%	1.10
16 years	111848	112206	224054	155197	154101	309299	72.07%	72.81%	72.44%	1.01
17 years	97468	84560	182028	155979	155775	311755	62.49%	54.28%	58.39%	0.87
18 years	60950	45848	106798	149963	155872	305836	40.64%	29.41%	34.92%	0.72

Chapter 6 Equity

6.1 Orphaned and Vulnerable Children (OVC)

Table 69: ECD, Primary Grade 1-7 and Secondary Orphaned and Vulnerable Children (OVC) by Province

Province	ECD			Primary Grade 1-7			Secondary		
	M	F	Total	M	F	Total	M	F	Total
Bulawayo	810	844	1654	9594	9837	19431	6300	7271	13571
Harare	1002	989	1991	16063	13996	30059	11711	12657	24368
Manicaland	9526	9351	18877	51347	50023	101370	26106	25711	51817
Mashonaland Central	5528	5413	10941	28493	28274	56767	14322	14635	28957
Mashonaland East	5660	5550	11210	34041	33988	68029	20106	20025	40131
Mashonaland West	5865	5833	11698	36476	35746	72222	18437	17831	36268
Masvingo	8663	8073	16736	43919	42802	86721	21691	22235	43926
Matabeleland North	4946	4777	9723	25581	25440	51021	9913	11797	21710
Matabeleland South	4146	4108	8254	23943	20884	44827	7924	9972	17896
Midlands	7580	7390	14970	41229	40611	81840	19813	22681	42494
Grand Total	53726	52328	106054	310686	301601	612287	156323	164815	321138

Table 70: ECD, Primary Grade 1-7 and Secondary Percentage of Learners who are OVC

Province	ECD			Primary			Secondary		
	M	F	Total	M	F	Total	M	F	Total
Bulawayo	9.11%	9.34%	9.23%	18.07%	18.11%	18.09%	23.94%	25.05%	24.52%
Harare	5.97%	6.20%	6.08%	12.03%	10.39%	11.21%	19.52%	20.53%	20.03%
Manicaland	17.36%	17.19%	17.28%	24.25%	24.10%	24.18%	29.97%	31.87%	30.88%
Mashonaland Central	17.87%	17.45%	17.66%	22.87%	23.07%	22.97%	32.39%	36.21%	34.21%
Mashonaland East	15.94%	15.88%	15.91%	23.11%	23.59%	23.35%	29.80%	31.66%	30.70%
Mashonaland West	16.26%	16.25%	16.26%	22.93%	22.89%	22.91%	29.22%	31.20%	30.16%
Masvingo	18.25%	17.38%	17.82%	24.39%	24.08%	24.24%	30.59%	32.58%	31.56%
Matabeleland North	23.22%	22.22%	22.72%	29.47%	29.86%	29.66%	36.69%	37.22%	36.97%
Matabeleland South	20.29%	20.18%	20.24%	32.42%	28.79%	30.62%	31.01%	33.52%	32.36%
Midlands	18.48%	17.96%	18.22%	23.34%	23.19%	23.27%	28.24%	31.68%	29.98%
Grand Total	17.15%	16.84%	17.00%	23.07%	22.68%	22.88%	28.85%	30.89%	29.86%

6.2 Number of OVC by Type

Table 71: Number of ECD OVC by Type, Sex and Province

Province	Double Orphans			Single Orphans (maternal)			Single Orphans (paternal)			Vulnerable but not Orphaned			Grand Total
	M	F	T	M	F	T	M	F	T	M	F	T	
Bulawayo	126	138	264	144	146	290	160	167	327	380	393	773	1654
Harare	125	148	273	201	237	438	239	201	440	437	403	840	1991
Manicaland	1003	971	1974	1639	1601	3240	1906	1901	3807	4978	4878	9856	18877
Mashonaland Central	697	644	1341	1037	1017	2054	1140	1110	2250	2654	2642	5296	10941
Mashonaland East	726	666	1392	1010	1049	2059	1182	1127	2309	2742	2708	5450	11210
Mashonaland West	778	730	1508	1121	1199	2320	1111	1080	2191	2855	2824	5679	11698
Masvingo	1038	1023	2061	1582	1537	3119	1794	1581	3375	4249	3932	8181	16736
Matabeleland North	484	459	943	775	748	1523	767	754	1521	2920	2816	5736	9723
Matabeleland South	417	409	826	675	668	1343	730	717	1447	2324	2314	4638	8254
Midlands	999	943	1942	1533	1550	3083	1528	1416	2944	3520	3481	7001	14970
Grand Total	6393	6131	12524	9717	9752	19469	10557	10054	20611	27059	26391	53450	106054

Table 72: Percentage of ECD OVC by Type, Province and Sex.

Province	Double Orphans			Single Orphans (maternal)			Single Orphans (paternal)			Vulnerable but not Orphaned		
	M	F	T	M	F	T	M	F	T	M	F	T
Bulawayo	15.56%	16.35%	15.96%	17.78%	17.30%	17.53%	19.75%	19.79%	19.77%	46.91%	46.56%	46.74%
Harare	12.48%	14.96%	13.71%	20.06%	23.96%	22.00%	23.85%	20.32%	22.10%	43.61%	40.75%	42.19%
Manicaland	10.53%	10.38%	10.46%	17.21%	17.12%	17.16%	20.01%	20.33%	20.17%	52.26%	52.17%	52.21%
Mashonaland Central	12.61%	11.90%	12.26%	18.76%	18.79%	18.77%	20.62%	20.51%	20.56%	48.01%	48.81%	48.41%
Mashonaland East	12.83%	12.00%	12.42%	17.84%	18.90%	18.37%	20.88%	20.31%	20.60%	48.45%	48.79%	48.62%
Mashonaland West	13.27%	12.52%	12.89%	19.11%	20.56%	19.83%	18.94%	18.52%	18.73%	48.68%	48.41%	48.55%
Masvingo	11.98%	12.67%	12.31%	18.26%	19.04%	18.64%	20.71%	19.58%	20.17%	49.05%	48.71%	48.88%
Matabeleland North	9.79%	9.61%	9.70%	15.67%	15.66%	15.66%	15.51%	15.78%	15.64%	59.04%	58.95%	58.99%
Matabeleland South	10.06%	9.96%	10.01%	16.28%	16.26%	16.27%	17.61%	17.45%	17.53%	56.05%	56.33%	56.19%
Midlands	13.18%	12.76%	12.97%	20.22%	20.97%	20.59%	20.16%	19.16%	19.67%	46.44%	47.10%	46.77%
Grand Total	11.90%	11.72%	11.81%	18.09%	18.64%	18.36%	19.65%	19.21%	19.43%	50.36%	50.43%	50.40%

Table 73: Number of Primary School OVC by Type, Sex and Province

Province	Double Orphans			Single Orphans (maternal)			Single Orphans (paternal)			Vulnerable but not Orphaned			Grand Total
	M	F	T	M	F	T	M	F	T	M	F	T	
Bulawayo	1164	1182	2346	1917	2026	3943	2652	2751	5403	3861	3878	7739	19431
Harare	3965	1827	5792	3405	3461	6866	4511	4734	9245	4182	3974	8156	30059
Manicaland	6604	6443	13047	9382	9424	18806	15731	15048	30779	19630	19108	38738	101370
Mashonaland Central	4090	4048	8138	5709	5700	11409	8019	7878	15897	10675	10648	21323	56767
Mashonaland East	4652	4629	9281	6917	6936	13853	10325	10508	20833	12147	11915	24062	68029
Mashonaland West	5220	5315	10535	7366	7421	14787	10203	10056	20259	13687	12954	26641	72222
Masvingo	6277	5986	12263	8611	8503	17114	12746	12306	25052	16285	16007	32292	86721
Matabeleland North	2882	2740	5622	4158	4257	8415	5754	5909	11663	12787	12534	25321	51021
Matabeleland South	2456	2427	4883	3730	3714	7444	5341	5462	10803	12416	9281	21697	44827
Midlands	5719	5550	11269	8462	8568	17030	10482	10451	20933	16566	16042	32608	81840
Grand Total	43029	40147	83176	59657	60010	119667	85764	85103	170867	122236	116341	238577	612287

Table 74: Percentage of Primary School OVC by Type, Sex and Province

Province	Double Orphans			Single Orphans (maternal)			Single Orphans (paternal)			Vulnerable but not Orphaned		
	M	F	T	M	F	T	M	F	T	M	F	T
Bulawayo	12.13%	12.02%	12.07%	19.98%	20.60%	20.29%	27.64%	27.97%	27.81%	40.24%	39.42%	39.83%
Harare	24.68%	13.05%	19.27%	21.20%	24.73%	22.84%	28.08%	33.82%	30.76%	26.03%	28.39%	27.13%
Manicaland	12.86%	12.88%	12.87%	18.27%	18.84%	18.55%	30.64%	30.08%	30.36%	38.23%	38.20%	38.21%
Mashonaland Central	14.35%	14.32%	14.34%	20.04%	20.16%	20.10%	28.14%	27.86%	28.00%	37.47%	37.66%	37.56%
Mashonaland East	13.67%	13.62%	13.64%	20.32%	20.41%	20.36%	30.33%	30.92%	30.62%	35.68%	35.06%	35.37%
Mashonaland West	14.31%	14.87%	14.59%	20.19%	20.76%	20.47%	27.97%	28.13%	28.05%	37.52%	36.24%	36.89%
Masvingo	14.29%	13.99%	14.14%	19.61%	19.87%	19.73%	29.02%	28.75%	28.89%	37.08%	37.40%	37.24%
Matabeleland North	11.27%	10.77%	11.02%	16.25%	16.73%	16.49%	22.49%	23.23%	22.86%	49.99%	49.27%	49.63%
Matabeleland South	10.26%	11.62%	10.89%	15.58%	17.78%	16.61%	22.31%	26.15%	24.10%	51.86%	44.44%	48.40%
Midlands	13.87%	13.67%	13.77%	20.52%	21.10%	20.81%	25.42%	25.73%	25.58%	40.18%	39.50%	39.84%
Grand Total	13.85%	13.31%	13.58%	19.20%	19.90%	19.54%	27.60%	28.22%	27.91%	39.34%	38.57%	38.96%

Table 75: Number of Secondary School OVC by Type, Sex and Province

Province	Double Orphans			Single Orphans (maternal)			Single Orphans (paternal)			Vulnerable but not Orphaned			Grand Total
	M	F	T	M	F	T	M	F	T	M	F	T	
Bulawayo	1003	1297	2300	1766	1950	3716	1920	2431	4351	1611	1593	3204	13571
Harare	2241	2272	4513	3182	3230	6412	3660	4030	7690	2628	3125	5753	24368
Manicaland	4943	4634	9577	6010	5789	11799	8593	8635	17228	6560	6653	13213	51817
Mashonaland Central	2758	2666	5424	3233	3311	6544	4204	4363	8567	4127	4295	8422	28957
Mashonaland East	4127	3972	8099	4852	4973	9825	6625	6694	13319	4502	4386	8888	40131
Mashonaland West	3607	3381	6988	4643	4290	8933	5583	5612	11195	4604	4548	9152	36268
Masvingo	4457	4433	8890	5098	5263	10361	7239	7299	14538	4968	5314	10282	44071
Matabeleland North	1644	1933	3577	2223	2648	4871	2861	3387	6248	3185	3829	7014	21710
Matabeleland South	1461	1837	3298	1946	2455	4401	2486	3292	5778	2031	2388	4419	17896
Midlands	3917	4278	8195	5128	6126	11254	5605	6310	11915	5163	5967	11130	42494
Grand Total	30158	30703	60861	38081	40035	78116	48776	52053	100829	39379	42098	81477	321283

Table 76: Percentage of Secondary School OVC by Type, Sex and Province

Province	Double Orphans			Single Orphans (maternal)			Single Orphans (paternal)			Vulnerable but not Orphaned		
	M	F	T	M	F	T	M	F	T	M	F	T
Bulawayo	15.92%	17.84%	16.95%	28.03%	26.82%	27.38%	30.48%	33.43%	32.06%	25.57%	21.91%	23.61%
Harare	19.14%	17.95%	18.52%	27.17%	25.52%	26.31%	31.25%	31.84%	31.56%	22.44%	24.69%	23.61%
Manicaland	18.93%	18.02%	18.48%	23.02%	22.52%	22.77%	32.92%	33.58%	33.25%	25.13%	25.88%	25.50%
Mashonaland Central	19.26%	18.22%	18.73%	22.57%	22.62%	22.60%	29.35%	29.81%	29.59%	28.82%	29.35%	29.08%
Mashonaland East	20.53%	19.84%	20.18%	24.13%	24.83%	24.48%	32.95%	33.43%	33.19%	22.39%	21.90%	22.15%
Mashonaland West	19.56%	18.96%	19.27%	25.18%	24.06%	24.63%	30.28%	31.47%	30.87%	24.97%	25.51%	25.23%
Masvingo	20.48%	19.87%	20.17%	23.43%	23.59%	23.51%	33.26%	32.72%	32.99%	22.83%	23.82%	23.33%
Matabeleland North	16.58%	16.39%	16.48%	22.43%	22.45%	22.44%	28.86%	28.71%	28.78%	32.13%	32.46%	32.31%
Matabeleland South	18.44%	18.42%	18.43%	24.56%	24.62%	24.59%	31.37%	33.01%	32.29%	25.63%	23.95%	24.69%
Midlands	19.77%	18.86%	19.29%	25.88%	27.01%	26.48%	28.29%	27.82%	28.04%	26.06%	26.31%	26.19%
Grand Total	19.28%	18.62%	18.94%	24.35%	24.28%	24.31%	31.19%	31.57%	31.38%	25.18%	25.53%	25.36%

6.3 Number of Learners by Impairments

Table 77: Enrolment by Impairments

Disability Type		Primary			Secondary			Grand Total
		M	F	T	M	F	T	
Visual impairment	Low vision	2839	2452	5291	1156	1169	2325	7616
	Blind	164	130	294	81	51	132	426
Physical Impairment	Gross motor	1580	1205	2785	209	191	400	3185
	Fine motor	1566	1215	2781	261	213	474	3255
Hearing impairment	Mild to moderate	2878	2343	5221	567	496	1063	6284
	Severe to profound	1465	1094	2559	224	175	399	2958
Intellectual challenges	Mild to moderate	8535	6604	15139	1859	1582	3441	18580
	Severe to profound	3398	2458	5856	602	512	1114	6970
Communication and speech	Mild to moderate	3000	1827	4827	424	274	698	5525
	Severe to profound	1134	793	1927	73	60	133	2060
Learning Disability	Dyslexia	5765	4480	10245	733	429	1162	11407
Multiple Disabilities		2254	1718	3972	202	159	361	4333
Grand Total		34578	26319	60897	6391	5311	11702	72599

Table 78: Primary Enrolments by Impairments, Sex and Province

Province	Visual impairment		Physical Impairment		Hearing impairment		Intellectual challenges		Communication and speech		Learning Disability	Multiple Disabilities	Grand Total
	Low vision	Blind	Gross motor	Fine motor	Mild to moderate	Severe to profound	Mild to moderate	Severe to profound	Mild to moderate	Severe to profound	Dyslexia		
Bulawayo	171	31	112	81	265	152	408	193	77	56	242	206	1994
Harare	399	21	363	107	248	234	568	285	169	75	382	204	3055
Manicaland	824	16	427	385	716	358	2779	862	894	267	969	373	8870
Mashonaland Central	565	12	256	235	523	167	1405	436	718	73	975	260	5625
Mashonaland East	443	24	262	264	440	233	1308	738	366	165	748	433	5424
Mashonaland West	633	65	361	440	717	304	1487	799	576	393	1387	345	7507
Masvingo	825	77	353	354	793	315	1526	722	669	187	1235	830	7886
Matabeleland North	388	14	220	259	507	158	1826	625	308	160	2180	348	6993
Matabeleland South	330	22	169	234	430	128	832	365	144	59	718	194	3625
Midlands	713	12	262	422	582	510	3000	831	906	492	1409	779	9918
Grand Total	5291	294	2785	2781	5221	2559	15139	5856	4827	1927	10245	3972	60897

Table 79: Secondary Enrolments by Impairments, Sex and Province

Province	Visual impairment		Physical Impairment		Hearing impairment		Intellectual challenges		Communication and speech		Learning Disability	Multiple Disabilities	Grand Total
	Low vision	Blind	Gross motor	Fine motor	Mild to moderate	Severe to profound	Mild to moderate	Severe to profound	Mild to moderate	Severe to profound	Dyslexia		
Bulawayo	106	2	12	23	30	6	39	31	5	0	96	2	352
Harare	205	5	100	48	78	129	246	61	62	26	238	37	1235
Manicaland	267	8	49	59	115	28	394	135	63	9	51	17	1195
Mashonaland Central	152	2	29	48	87	11	151	34	90	14	154	27	799
Mashonaland East	200	10	35	45	112	40	366	229	72	48	69	36	1262
Mashonaland West	304	27	47	81	246	94	611	169	142	8	193	101	2023
Masvingo	268	55	45	37	50	22	380	141	51	7	22	15	1093
Matabeleland North	219	5	35	37	142	29	460	188	97	16	158	16	1402
Matabeleland South	292	14	12	31	83	28	536	31	9	2	94	11	1143
Midlands	312	4	36	65	120	12	258	95	107	3	87	99	1198
Grand Total	2325	132	400	474	1063	399	3441	1114	698	133	1162	361	11702

6.4 Orphaned and Vulnerable Children (OVC) and BEAM

Table 80: Primary School, Learners Paid for

Province	Paid by BEAM			Other Learners paid for outside BEAM			Grand Total	% learners paid for	% OVC paid for
	M	F	T	M	F	T			
Bulawayo	2969	3021	5990	1133	1118	2251	8241	7.67%	42.41%
Harare	6109	6145	12254	1070	1149	2219	14473	5.40%	48.15%
Manicaland	26785	28515	55300	2697	2996	5693	60993	14.55%	60.17%
Mashonaland Central	15946	15898	31844	1731	1730	3461	35305	14.29%	62.19%
Mashonaland East	18731	18009	36740	1207	1266	2473	39213	13.46%	57.64%
Mashonaland West	18706	18389	37095	1670	1732	3402	40497	12.85%	56.07%
Masvingo	16635	16555	33190	1124	1040	2164	35354	9.88%	40.77%
Matabeleland North	12522	12731	25253	957	1015	1972	27225	15.83%	53.36%
Matabeleland South	8983	9247	18230	892	1095	1987	20217	13.81%	45.10%
Midlands	20022	19919	39941	1000	1064	2064	42005	11.94%	51.33%
Grand Total	147408	148429	295837	13481	14205	27686	323523	12.09%	52.84%

Table 81: Primary School Learners on BEAM with Claims Outstanding and Paid For by Province and Sex

Province	Paid by BEAM			BEAM Claim Still outstanding			Grand Total	% Claim Outstanding
	M	F	T	M	F	T		
Bulawayo	670	588	1258	2299	2433	4732	5990	79.00%
Harare	1572	1576	3148	4537	4569	9106	12254	74.31%
Manicaland	3567	3858	7425	23218	24657	47875	55300	86.57%
Mashonaland Central	1738	1621	3359	14208	14277	28485	31844	89.45%
Mashonaland East	1712	1672	3384	17019	16337	33356	36740	90.79%
Mashonaland West	3086	3021	6107	15620	15368	30988	37095	83.54%
Masvingo	2436	2395	4831	14199	14160	28359	33190	85.44%
Matabeleland North	1604	1584	3188	10918	11147	22065	25253	87.38%
Matabeleland South	1005	1029	2034	7978	8218	16196	18230	88.84%
Midlands	2168	2003	4171	17854	17916	35770	39941	89.56%
Grand Total	19558	19347	38905	127850	129082	256932	295837	86.85%

Table 82: Secondary School, % OVC being assisted

Province	Paid by BEAM			Other Learners paid for outside BEAM			Grand Total	% learners paid for	% OVC paid for
	M	F	T	M	F	T			
Bulawayo	1470	1703	3173	1384	1396	2780	5953	5.73%	43.87%
Harare	2214	2375	4589	1461	1729	3190	7779	3.77%	31.92%
Manicaland	8796	8066	16862	3037	6058	9095	25957	10.05%	50.09%
Mashonaland Central	5682	4751	10433	1196	4010	5206	15639	12.33%	54.01%
Mashonaland East	8123	6584	14707	1390	3302	4692	19399	11.25%	48.34%
Mashonaland West	11343	8276	19619	1171	3084	4255	23874	16.31%	65.83%
Masvingo	6677	5989	12666	1257	3464	4721	17387	9.10%	39.58%
Matabeleland North	3644	4564	8208	1514	3674	5188	13396	13.98%	61.70%
Matabeleland South	2655	2953	5608	1289	2447	3736	9344	10.14%	52.21%
Midlands	7882	7140	15022	1567	5192	6759	21781	10.60%	51.26%
Grand Total	58486	52401	110887	15266	34356	49622	160509	10.31%	49.98%

Table 83: Secondary School Learners on BEAM with Claims Outstanding and Paid For by Province and Sex

Province	Paid by BEAM			BEAM Claim Still outstanding			Grand Total	% Claim Outstanding
	M	F	T	M	F	T		
Bulawayo	464	561	1025	1006	1142	2148	3173	67.70%
Harare	658	680	1338	1556	1695	3251	4589	70.84%
Manicaland	1025	953	1978	7771	7113	14884	16862	88.27%
Mashonaland Central	886	767	1653	4796	3984	8780	10433	84.16%
Mashonaland East	922	704	1626	7201	5880	13081	14707	88.94%
Mashonaland West	1557	1329	2886	9786	6947	16733	19619	85.29%
Masvingo	1106	1027	2133	5571	4962	10533	12666	83.16%
Matabeleland North	731	895	1626	2913	3669	6582	8208	80.19%
Matabeleland South	232	250	482	2423	2703	5126	5608	91.41%
Midlands	1013	835	1848	6869	6305	13174	15022	87.70%
Grand Total	8594	8001	16595	49892	44400	94292	110887	85.03%

Chapter 7: Teaching Staff

7.1 Teacher Trends

Table 84: Primary and Secondary Teachers LTR 1999-2016

Year	Primary					Secondary				
	Teachers			LTR		Teachers			LTR	
	Total Teachers	Trained Teachers	% Trained	All	Trained	Total Teachers	Trained Teachers	% Trained	All	Trained
2012	73,160	65,547	89.59%	36	41	41,272	29,687	71.93%	23	32
2013	73,148	62,807	85.86%	36	42	42,585	31,066	72.95%	22	31
2014	74,129	66,092	89.16%	36	40	43,361	32,171	74.19%	23	30
2015	75,072	70,466	93.86%	35	38	46,512	35,405	76.12%	22	29
2016	72,410	70,397	97.22%	37	38	45,326	36,293	80.07%	23	29
2017	71,242	69,401	97.42%	38	39	45,780	38,326	83.72%	23	28

Table 85: Number of Trained and Untrained Teachers by Level and Province

Province	ECD			Primary			Secondary		
	Trained to teach	Untrained	% Trained	Trained to teach	Untrained	% Trained	Trained to teach	Untrained	% Trained
Bulawayo	90	606	12.93%	3085	75	97.63%	2196	474	82.25%
Harare	938	163	85.20%	6496	216	96.78%	4495	1038	81.24%
Manicaland	1013	1582	39.04%	11240	237	97.94%	6578	961	87.25%
Mashonaland Central	569	895	38.87%	5946	62	98.97%	2533	707	78.18%
Mashonaland East	1318	393	77.03%	7672	166	97.88%	4384	928	82.53%
Mashonaland West	923	788	53.95%	7467	447	94.35%	4123	810	83.58%
Masvingo	1308	788	62.40%	10194	92	99.11%	4936	958	83.75%
Matabeleland North	299	704	29.81%	4007	244	94.26%	2206	388	85.04%
Matabeleland South	234	299	43.90%	3731	70	98.16%	2079	210	90.83%
Midlands	1212	815	59.79%	9563	232	97.63%	4796	980	83.03%
Grand Total	7904	7033	52.92%	69401	1841	97.42%	38326	7454	83.72%

7.2 ECD Teachers

Table 86: Number of ECD Teachers by Location, Qualification Status and Sex

Location	Trained to teach			Untrained			Grand Total			% Trained to teach		
	M	F	T	M	F	T	M	F	T	M	F	T
Rural	1117	4581	5698	345	5392	5737	1462	9973	11435	76.40%	45.93%	49.83%
Urban	240	1966	2206	54	1242	1296	294	3208	3502	81.63%	61.28%	62.99%
Grand Total	1357	6547	7904	399	6634	7033	1756	13181	14937	77.28%	49.67%	52.92%

Table 87: Number of ECD teachers by Qualification and Sex

Highest qualification	M	F	Grand Total	% T	% F
Graduate with teaching qualification	331	779	1110	7.43%	70.18%
ECD Para Professional	316	5897	6213	41.59%	94.91%
Graduate without teaching qualification	19	49	68	0.46%	72.06%
Non-Teaching Degree	60	676	736	4.93%	91.85%
Other Unqualified	4	12	16	0.11%	75.00%
Diploma or Certificate in Education	1026	5768	6794	45.48%	84.90%
Grand Total	1756	13181	14937	100.00%	88.24%

Table 88 : Number of ECD Teachers by Qualification Status, Type of Employment and Sex

Highest qualification	Permanent PSC			Contract PSC			Other		
	M	F	T	M	F	T	M	F	T
Graduate with teaching qualification	312	709	1021	1	5	6	18	65	83
ECD Para Professional	45	593	638	3	58	61	268	5245	5513
Graduate without teaching qualification	16	33	49		1	1	3	15	18
Non-Teaching Degree	7	35	42	1	15	16	52	626	678
Other Unqualified		3	3		2	2	4	7	11
Diploma or Certificate in Education	982	5352	6334	2	24	26	42	392	434
Grand Total	1362	6725	8087	7	105	112	387	6350	6737

7.3 ECD Learner -Teacher Ratios

Table 89: Learner to Teacher Ratio

Location	Trained to teach	Total Teachers	Learners	LTR	L to QTR
Rural	5698	11435	514348	45	90
Urban	2206	3502	109633	31	50
Grand Total	7904	14937	623981	42	79

Table 90: ECD Teachers by Province, Qualification Status and Teacher to Pupil Ratio

Province	Trained to teach	Total Teachers	Number of Primary Pupils	Pupil to Teacher Ratios	Pupil to Trained Teacher Ratios
Bulawayo	90	696	17922	26	199
Harare	938	1101	32757	30	35
Manicaland	1013	2595	109269	42	108
Mashonaland Central	569	1464	61945	42	109
Mashonaland East	1318	1711	70467	41	53
Mashonaland West	923	1711	71963	42	78
Masvingo	1308	2096	93917	45	72
Matabeleland North	299	1003	42796	43	143
Matabeleland South	234	533	40786	77	174
Midlands	1212	2027	82159	41	68
Grand Total	7904	14937	623981	42	79

7.4 Primary School Teachers

Table 91: Number of Primary Teachers by Location, Qualification Status and Sex

	Trained			Untrained			Grand Total			% trained to Teach		
	M	F	Trained Total	M	F	T	M	F	T	M	F	T
UR												
Rural	24734	27469	52203	689	711	1400	25423	28180	53603	97.29%	97.48%	97.39%
Urban	3627	13571	17198	149	292	441	3776	13863	17639	96.05%	97.89%	97.50%
Grand Total	28361	41040	69401	838	1003	1841	29199	42043	71242	97.13%	97.61%	97.42%

Table 92: Number of Primary Teachers by Qualification and Sex

Highest Qualification	M	F	Grand Total	% Total	% F
Graduate with teaching qualification	5822	6515	12337	17.32%	52.81%
ECD Para Professional	136	248	384	0.54%	64.58%
Graduate without teaching qualification	339	349	688	0.97%	50.73%
Non-Teaching Degree	358	400	758	1.06%	52.77%
Other Unqualified	5	6	11	0.02%	54.55%
Diploma or Certificate in Education	22539	34525	57064	80.10%	60.50%
Grand Total	29199	42043	71242	100.00%	59.01%

Table 93: Number of Primary Teachers by Qualification Status, Type of Employment and Sex

Highest qualification	Permanent PSC			Contract PSC			Other			Grand Total
	M	F	T	M	F	T	M	F	T	
Graduate with teaching qualification	5607	6123	11730	26	39	65	189	353	542	12337
ECD Para Professional	115	167	282	1	3	4	20	78	98	384
Graduate without teaching qualification	284	288	572	11	14	25	44	47	91	688
Non-Teaching Degree	263	301	564	16	16	32	79	83	162	758
Other Unqualified	3	3	6		1	1	2	2	4	11
Diploma or Certificate in Education	22022	33536	55558	64	144	208	453	845	1298	57064
Grand Total	28294	40418	68712	118	217	335	787	1408	2195	71242

7.5 Primary School Learner-Teacher Ratios

The table below shows primary learner to teacher ratios by location. Learner to teacher ratio is the same in both areas (1:37) same applies with learner to qualified teacher ratio (1:38).

Table 94: Learner to Teacher Ratios by Location

Location	Trained to teach	Total Teachers	Learners	LTR	L to QTR
Rural	52203	53603	2016955	38	39
Urban	17198	17639	659530	37	38
Grand Total	69401	71242	2676485	38	39

Table 95: Primary Teachers by Province and Learner to Teacher Ratio

Province	Trained to teach	Total Teachers	Number of Primary Pupils	Pupil to Teacher Ratios	Pupil to Trained Teacher Ratios
Bulawayo	3085	3160	107399	34	35
Harare	6496	6712	268187	40	41
Manicaland	11240	11477	419305	37	37
Mashonaland Central	5946	6008	247139	41	42
Mashonaland East	7672	7838	291347	37	38
Mashonaland West	7467	7914	315202	40	42
Masvingo	10194	10286	357795	35	35
Matabeleland North	4007	4251	171993	40	43
Matabeleland South	3731	3801	146395	39	39
Midlands	9563	9795	351723	36	37
Grand Total	69401	71242	2676485	38	39

7.6 Secondary School Teachers

Table 96: Number of Secondary Teachers by Location, Qualification Status and Sex

	Qualified			Unqualified			(blank)			Grand Total
	M	F	T	M	F	T	M	F	T	
UR										
Rural	14793	11862	26655	2952	1976	4928	26	32	58	31641
Urban	4764	6907	11671	1449	968	2417	33	18	51	14139
Grand Total	19557	18769	38326	4401	2944	7345	59	50	109	45780

Table 97: Number of Secondary School Teachers by Qualification and Sex

Highest qualification	M	F	Grand Total	% Total	% F
Diploma or Certificate	10580	11172	21752	47.51%	51.36%
Graduate with Teaching Qualification	8977	7597	16574	36.20%	45.84%
Graduate without Teaching Qualification	3630	2294	5924	12.94%	38.72%
Other (unqualified)	771	650	1421	3.10%	45.74%
Not Reported	59	50	109	0.24%	45.87%
Grand Total	24017	21763	45780	100.00%	47.54%

Table 98: Number of Secondary School Teachers by Qualification Status, Type of Employment and Sex

Highest qualification	Permanent PSC			Contract PSC			Other			Not Reported			Grand Total
	M	F	T	M	F	T	M	F	T	M	F	T	
Diploma or Certificate	9828	10680	20508	39	29	68	709	459	1168	4	4	8	21752
Graduate with Teaching Qualification	8102	6897	14999	32	21	53	841	679	1520	2		2	16574
Graduate without Teaching Qualification	2879	1957	4836	44	28	72	704	306	1010	3	3	6	5924
Other (unqualified)	533	526	1059	7	7	14	231	117	348				1421
Not Reported	31	39	70				28	11	39				109
Grand Total	21373	20099	41472	122	85	207	2513	1572	4085	9	7	16	45780

7.7 Secondary School Learner - Teacher Ratios

Table 99: Secondary School Learner to Teacher Ratio by Location

Location	Trained to teach	Total Teachers	Learners	LTR	L to QTR
Rural	26655	31641	763441	24	29
Urban	11671	14139	311884	22	27
Grand Total	38326	45780	1075325	23	28

Table 100: Secondary Teachers by Province, Qualification Status and Teacher to Learner Ratio

Province	Trained to teach	Total Teachers	Number of Secondary Learners	Learner to Teacher Ratios	Learner to Trained Teacher Ratios
Bulawayo	2196	2670	55350	21	25
Harare	4495	5533	121633	22	27
Manicaland	6578	7539	167800	22	26
Mashonaland Central	2533	3240	84634	26	33
Mashonaland East	4384	5312	130707	25	30
Mashonaland West	4123	4933	120260	24	29
Masvingo	4936	5894	139163	24	28
Matabeleland North	2206	2594	58717	23	27
Matabeleland South	2079	2289	55303	24	27
Midlands	4796	5776	141758	25	30
Grand Total	38326	45780	1075325	23	28

Chapter 8: Internal Efficiency

8.1 Repetition

Table 101: Repeaters by Sex 2012 to 2017

Year	Primary			Secondary			Grand Total	% repeaters Primary	% repeaters Secondary
	M	F	T	M	F	T			
2012	33797	26626	60423	10147	8553	18700	79123	2.06%	2.04%
2013	30301	24045	54346	9981	8486	18467	72813	1.84%	1.95%
2014	29917	23409	53326	10489	8690	19179	72505	1.77%	1.97%
2015	23818	17823	41641	10800	9425	20225	61866	1.32%	1.97%
2016	16228	13115	29343	10615	8086	18701	48044	0.91%	1.76%
2017	17852	13905	31757	8077	7578	15655	47412	0.96%	1.46%

Table 102: Primary Level Repeaters as a Percentage of Enrolment by Sex and Grade

Grade	Repeaters			Enrolment			% Repeaters			GPI
	M	F	Total	M	F	Total	M	F	Total	
ECD A	624	574	1198	139366	139430	278796	0.45%	0.41%	0.43%	0.92
ECD B	1208	1075	2283	173934	171251	345185	0.69%	0.63%	0.66%	0.90
Grade 1	4143	3140	7283	227688	223201	450889	1.82%	1.41%	1.62%	0.77
Grade 2	2894	2356	5250	204941	201142	406083	1.41%	1.17%	1.29%	0.83
Grade 3	2100	1589	3689	194937	190518	385455	1.08%	0.83%	0.96%	0.77
Grade 4	1949	1425	3374	186836	184584	371420	1.04%	0.77%	0.91%	0.74
Grade 5	1991	1480	3471	180600	177828	358428	1.10%	0.83%	0.97%	0.75
Grade 6	2005	1504	3509	178655	179493	358148	1.12%	0.84%	0.98%	0.75
Grade 7	938	762	1700	167628	169322	336950	0.56%	0.45%	0.50%	0.80
Total	17852	13905	31757	1654585	1636769	3291354	1.08%	0.85%	0.96%	0.79

Table 103: Secondary Level Repeaters as a Percentage of Enrolment by Sex and Grade

Grade	Repeaters			Enrolment			% Repeaters			GPI
	M	F	Total	M	F	Total	M	F	Total	
Form 1	397	424	821	130938	134880	265818	0.30%	0.31%	0.31%	1.04
Form 2	574	583	1157	127385	129380	256765	0.45%	0.45%	0.45%	1.00
Form 3	3473	3031	6504	123493	119160	242653	2.81%	2.54%	2.68%	0.90
Form 4	3468	3399	6867	109088	106101	215189	3.18%	3.20%	3.19%	1.01
Lower 6	102	80	182	25391	22796	48187	0.40%	0.35%	0.38%	0.87
Upper 6	63	61	124	24967	20783	45750	0.25%	0.29%	0.27%	1.16
Grand Total	8077	7578	15655	541262	533100	1074362	1.49%	1.42%	1.46%	0.95

Table 104: Repeaters by Province and Level of Education

Province	ECD A and B			Grade 1-7			Form 1-6			Grand Total
	M	F	Total	M	F	Total	M	F	Total	
Bulawayo	57	44	101	619	528	1147	399	436	835	2083
Harare	68	41	109	432	278	710	1074	1060	2134	2953
Manicaland	136	154	290	1515	1184	2699	496	402	898	3887
Mashonaland Central	151	140	291	1207	1038	2245	136	69	205	2741
Mashonaland East	306	256	562	2166	1501	3667	955	616	1571	5800
Mashonaland West	242	217	459	2300	1770	4070	898	708	1606	6135
Masvingo	206	179	385	1982	1701	3683	752	857	1609	5677
Matabeleland North	309	269	578	1885	1465	3350	791	837	1628	5556
Matabeleland South	53	42	95	594	402	996	1072	1258	2330	3421
Midlands	304	307	611	3320	2389	5709	1504	1335	2839	9159
Grand Total	1832	1649	3481	16020	12256	28276	8077	7578	15655	47412

Table 105: Percentage Repeaters by Province and Level of Education

Province	ECD			GPI	Grade 1-7			GPI	Form 1-6			GPI
	M	F	Total		M	F	Total		M	F	Total	
Bulawayo	0.64%	0.49%	0.56%	0.76	1.17%	0.97%	1.07%	0.83	1.52%	1.50%	1.51%	0.99
Harare	0.40%	0.26%	0.33%	0.63	0.32%	0.21%	0.26%	0.64	1.79%	1.72%	1.75%	0.96
Manicaland	0.25%	0.28%	0.27%	1.14	0.72%	0.57%	0.64%	0.80	0.57%	0.50%	0.54%	0.88
Mashonaland Central	0.49%	0.45%	0.47%	0.92	0.97%	0.85%	0.91%	0.87	0.31%	0.17%	0.24%	0.55
Mashonaland East	0.86%	0.73%	0.80%	0.85	1.47%	1.04%	1.26%	0.71	1.42%	0.97%	1.20%	0.69
Mashonaland West	0.67%	0.60%	0.64%	0.90	1.45%	1.13%	1.29%	0.78	1.42%	1.24%	1.34%	0.87
Masvingo	0.43%	0.39%	0.41%	0.89	1.10%	0.96%	1.03%	0.87	1.06%	1.26%	1.16%	1.18
Matabeleland North	1.45%	1.25%	1.35%	0.86	2.17%	1.72%	1.95%	0.79	2.93%	2.64%	2.77%	0.90
Matabeleland South	0.26%	0.21%	0.23%	0.80	0.80%	0.55%	0.68%	0.69	4.19%	4.23%	4.21%	1.01
Midlands	0.74%	0.75%	0.74%	1.01	1.88%	1.36%	1.62%	0.73	2.14%	1.86%	2.00%	0.87
Grand Total	0.58%	0.53%	0.56%	0.91	1.19%	0.92%	1.06%	0.77	1.49%	1.42%	1.46%	0.95

8.2 Dropouts

Table 106: Dropouts Trends, 2012 to 2017

Year	Primary			Secondary			Grand Total	% dropouts Primary	% dropouts Secondary
	M	F	T	M	F	T			
2012	5822	5755	11577	4279	5830	10109	21686	0.38%	1.08%
2013	2842	2708	5550	3797	5065	8862	14412	0.18%	0.93%
2014	15316	13982	29298	14498	17800	32298	61596	0.95%	3.30%
2015	16905	14882	31787	19534	23810	43344	75131	1.00%	4.22%
2016	15588	13715	29303	18174	21468	39642	68945	0.90%	3.72%
2017	14941	12708	27649	19687	23272	42959	70608	0.84%	3.99%

Table 107: Primary School Dropouts by Reasons

Dropout by reason	M	F	Grand Total	% Female	% Total
Absconded	7211	5599	12810	43.71%	46.33%
Death	748	605	1353	44.72%	4.89%
Expulsion	32	15	47	31.91%	0.17%
Illness	479	435	914	47.59%	3.31%
Marriage	26	361	387	93.28%	1.40%
Other	1931	1758	3689	47.66%	13.34%
Pregnancy	4	159	163	97.55%	0.59%
Financial	4510	3776	8286	45.57%	29.97%
Grand Total	14941	12708	27649	45.96%	100.00%

Table 108: Secondary School Dropouts by Reasons

Dropout by reason	M	F	Grand Total	% Female	% Total
Absconded	6463	4579	11042	41.47%	25.70%
Death	294	278	572	48.60%	1.33%
Expulsion	130	94	224	41.96%	0.52%
Illness	257	351	608	57.73%	1.42%
Marriage	371	4063	4434	91.63%	10.32%
Other	1380	1308	2688	48.66%	6.26%
Pregnancy	125	3368	3493	96.42%	8.13%
Financial	10667	9231	19898	46.39%	46.32%
Grand Total	19687	23272	42959	54.17%	100.00%

8.3 Promotion, Repetition and Dropout Rates

Table 109: Promotion, Repetition and Dropout Rates by Grade

Grade	Promotion 2016 to 2017			Repetition 2017			Dropout 2017		
	Male	Female	Total	Male	Female	Total	Male	Female	Total
To Grade 2	91.70%	93.51%	92.59%	1.88%	1.48%	1.68%	6.42%	5.01%	5.73%
To Grade 3	95.71%	96.78%	96.24%	1.44%	1.21%	1.32%	2.85%	2.01%	2.44%
To Grade 4	95.96%	97.31%	96.63%	1.09%	0.84%	0.97%	2.95%	1.84%	2.40%
To Grade 5	97.11%	98.16%	97.63%	1.06%	0.79%	0.93%	1.83%	1.05%	1.44%
To Grade 6	96.21%	97.27%	96.74%	1.08%	0.81%	0.95%	2.70%	1.92%	2.31%
To Grade 7	90.81%	92.49%	91.64%	1.09%	0.83%	0.96%	8.10%	6.69%	7.40%
To Form 1	76.89%	79.16%	78.03%	0.55%	0.45%	0.50%	22.55%	20.40%	21.47%
To Form 2	94.01%	93.67%	93.84%	0.29%	0.31%	0.30%	5.70%	6.02%	5.86%
To Form 3	98.24%	94.75%	96.49%	0.47%	0.48%	0.47%	1.29%	4.77%	3.03%
To Form 4	84.44%	84.28%	84.37%	2.78%	2.49%	2.63%	12.78%	13.23%	13.00%
To Lower 6	23.54%	22.09%	22.83%	3.23%	3.31%	3.27%	73.23%	74.60%	73.90%
To Upper 6	95.45%	95.37%	76.78%	0.39%	0.37%	1.58%	4.15%	4.26%	21.64%

Table 110: Transition Rates, Grade 7 to Form 1 and Form 4 to Form 5, 2011 to 2017

	From Grade 7 to Form 1				From Form 4 to Lower 6			
	M	F	T	GPI	M	F	T	GPI
2011 to 2012	78.40%	75.40%	76.90%	0.96	17.70%	20.20%	19.00%	1.14
2012 to 2013	79.40%	76.80%	78.15%	1.03	16.60%	19.40%	18.03%	0.85
2013 to 2014	75.95%	78.00%	76.98%	1.03	19.44%	16.69%	18.12%	0.86
2014 to 2015	78.59%	80.39%	79.48%	1.02	21.32%	18.69%	20.05%	0.88
2015 to 2016	80.27%	81.16%	80.72%	1.01	24.08%	21.30%	22.73%	0.88
2016 to 2017	77.88%	79.41%	78.65%	1.02	23.18%	21.41%	22.31%	0.92

Table 111: 2016 to 2017 Transition Rates, Grade 7 and Form 4

	M	F	T	GPI
From Grade 7 to form 1	77.88%	79.41%	78.65%	1.02
From Form 4 to Form 5	23.18%	21.41%	22.31%	0.92

8.4 Survival Rates

Table 112: Survival Rates for Primary School by Sex

	M	F	T
To Grade 2	93.46%	94.91%	94.17%
To Grade 3	90.75%	92.98%	91.85%
To Grade 4	88.05%	91.25%	89.62%
To Grade 5	86.43%	90.29%	88.32%
To Grade 6	84.07%	88.54%	86.26%
To Grade 7	77.21%	82.58%	79.83%

Table 113: Survival Rates for Secondary School by Sex

	M	F	T
To Form 2	94.28%	93.96%	94.12%
To Form 3	93.06%	89.45%	91.25%
To Form 4	80.84%	77.33%	79.08%
To Form 5	19.87%	17.85%	18.86%
To Form 6	19.05%	17.10%	18.07%

8.5 Completion Rate

Table 114: Completion Rate by Level and Sex, 2012-2017

Year	ECD			Primary			Lower Secondary			Upper Secondary		
	M	F	T	M	F	T	M	F	T	M	F	T
2012	66.03%	66.28%	66.16%	74.95%	77.91%	76.42%	63.17%	59.05%	61.12%	12.12%	9.03%	10.55%
2013	68.82%	69.69%	69.25%	76.33%	78.58%	77.44%	65.68%	60.80%	63.25%	12.75%	9.92%	11.31%
2014	75.67%	75.06%	75.36%	76.73%	77.78%	77.25%	66.08%	62.28%	64.19%	12.54%	9.44%	10.96%
2015	84.45%	83.61%	84.03%	78.71%	80.78%	79.73%	67.27%	64.08%	65.68%	14.33%	10.83%	12.54%
2016	90.17%	89.82%	90.00%	78.88%	80.24%	79.56%	66.79%	64.53%	65.67%	14.53%	11.18%	12.82%
2017	94.12%	93.25%	93.68%	77.74%	79.83%	78.78%	68.06%	66.65%	67.35%	16.61%	13.29%	14.92%

8.5.1 ECD Completion Rate

Table 115: ECD Completion Rate by Sex and Province

Province	Enrolment less Repeaters			Population Aged 5			Completion Rate			GPI
	M	F	T	M	F	T	M	F	T	
Bulawayo	5426	5569	10995	7297	7454	14751	74.36%	74.71%	74.54%	1.00
Harare	11894	11352	23246	23598	24070	47669	50.40%	47.16%	48.77%	0.94
Manicaland	29386	28844	58230	26306	25940	52246	111.71%	111.20%	111.45%	1.00
Mashonaland Central	17163	17046	34209	17288	16809	34097	99.28%	101.41%	100.33%	1.02
Mashonaland East	19426	19205	38631	19166	18691	37857	101.36%	102.75%	102.04%	1.01
Mashonaland West	19723	19461	39184	21018	20624	41642	93.84%	94.36%	94.10%	1.01
Masvingo	25797	25185	50982	23672	23592	47264	108.98%	106.75%	107.87%	0.98
Matabeleland North	11132	11105	22237	11440	11264	22704	97.31%	98.59%	97.94%	1.01
Matabeleland South	10684	10618	21302	10368	10500	20868	103.05%	101.13%	102.08%	0.98
Midlands	22095	21791	43886	23361	23559	46920	94.58%	92.49%	93.53%	0.98
Total	172726	170176	342902	183515	182503	366017	94.12%	93.25%	93.68%	0.99

8.5.2 Primary School Completion Rate

Table 116: Primary Completion Rate by sex and Province

Province	Enrolment less Repeaters			Population Aged 12			Completion Rate			GPI
	M	F	T	M	F	T	M	F	T	
Bulawayo	6706	7050	13756	7815	8505	16320	85.81%	82.89%	84.29%	0.97
Harare	17110	18081	35191	24324	26435	50759	70.34%	68.40%	69.33%	0.97
Manicaland	25552	25093	50645	31501	30745	62246	81.12%	81.62%	81.36%	1.01
Mashonaland Central	15006	15193	30199	20345	19812	40157	73.76%	76.69%	75.20%	1.04
Mashonaland East	18991	18704	37695	23261	22428	45688	81.64%	83.40%	82.50%	1.02
Mashonaland West	20661	20119	40780	25294	24441	49735	81.68%	82.32%	81.99%	1.01
Masvingo	21202	21924	43126	27236	26348	53584	77.85%	83.21%	80.48%	1.07
Matabeleland North	10620	11073	21693	13943	13378	27321	76.17%	82.77%	79.40%	1.09
Matabeleland South	9396	9362	18758	12346	11552	23898	76.10%	81.04%	78.49%	1.06
Midlands	21446	21961	43407	28345	27510	55855	75.66%	79.83%	77.71%	1.06
Total	166690	168560	335250	214409	211153	425562	77.74%	79.83%	78.78%	1.03

8.5.3 Secondary School Completion Rate

Table 117: Lower Secondary School Completion Rate by Province and Sex

Province	Enrolment less Repeaters			Population Aged 16			Completion Rate			GPI
	M	F	T	M	F	T	M	F	T	
Bulawayo	5426	6046	11472	7184	9075	16259	75.53%	66.62%	70.56%	0.88
Harare	11874	12378	24252	19816	25553	45369	59.92%	48.44%	53.46%	0.81
Manicaland	17312	15553	32865	22348	20886	43233	77.47%	74.47%	76.02%	0.96
Mashonaland Central	8895	7500	16395	13655	12365	26020	65.14%	60.65%	63.01%	0.93
Mashonaland East	13536	12322	25858	17217	15212	32429	78.62%	81.00%	79.74%	1.03
Mashonaland West	12124	10497	22621	17495	16917	34412	69.30%	62.05%	65.74%	0.90
Masvingo	13959	12790	26749	18846	18354	37199	74.07%	69.69%	71.91%	0.94
Matabeleland North	4658	5954	10612	9393	8518	17911	49.59%	69.90%	59.25%	1.41
Matabeleland South	4588	5674	10262	9625	8657	18282	47.67%	65.54%	56.13%	1.37
Midlands	13248	13988	27236	19620	18563	38183	67.52%	75.35%	71.33%	1.12
Total	105620	102702	208322	155197	154101	309299	68.06%	66.65%	67.35%	0.98

Table 118: Upper Secondary Completion Rate by Sex and Province

Province	Enrolment less Repeaters			Population Aged 18			Completion Rate			GPI
	M	F	T	M	F	T	M	F	T	
Bulawayo	1714	1855	3569	7558	10109	17666	22.68%	18.35%	20.20%	0.81
Harare	4523	4085	8608	20362	28932	49294	22.21%	14.12%	17.46%	0.64
Manicaland	4129	3289	7418	20506	19417	39924	20.14%	16.94%	18.58%	0.84
Mashonaland Central	1494	1078	2572	13621	12615	26236	10.97%	8.55%	9.80%	0.78
Mashonaland East	2507	2086	4593	15837	14388	30225	15.83%	14.50%	15.20%	0.92
Mashonaland West	2208	1599	3807	17547	17019	34566	12.58%	9.40%	11.01%	0.75
Masvingo	3560	2538	6098	16668	16956	33624	21.36%	14.97%	18.14%	0.70
Matabeleland North	665	738	1403	9363	8617	17981	7.10%	8.56%	7.80%	1.21
Matabeleland South	1003	987	1990	9227	8225	17452	10.87%	12.00%	11.40%	1.10
Midlands	3101	2467	5568	19274	19593	38867	16.09%	12.59%	14.33%	0.78
Total	24904	20722	45626	149963	155872	305836	16.61%	13.29%	14.92%	0.80

Chapter 9: Facilities

9.1 Classrooms

Table 119: ECD, Primary and Secondary LCR, 2012-2017

Year	ECD LCR	Primary LCR	Secondary LCR
2012	76	43	37
2013	39	43	46
2014	73	45	44
2015	72	45	39
2016	72	45	41
2017	68	45	42

Table 120: Primary and Secondary School Enrolments, Number of Classrooms and LCR by Province

	ECD Enrolment	Primary Enrolment	Secondary Enrolment	ECD Classrooms	Primary Classrooms	Secondary Classrooms	ECD LCR	Primary LCR	Secondary LCR
Bulawayo	17922	107399	55350	314	2252	1227	57	48	45
Harare	32757	268187	121633	772	4616	3106	42	58	39
Manicaland	109269	419305	167800	1547	10200	4240	71	41	40
Mashonaland Central	61945	247139	84634	657	4896	1815	94	50	47
Mashonaland East	70467	291347	130707	1209	6695	3051	58	44	43
Mashonaland West	71963	315202	120260	1078	6355	2731	67	50	44
Masvingo	93917	357795	139163	1296	8406	3523	72	43	40
Matabeleland North	42796	171993	58717	515	3902	1400	83	44	42
Matabeleland South	40786	146395	55303	590	4108	1473	69	36	38
Midlands	82159	351723	141758	1164	7858	3233	71	45	44
Total	623981	2676485	1075325	9142	59288	25799	68	45	42

Table 121: Average Classrooms per School

Province	Average ECD Classrooms per School	Average Primary Classrooms per School	Average Secondary Classrooms per School
Bulawayo	2	17	15
Harare	3	20	13
Manicaland	2	12	10
Mashonaland Central	1	10	7
Mashonaland East	2	10	8
Mashonaland West	1	9	7
Masvingo	2	10	10
Matabeleland North	1	7	7
Matabeleland South	1	8	9
Midlands	1	10	9
Total	2	10	9

9.2 Access to Electricity

Table 122: Primary and Secondary Schools Main Source of Electricity

Main electricity source	Primary		Secondary		Grand Total
	No	% Primary	No	% Secondary	
Gas Turbine	2	0.03%		0.00%	2
Generator	97	1.58%	129	4.56%	226
Grid	2643	43.17%	1695	59.89%	4338
None	3220	52.59%	880	31.10%	4100
Other	31	0.51%	12	0.42%	43
Solar	130	2.12%	114	4.03%	244

Table 123: Percentage of Schools without Electricity by School Level and Province

Province	Primary Level			Secondary Level			Grand Total
	Total Number Schools	Schools without electricity	% Schools without	Total Number schools	Schools without electricity	% schools without	
Bulawayo	152	4	2.63%	80		0.00%	4
Harare	253	6	2.37%	232	7	3.02%	13
Manicaland	877	429	48.92%	436	137	31.42%	566
Mashonaland Central	508	201	39.57%	245	74	30.20%	275
Mashonaland East	744	342	45.97%	372	114	30.65%	456
Mashonaland West	751	389	51.80%	379	177	46.70%	566
Masvingo	870	555	63.79%	354	108	30.51%	663
Matabeleland North	616	505	81.98%	198	102	51.52%	607
Matabeleland South	512	273	53.32%	162	51	31.48%	324
Midlands	840	516	61.43%	372	110	29.57%	626
Grand Total	6123	3220	52.59%	2830	880	31.10%	4100

Table 124: Percentage of Schools with and without Electricity by Grant Type

Source of Power	P1		P2		P3		S1		S2		S3	
	No	%	No	%	No	%	No	%	No	%	No	%
Gas Turbine		0.00%	2	0.41%		0.00%		0.00%		0.00%		0.00%
Generator		0.00%	13	2.67%	84	1.55%	4	1.95%	11	3.28%	114	4.98%
Grid	222	94.87%	425	87.45%	1996	36.94%	193	94.15%	308	91.94%	1194	52.19%
None	10	4.27%	42	8.64%	3168	58.63%	6	2.93%	13	3.88%	861	37.63%
Other	1	0.43%	3	0.62%	27	0.50%		0.00%	2	0.60%	10	0.44%
Solar	1	0.43%	1	0.21%	128	2.37%	2	0.98%	1	0.30%	111	4.85%

9.3 WASH Facilities

9.3.1 Learner and Teacher to Toilet Ratio

Table 125: Learners and Teachers to Toilet Ratios by Sex, 2012-2017

year	Primary School Learner and Teacher toilet ratio by Sex				Secondary school learner and teacher toilet ratio by sex			
	Learner		Teachers		Learner		Teachers	
	Male	Female	Male	Female	Male	Female	Male	Female
2012	25	24	2	3	19	18	3	3
2013	27	25	2	3	20	19	3	3
2014	22	22	2	3	18	18	3	3
2015	25	24	2	4	18	18	3	3
2016	21	20	2	3	18	18	3	2
2017	25	24	2	3	17	18	3	3

Table 126: ECD and Primary Learner to Toilet Ratios

Province	Toilets for teachers		Toilets for ECD		Toilets for Primary		Teacher to Toilet Ratio		ECD Learner to Toilet Ratio		Primary Learner to Toilet Ratio	
	M	F	M	F	M	F	M	F	M	F	M	F
Bulawayo	289	324	459	425	1641	1725	1	11	19	21	32	31
Harare	619	650	1208	1144	3138	3197	2	10	14	14	43	42
Manicaland	2948	2948	1860	1803	9615	9791	2	3	30	30	22	21
Mashonaland Central	1600	1580	912	909	4645	4657	2	3	34	34	27	26
Mashonaland East	2439	2624	1638	1570	6484	6496	1	2	22	22	23	22
Mashonaland West	1592	1585	1406	1387	5874	6032	2	4	26	26	27	26
Masvingo	3663	2751	1802	2215	7851	8180	1	3	26	21	23	22
Matabeleland North	899	980	942	941	4376	4577	2	3	23	23	20	19
Matabeleland South	960	1070	846	864	3835	4060	2	3	24	24	19	18
Midlands	2018	2079	1700	1704	6858	7018	2	4	24	24	26	25
Grand Total	17027	16591	12773	12962	54317	55733	2	3	25	24	25	24

Table 127: Secondary Learner and Teacher to Toilet Ratios

Province	Toilets for learners		Toilets for Teachers		Secondary Learner to Toilet Ratio		Teacher to Toilet Ratio	
	M	F	M	F	M	F	M	F
Bulawayo	915	1069	233	257	29	27	4	7
Harare	2146	2258	777	600	28	27	3	5
Manicaland	5720	5247	1604	1503	15	15	3	2
Mashonaland Central	2277	2369	786	701	19	17	2	2
Mashonaland East	4244	3999	1384	1309	16	16	2	2
Mashonaland West	3361	3189	865	805	19	18	3	3
Masvingo	4622	4355	1484	1289	15	16	2	2
Matabeleland North	1697	1864	401	400	16	17	3	3
Matabeleland South	2115	2082	468	438	12	14	3	3
Midlands	3963	3955	1290	1154	18	18	2	2
Grand Total	31060	30387	9292	8456	17	18	3	3

9.4 Number of Toilets by Type and Province

Table 128: ECD Number of Toilets for Learners by Type and Province

Province	Blair Toilets		Pit Latrines		Urinals		Water Closets		Grand Total
	M	F	M	F	M	F	M	F	
Bulawayo	16	10	0	0	101	9	342	406	884
Harare	46	47	7	8	285	19	870	1070	2352
Manicaland	1464	1514	52	51	145	6	199	232	3663
Mashonaland Central	706	748	28	21	68	2	110	138	1821
Mashonaland East	1180	1222	54	46	152	12	252	290	3208
Mashonaland West	972	986	49	46	92	8	293	347	2793
Masvingo	1535	1990	10	10	68	3	189	212	4017
Matabeleland North	767	774	16	12	28	2	131	153	1883
Matabeleland South	728	771	9	9	32	1	77	83	1710
Midlands	1183	1251	61	56	138	24	318	373	3404
Grand Total	8597	9313	286	259	1109	86	2781	3304	25735

Table 129: Primary Number of Toilets for Learners by Type and Province

Province	Blair Toilets		Pit Latrines		Urinals		Water Closets		Grand Total
	M	F	M	F	M	F	M	F	
Bulawayo	48	49	4	0	293	1	1296	1675	3366
Harare	140	151	26	21	532	4	2440	3021	6335
Manicaland	8232	8680	196	204	490	16	697	891	19406
Mashonaland Central	3841	3995	138	79	171	1	495	582	9302
Mashonaland East	5317	5595	178	172	294	1	695	728	12980
Mashonaland West	4415	4549	214	225	232	14	1013	1244	11906
Masvingo	7147	7492	45	54	131	21	528	613	16031
Matabeleland North	3979	4174	85	78	65	9	247	316	8953
Matabeleland South	3519	3771	20	23	62	7	234	259	7895
Midlands	5615	5799	118	146	289	4	836	1069	13876
Grand Total	42253	44255	1024	1002	2559	78	8481	10398	110050

Table 130: Secondary School Number of Toilets for Learners by Type and Province

Province	Blair Toilets		Pit Latrines		Urinals		Water Closets		Grand Total
	M	F	M	F	M	F	M	F	
Bulawayo	30	16	5	6	215	4	665	1043	1984
Harare	63	75	11	13	524	17	1548	2153	4404
Manicaland	3998	3828	131	127	423	1	1168	1291	10967
Mashonaland Central	1772	1841	74	68	126	2	305	458	4646
Mashonaland East	2592	2610	207	145	341	6	1104	1238	8243
Mashonaland West	1990	2009	157	156	239	0	975	1024	6550
Masvingo	3285	3323	121	106	255	19	961	907	8977
Matabeleland North	1279	1404	16	17	87	0	315	443	3561
Matabeleland South	1303	1398	42	45	128	7	642	632	4197
Midlands	2576	2676	111	115	327	0	949	1164	7918
Grand Total	18888	19180	875	798	2665	56	8632	10353	61447

9.5 Access to water in schools

Table 131: Number of Primary Schools with Access to Water and Water Sources by Province

Province	Total Primary	With Water Source		Without Water Source		Water Source							
		No	%	No	%	Borehole	Dam	Other	Piped Water	Protected Well	Stream/River	Unprotected well	Abstraction Spring
Bulawayo	152	152	100.00%	0	0.00%	55.26%	0.66%	0.66%	91.45%	0.00%	0.00%	0.00%	0.00%
Harare	253	248	98.02%	5	1.98%	86.56%	0.40%	0.00%	67.98%	3.16%	0.00%	0.79%	0.00%
Manicaland	877	858	97.83%	19	2.17%	70.13%	1.25%	3.42%	14.25%	15.17%	10.49%	5.47%	0.11%
Mashonaland Central	508	500	98.43%	8	1.57%	80.12%	4.53%	0.98%	8.27%	8.07%	4.92%	5.71%	0.20%
Mashonaland East	744	727	97.72%	17	2.28%	77.42%	2.96%	0.54%	11.42%	22.85%	4.30%	4.57%	0.00%
Mashonaland West	751	723	96.27%	28	3.73%	78.03%	3.60%	1.60%	12.92%	8.66%	3.20%	3.60%	0.00%
Masvingo	870	784	90.11%	86	9.89%	71.49%	5.29%	0.69%	12.87%	4.94%	6.21%	4.83%	0.00%
Matabeleland North	616	601	97.56%	15	2.44%	72.73%	2.44%	2.44%	10.71%	5.52%	7.95%	5.68%	0.16%
Matabeleland South	512	480	93.75%	32	6.25%	72.66%	2.73%	2.15%	9.38%	2.73%	7.23%	4.10%	0.00%
Midlands	840	792	94.29%	48	5.71%	67.50%	4.05%	1.90%	16.55%	9.40%	7.02%	6.31%	0.00%
Grand Total	6123	5865	95.79%	258	4.21%	73.43%	3.17%	1.63%	16.74%	9.59%	6.08%	4.75%	0.05%

Table 132: Number of Secondary Schools with Access to Water Sources by Province

Province	No of Secondary	With Water Source		Without Water Source		Water Source							
		No	%	No	%	Borehole	Dam	Other	Piped Water	Protecte d Well	Stream/River	Unprotected well	Abstraction Spring
Bulawayo	80	80	100.00%	0	0.00%	38.75%	0.00%	0.00%	95.00%	0.00%	0.00%	0.00%	0.00%
Harare	232	228	98.28%	4	1.72%	64.22%	0.00%	1.29%	64.66%	1.72%	0.00%	1.72%	0.00%
Manicaland	436	426	97.71%	10	2.29%	68.12%	1.61%	2.29%	22.25%	6.42%	8.03%	6.42%	0.00%
Mashonaland Central	245	234	95.51%	11	4.49%	79.18%	0.82%	0.41%	17.14%	2.86%	2.04%	2.86%	0.00%
Mashonaland East	372	350	94.09%	22	5.91%	69.62%	3.49%	0.00%	13.17%	5.91%	2.69%	5.91%	0.00%
Mashonaland West	379	367	96.83%	12	3.17%	74.67%	2.37%	1.32%	18.73%	5.01%	4.49%	5.01%	0.26%
Masvingo	354	327	92.37%	27	7.63%	73.45%	4.80%	0.85%	20.34%	4.24%	5.65%	4.24%	0.00%
Matabeleland North	198	193	97.47%	5	2.53%	70.20%	2.53%	0.51%	19.19%	7.58%	6.06%	7.58%	0.00%
Matabeleland South	162	157	96.91%	5	3.09%	75.31%	1.23%	1.23%	20.99%	1.23%	5.56%	1.23%	0.00%
Midlands	372	349	93.82%	23	6.18%	63.17%	3.23%	1.61%	24.19%	7.53%	5.91%	7.53%	0.00%
Grand Total	2830	2711	95.80%	119	4.20%	69.58%	2.37%	1.10%	25.41%	4.95%	4.59%	4.95%	0.04%

Table 133: Percentage Primary Schools by Access to Water and Use of Water

Province	Total Primary	Distance from Source			Safe to Drink		Sufficient		Consistently Available		Water is Treated		Used by the community	
		< 500 metres	> 500 metres	% > 500 meter	No	%	No	%	No	%	No	%	No	%
Bulawayo	152	150	2	1.32%	150	98.68%	145	95.39%	142	93.42%	141	92.76%	28	18.42%
Harare	253	229	22	8.70%	246	97.23%	235	92.89%	227	89.72%	229	90.51%	118	46.64%
Manicaland	877	670	205	23.38%	751	85.63%	546	62.26%	592	67.50%	180	20.52%	613	69.90%
Mashonaland Central	508	374	132	25.98%	437	86.02%	308	60.63%	316	62.20%	84	16.54%	376	74.02%
Mashonaland East	744	583	155	20.83%	691	92.88%	539	72.45%	524	70.43%	147	19.76%	498	66.94%
Mashonaland West	751	556	185	24.63%	635	84.55%	486	64.71%	484	64.45%	213	28.36%	525	69.91%
Masvingo	870	584	284	32.64%	751	86.32%	556	63.91%	535	61.49%	193	22.18%	669	76.90%
Matabeleland North	616	420	188	30.52%	491	79.71%	389	63.15%	374	60.71%	131	21.27%	372	60.39%
Matabeleland South	512	329	179	34.96%	431	84.18%	342	66.80%	335	65.43%	68	13.28%	345	67.38%
Midlands	840	591	245	29.17%	692	82.38%	514	61.19%	518	61.67%	183	21.79%	561	66.79%
Grand Total	6123	4486	1597	26.08%	5275	86.15%	4060	66.31%	4047	66.10%	1569	25.62%	4105	67.04%

Table 134: Percentage Secondary Schools by Access to Water and Use of Water

Province	Total Secondary	Distance from Source			Safe to Drink		Sufficient		Consistently Available		Water is Treated		Used by the community	
		< 500 metres	> 500 metres	% > 500 meter	No	%	No	%	No	%	No	%	No	%
Bulawayo	80	76	3	3.75%	78	97.50%	77	96.25%	76	95.00%	74	92.50%	11	13.75%
Harare	232	219	10	4.31%	222	95.69%	217	93.53%	206	88.79%	207	89.22%	97	41.81%
Manicaland	436	347	87	19.95%	378	86.70%	296	67.89%	315	72.25%	121	27.75%	257	58.94%
Mashonaland Central	245	187	54	22.04%	219	89.39%	147	60.00%	161	65.71%	63	25.71%	166	67.76%
Mashonaland East	372	292	74	19.89%	326	87.63%	240	64.52%	238	63.98%	84	22.58%	215	57.80%
Mashonaland West	379	280	97	25.59%	330	87.07%	253	66.75%	258	68.07%	93	24.54%	237	62.53%
Masvingo	354	259	94	26.55%	331	93.50%	231	65.25%	221	62.43%	100	28.25%	227	64.12%
Matabeleland North	198	145	52	26.26%	151	76.26%	126	63.64%	120	60.61%	38	19.19%	96	48.48%
Matabeleland South	162	120	40	24.69%	143	88.27%	114	70.37%	108	66.67%	33	20.37%	75	46.30%
Midlands	372	266	101	27.15%	304	81.72%	231	62.10%	243	65.32%	103	27.69%	195	52.42%
Grand Total	2830	2191	612	21.63%	2482	87.70%	1932	68.27%	1946	68.76%	916	32.37%	1576	55.69%

9.6 Health and Feeding

Table 135: Percentage of Primary School with Health Teachers, Health Clubs and Support Feeding Programmes by Province

	Total Primary	Trained Health Teacher	Supplementary Feeding Programme	School Health Club	% Trained Health Teacher	% Supplementary Feeding	% Functioning Health club
Bulawayo	152	102	84	107	67.11%	55.26%	70.39%
Harare	253	98	184	135	38.74%	72.73%	53.36%
Manicaland	877	594	727	652	67.73%	82.90%	74.34%
Mashonaland Central	508	277	475	307	54.53%	93.50%	60.43%
Mashonaland East	744	324	610	418	43.55%	81.99%	56.18%
Mashonaland West	751	406	629	540	54.06%	83.75%	71.90%
Masvingo	870	580	747	654	66.67%	85.86%	75.17%
Matabeleland North	616	362	498	468	58.77%	80.84%	75.97%
Matabeleland South	512	396	467	439	77.34%	91.21%	85.74%
Midlands	840	393	703	545	46.79%	83.69%	64.88%
Grand Total	6123	3532	5124	4265	57.68%	83.68%	69.66%

Table 136: Percentage of Secondary Schools with Health Teachers, Health Clubs and Support Feeding Programmes by School Level and Province

Province	Total Secondary	Trained Health Teacher	Supplementary Feeding Programme	School Health Club	% Trained Health Teacher	% Supplementary Feeding	% Functioning Health club
Bulawayo	80	34	6	45	42.50%	7.50%	56.25%
Harare	232	58	20	87	25.00%	8.62%	37.50%
Manicaland	436	271	31	307	62.16%	7.11%	70.41%
Mashonaland Central	245	112	78	131	45.71%	31.84%	53.47%
Mashonaland East	372	127	89	182	34.14%	23.92%	48.92%
Mashonaland West	379	145	57	211	38.26%	15.04%	55.67%
Masvingo	354	198	51	239	55.93%	14.41%	67.51%
Matabeleland North	198	98	21	127	49.49%	10.61%	64.14%
Matabeleland South	162	106	20	118	65.43%	12.35%	72.84%
Midlands	372	143	83	207	38.44%	22.31%	55.65%
Grand Total	2830	1292	456	1654	45.65%	16.11%	58.45%

9.7 Sporting and Specialist Facilities

Table 137: Number of Facilities and Total Capacity at Primary Level

Room facility	Number	Total capacity
Admin Block	2494	16055
Agriculture	229	10255
Art and Craft room	254	11582
Biology Laboratory	6	64
Building	510	19235
Chemistry Laboratory	3	76
Computer room	1187	41067
Cookery	113	2830
Hall	301	100637
Int Science Laboratory	5	36
Library	857	29619
Metalwork	9	427
Needle work	74	2781
Ordinary classrooms	69234	2585841
Physics Laboratory	15	1659
Staff room	927	17751
Tool store	2041	16876
Tuckshop	390	5809
woodwork	68	2680
Music room	313	7110
Grand Total	79030	2872390

Table 138: Type and Number of Facilities

Rom/Facility	Number
Audiological room	29
Basketball Court	1115
Braille Laboratory	11
Culture Centre	1619
Dining Room	226
Gymnasium	57
Kitchen	1757
Netball Court	7434
Pavilion	154
Sick bay room	444
Sports field(e.g football)	7386
Squash court	51
Strong room	1999
Swimming pool	264
Tennis Court	664
Therapy room	46
Volleyball Court	5923

Table 139: Number of Facilities at Secondary School

Facility Type	Number	Total capacity
Admin Block	8278	9376
Biology Laboratory	3480	3552
Chemistry Laboratory	3226	3700
Hall	48329	56227
Int Science Laboratory	24096	25752
Library	15926	18016
Physics Laboratory	3205	3836
Staff room	13527	13290
Tool store	5916	7198
Tuckshop	8505	10165
Agriculture	10842	19438
Art and Craft room	3156	3881
Building	2773	10504
Computer room	15326	24434
Cookery	3900	7740
Metalwork	3004	4111
Music room	1139	1949
Needle work	8745	18532
Ordinary classrooms	355831	608889
woodwork	4256	6869

Table 140: Type and Number of Facilities

Room Facility	Number
Audiological room	14
Braille Laboratory	7
Culture Centre	526
Dining Room	2878
Kitchen	748
Sick bay room	337
Strong room	1086
Therapy room	13
Basketball Court	1251
Gymnasium	127
Netball Court	7402
Pavilion	283
Sports field(e.g football)	14907
Squash court	362
Swimming pool	249
Tennis Court	1167
Volleyball Court	6489

9.8 ICT, Computer Access, Use and Connectivity

Table 141: Primary School Computers for Learners, Teachers and Administration

Province	Total Schools	Schools with computers	schools with computers for learners	Total Functional Computers	Computers for learners	Learners	% of schools with computers	% of schools with computers for learners	Average computers per school	Learners per computer
Bulawayo	152	135	113	3280	2662	125321	88.82%	74.34%	24	47
Harare	253	234	205	7609	5765	300944	92.49%	81.03%	33	52
Manicaland	877	871	211	4639	3845	528574	99.32%	24.06%	5	137
Mashonaland Central	508	503	84	1895	1405	309084	99.02%	16.54%	4	220
Mashonaland East	744	707	174	2921	2151	361814	95.03%	23.39%	4	168
Mashonaland West	751	742	144	2743	1978	387165	98.80%	19.17%	4	196
Masvingo	870	856	221	2850	2029	451712	98.39%	25.40%	3	223
Matabeleland North	616	596	57	2194	1055	214789	96.75%	9.25%	4	204
Matabeleland South	512	508	144	1835	1415	187181	99.22%	28.13%	4	132
Midlands	840	791	147	3152	2231	433882	94.17%	17.50%	4	194
Grand Total	6123	5943	1500	33118	24536	3300466	97.06%	24.50%	6	135

Table 142: Secondary Schools Computers for Learners, Teachers and Administration

Province	Total Schools	Schools with computers	schools with computers for learners	Total Functional Computers	Computers for learners	Learners	% of schools with computers	% of schools with computers for learners	Average computers per school	Learners per computer
Bulawayo	80	75	61	2375	1675	55350	93.75%	76.25%	30	33
Harare	232	216	187	6674	4543	121633	93.10%	80.60%	29	27
Manicaland	436	347	230	5834	4523	167800	79.59%	52.75%	13	37
Mashonaland Central	245	181	98	2574	1915	84634	73.88%	40.00%	11	44
Mashonaland East	372	287	167	4162	3165	130707	77.15%	44.89%	11	41
Mashonaland West	379	274	153	3273	2382	120260	72.30%	40.37%	9	50
Masvingo	354	290	188	3899	2986	139163	81.92%	53.11%	11	47
Matabeleland North	198	130	89	1680	1256	58717	65.66%	44.95%	8	47
Matabeleland South	162	138	112	2644	2023	55303	85.19%	69.14%	16	27
Midlands	372	302	181	4367	3242	141758	81.18%	48.66%	12	44
Grand Total	2830	2240	1466	37482	27710	1075325	79.15%	51.80%	13	39

9.9 Seating and Writing Places

Table 143: Primary School Seating and Writing Places by Province

Province	Seating Places				Writing Places			
	Seating Places	Pupil to Seating Ratio	No Required	% Pupils without seating	Writing Places	Pupil to writing ratio	No. Required	% pupils without writing
Bulawayo	105140	1.19	20181	16.10%	87928	1.43	37393	29.84%
Harare	252359	1.19	48585	16.14%	212684	1.41	88260	29.33%
Manicaland	365719	1.45	162855	30.81%	331680	1.59	196894	37.25%
Mashonaland Central	196369	1.57	112715	36.47%	187236	1.65	121848	39.42%
Mashonaland East	258343	1.40	103471	28.60%	236606	1.53	125208	34.61%
Mashonaland West	249902	1.55	137263	35.45%	217916	1.78	169249	43.71%
Masvingo	302918	1.49	148794	32.94%	265587	1.70	186125	41.20%
Matabeleland North	143050	1.50	71739	33.40%	121051	1.77	93738	43.64%
Matabeleland South	156881	1.19	30300	16.19%	137013	1.37	50168	26.80%
Midlands	279405	1.55	154477	35.60%	244921	1.77	188961	43.55%
Grand Total	2310086	1.43	990380	30.01%	2042622	1.62	1257844	38.11%

Table 144: Secondary School Seating and Writing Places

Province	Seating Places				Writing Places			
	Seating Places	Pupil to Seating Ratio	No Required	% Pupils without seating	Writing Places	Pupil to writing ratio	No. Required	% pupils without writing
Bulawayo	51976	1.06	3374	6.10%	51350	1.08	4000	7.23%
Harare	123742	0.98	-2109	-1.73%	121257	1.00	376	0.31%
Manicaland	151076	1.11	16724	9.97%	146632	1.14	21168	12.62%
Mashonaland Central	68516	1.24	16118	19.04%	63817	1.33	20817	24.60%
Mashonaland East	107517	1.22	23190	17.74%	107180	1.22	23527	18.00%
Mashonaland West	96199	1.25	24061	20.01%	94931	1.27	25329	21.06%
Masvingo	118643	1.17	20520	14.75%	116236	1.20	22927	16.47%
Matabeleland North	45700	1.28	13017	22.17%	44736	1.31	13981	23.81%
Matabeleland South	48808	1.13	6495	11.74%	47090	1.17	8213	14.85%
Midlands	120598	1.18	21160	14.93%	119534	1.19	22224	15.68%
Grand Total	932775	1.15	142550	13.26%	912763	1.18	162562	15.12%

Chapter 10: Non-Formal Education

Table 145: Table 146: Enrolment in NFE Programmes by Province, Sex and Level

Province	Primary			Secondary			Grand Total	% Total Primary	% Total Secondary
	M	F	T	M	F	T			
Bulawayo	2271	3126	5397	1729	3346	5075	10472	3.67%	6.40%
Harare	2819	2952	5771	3070	3494	6564	12335	3.92%	8.27%
Manicaland	11667	17252	28919	4029	5686	9715	38634	19.65%	12.24%
Mashonaland Central	7148	8733	15881	2633	3110	5743	21624	10.79%	7.24%
Mashonaland East	7085	7089	14174	3382	4249	7631	21805	9.63%	9.62%
Mashonaland West	6135	9547	15682	4339	4405	8744	24426	10.65%	11.02%
Masvingo	10936	14225	25161	8415	10541	18956	44117	17.09%	23.89%
Matabeleland North	6181	9830	16011	2576	4018	6594	22605	10.88%	8.31%
Matabeleland South	4902	8403	13305	1915	3268	5183	18488	9.04%	6.53%
Midlands	3405	3501	6906	1999	3135	5134	12040	4.69%	6.47%
Grand Total	62549	84658	147207	34087	45252	79339	226546	100.00%	100.00%

Table 147: Primary Level Enrolment by NFE level and Sex

NFE Level	M	F	Grand Total	% Female	% Total
Basic Literacy	5733	7986	13719	58.21%	18.85%
Fit For Life	5128	5242	10370	50.55%	14.25%
Functional Literacy	11556	21713	33269	65.26%	45.71%
ZABEC 1	3547	4152	7699	53.93%	10.58%
ZABEC 2	1638	2062	3700	55.73%	5.08%
ZABEC 3	1800	2221	4021	55.24%	5.53%
Grand Total	29402	43376	72778	59.60%	100.00%

Table 148: Primary Level Enrolment in NFE Programmes by Province, Registration Status and Sex

nfeLevel	Registered			Satellite		
	M	F	T	M	F	T
Basic Literacy	5099	7216	12315	634	770	1404
Fit For Life	4668	4858	9526	460	384	844
Functional Literacy	10860	20499	31359	696	1214	1910
ZABEC 1	3268	3762	7030	279	390	669
ZABEC 2	1426	1780	3206	212	282	494
ZABEC 3	1574	1895	3469	226	326	552
Grand Total	26895	40010	66905	2507	3366	5873

Table 149: Secondary Level Enrolment by NFE level and Sex

NFE Level	M	F	Grand Total	% Female	% Total
Fit For Life	2690	2417	5107	47.33%	13.54%
Functional Literacy	2752	3677	6429	57.19%	17.05%
PTCEC	10911	15261	26172	58.31%	69.41%
Grand Total	16353	21355	37708	56.63%	100.00%

Table 150: Secondary Level Enrolment in NFE Programmes by Province, Registration Status and Sex

NFE Level	Registered			Satellite		
	M	F	T	M	F	T
Fit For Life	2366	2075	4441	324	342	666
Functional Literacy	2369	2899	5268	383	778	1161
PTCEC	9409	13471	22880	1502	1790	3292
Grand Total	14144	18445	32589	2209	2910	5119

Chapter 11: Learning Outcomes

Table 151: Examination Pass Rates for Grade7, O' Level and A' Level from 2014-2017

Year	Grade 7				O level				A level			
	Pass rates				Pass rates				Pass rates			
	M	F	T	GPI	M	F	T	GPI	M	F	T	GPI
2014	34.46%	38.71%	36.59%	1.12	24.23%	20.53%	22.41%	0.85	80.55%	87.16%	83.34%	1.08
2015	39.39%	44.68%	42.07%	1.13	30.50%	25.35%	27.89%	0.83	85.50%	90.72%	87.75%	1.06
2016	40.88%	45.66%	43.31%	1.12	32.22%	27.83%	29.98%	0.86	86.50%	91.60%	88.73%	1.06
2017	42.61%	46.81%	44.76%	1.10	30.66%	26.85%	28.71%	0.88	83.49%	89.20%	86.05%	1.07

Table 152: Grade 7 Examination Pass Rates 2017 by Province and Sex

Province	Candidates			Passed			Pass rates			
	M	F	T	M	F	T	M	F	T	GPI
Bulawayo	6637	7095	13732	4690	5513	10203	70.66%	77.70%	74.30%	1.10
Harare	17321	18380	35702	12199	13831	26031	70.43%	75.25%	72.91%	1.07
Manicaland	23774	23793	47568	9845	10588	20433	41.41%	44.50%	42.96%	1.07
Mashonaland Central	13739	14301	28041	4708	5161	9870	34.27%	36.09%	35.20%	1.05
Mashonaland East	18331	18546	36878	6543	7395	13938	35.69%	39.87%	37.79%	1.12
Mashonaland West	18966	18996	37962	6082	6803	12885	32.07%	35.81%	33.94%	1.12
Masvingo	19340	21042	40388	9097	10208	19309	47.04%	48.51%	47.81%	1.03
Matabeleland North	9573	10604	20178	2008	3166	5174	20.98%	29.86%	25.64%	1.42
Matabeleland South	8552	8977	17529	2595	3675	6270	30.34%	40.94%	35.77%	1.35
Midlands	19901	20966	40868	8767	9824	18592	44.05%	46.86%	45.49%	1.06
National	156134	162700	318846	66534	76164	142705	42.61%	46.81%	44.76%	1.10

Table 153: O' Level Examination Pass Rates 2017 by Province and Sex

Province	Candidates			Passed			Pass rates			
	M	F	T	M	F	T	M	F	T	GPI
Bulawayo	3942	4852	8795	1185	1499	2684	30.06%	30.89%	30.52%	1.03
Harare	8108	8733	16842	2455	2742	5197	30.28%	31.40%	30.86%	1.04
Manicaland	13524	12975	26500	4283	3841	8125	31.67%	29.60%	30.66%	0.93
Mashonaland Central	6550	5917	12467	1796	1209	3005	27.42%	20.43%	24.10%	0.75
Mashonaland East	9942	10063	20005	3139	2976	6115	31.57%	29.57%	30.57%	0.94
Mashonaland West	9166	8361	17527	2465	1800	4265	26.89%	21.53%	24.33%	0.80
Masvingo	10774	10588	21363	3794	3054	6848	35.21%	28.84%	32.06%	0.82
Matabeleland North	3506	5108	8614	951	1035	1986	27.12%	20.26%	23.06%	0.75
Matabeleland South	3207	4661	7868	913	1131	2044	28.47%	24.27%	25.98%	0.85
Midlands	9732	10896	20629	3070	2775	5845	31.55%	25.47%	28.33%	0.81
National	78451	82154	160610	24051	22062	46114	30.66%	26.85%	28.71%	0.88

Table 154: A' Level Examination Pass Rates 2017 by Province and Sex

Province	Candidates			Passed			Pass rates			
	M	F	T	M	F	T	M	F	T	GPI
Bulawayo	1342	1466	2808	1056	1255	2311	78.69%	85.61%	82.30%	1.09
Harare	2850	2533	5383	2219	2223	4442	77.86%	87.76%	82.52%	1.13
Manicaland	3953	3110	7063	3388	2811	6199	85.71%	90.39%	87.77%	1.05
Mashonaland Central	1473	1040	2513	1269	949	2218	86.15%	91.25%	88.26%	1.06
Mashonaland East	2235	1949	4185	1989	1805	3795	88.99%	92.61%	90.68%	1.04
Mashonaland West	2188	1507	3695	1761	1317	3078	80.48%	87.39%	83.30%	1.09
Masvingo	3473	2367	5840	3057	2180	5237	88.02%	92.10%	89.67%	1.05
Matabeleland North	664	705	1369	528	589	1117	79.52%	83.55%	81.59%	1.05
Matabeleland South	907	927	1834	715	793	1508	78.83%	85.54%	82.22%	1.09
Midlands	2805	2226	5031	2294	1982	4276	81.78%	89.04%	84.99%	1.09
National	21890	17830	39721	18276	15904	34181	83.49%	89.20%	86.05%	1.07

Description of the Main Indicators Used in this Publication

% Schools with facilities

Definition: Percentage of the total number of schools reporting a particular facility. Facilities reported in this report include: % schools with Tap Water; % schools with Grid Electricity; % schools with Borehole; % schools with Protected Well; % schools with Stream/ River; % schools with Tap Water.

Purpose: To show the extent of coverage of a particular asset in schools.

Calculation method: Divide the number of schools of a specific type reporting a facility by the total number of schools of that type multiplied by 100.

Average Number of Years taken by Primary Graduates

Definition: Average number of years the system is taking to produce a primary school (7 years) or secondary school (6 years) graduate. A graduate is a learner who successfully completes a level of education i.e. primary. The years input per graduate is obtained by dividing the total number of learner-years spent by the cohort by the total number of graduates.

Unit of Measurement: Years input per graduate

Discussion: The input per graduate should be compared to the ideal number, which is simply the duration of the education cycle. More years studied per graduate indicates wastage in the system that may be due to either dropouts or repeaters.

Coefficient of Efficiency at Primary Level (Input-Output Ratio)

Definition: The ideal (optimal) number of learner-years required (i.e. in the absence of repetition and drop-out) to produce a number of graduates from a given learner cohort in primary education expressed as a percentage of the actual number of learner-years spent to produce the same number of graduates. One school year spent in a grade by a learner is counted as one learner-year. The coefficient of efficiency is a synthetic indicator of the internal efficiency of an education system. It summarises the consequences of repetition and dropout on the efficiency of the educational process in producing graduates. The coefficient of efficiency is the reciprocal of the Input-Output ratio, which is often used as an alternative indicator of internal efficiency.

Unit of Measurement: Coefficient of primary cycle, expressed as a percentage of the actual number of learner-years

Discussion: A coefficient of efficiency approaching 100 per cent indicates a high overall level of internal efficiency and little wastage due to repetition and drop out. A coefficient of efficiency that is less than 100 per cent signals inefficiency due to grade repetition and dropout. Given that this indicator is usually derived using cohort analysis models that are based on a number of assumptions, and owing to its highly synthetic nature, care should be taken in making comparisons across education systems. From a conceptual viewpoint, economic efficiency and resource utilisation are optimal when most learners graduate within the prescribed duration of the primary or secondary cycle, but this does not necessarily imply achievement of the expected learning outcomes. Also, according to this calculation method, early dropout (i.e. in the lower grades)

reduces internal efficiency less than late dropout (i.e. in the higher grades). This means that efficiency from the economic point of view can be in contradiction with educational objectives that aim to retain learners in school as long as possible or at least until they reach the higher grades in the primary cycle when they would have acquired the prescribed basic knowledge and skills

Dropout Rate

Definition: Proportion of learners from a cohort enrolled in a given grade at a given school year who are no longer enrolled in the following school year.

Purpose: To measure the phenomenon of learners from a cohort leaving school without completion, and its effect on the internal efficiency of educational systems. In addition, it is one of the key indicators for analysing and projecting learner flows from grade to grade within the educational cycle.

Calculation method: Dropout rate by grade is calculated by subtracting the sum of promotion rate and repetition rate from 100 in the given school year. For cumulative dropout rate in primary education, it is calculated by subtracting the survival rate from 100 at a given grade (see survival rate).

Gender Gap

Definition: The percentage of a male group less the percentage of a female group. This indicator can be applied to any relative ratio such as GER, NER, NIR, AIR, ASER, % male, % female etc.

Purpose: The Gender Gap represents the relative difference between the group of males and females. The larger the Gender Gap the greater the bias towards the male group.

Calculation method: The Percentage of a Male group (as a percentage of the total number) less the percentage of a Female group (as a percentage of the total number).

Gender Parity Index (GPI)

Definition: Ratio of female to male values of a given indicator. A GPI of 1 indicates parity between sexes. In the case of learners we calculate GPI in terms of GER. Therefore $GPI = GER \text{ Female} / GER \text{ Male}$. The Gender Parity Index can be applied to raw data or relative data such as NER, GER, Learner to Teacher Ratios or other relative amounts.

Purpose: The Gender Parity Index represents the relative difference between a group of females and males. A GPI of greater than one represents bias towards the female group. A GPI of less than one represents a bias towards the male group.

Calculation method: Divide the number or percentage of females by the number or percentage of males.

Gross Enrolment Rate (GER)

Definition: Enrolment at a given level of education, regardless of age, expressed as a percentage of the population in the theoretical school-age group corresponding to this level of education. For the tertiary level, the population used is the five-year age group following on from the secondary school theoretical leaving age.

Purpose: Gross Enrolment Ratio is widely used to show the general level of participation in a given level of education. It indicates the capacity of the education system to enrol learners of a particular age-group. It is used as a substitute indicator to net enrolment rate (NER) when data on enrolment by single years of age are not available. Furthermore, it can also be a complementary indicator to NER by indicating the extent of over-aged and under-aged enrolment.

Calculation method: Divide the number of learners (or learners) enrolled in a given level of education regardless of age by the population of the age-group which officially corresponds to the given level of education, and multiply the result by 100.

Net enrolment Rate (NER)

Definition: Enrolment of the theoretical school-age group for a given level of education, expressed as a percentage of the total population in that age-group.

Purpose: To show the extent of participation in a given level of education of children and youths belonging to the official age-group corresponding to the given level of education.

Calculation method: Divide the number of learners enrolled who are of the official age-group for a given level of education by the population for the same age-group and multiply the result by 100.

School Teachers having Required Academic Qualifications

Definition: The number of school teachers with at least the minimum academic qualifications required by MoPSE for teaching at a certain level of the education system (ECD, Primary or Secondary), expressed as a percentage of the total number of primary school teachers. This indicator measures the proportion of primary school teachers who meet the basic requirement in terms of academic qualifications as specified by the authorities. It indicates the general quality of human capital involved in teaching in education. Teachers are persons who, in their professional capacity, guide and direct learners' learning experiences in gaining the knowledge, attitudes and skills that are stipulated in a defined curriculum programme.

Unit of Measurement: Teachers with at least minimum academic qualifications as a percentage of the total number of primary school teachers

Discussion: A high percentage of teachers having the required academic qualifications denotes the availability of academically qualified teachers and the general quality of the teaching force. Teachers' academic qualifications, together with pre-service or in-service teacher training, correlate strongly and consistently with learners' scholastic performance, which of course is also affected by other factors, such as the experience and status of teachers, teaching methods, teaching materials and the quality of classroom conditions.

Learner to Teacher Ratio (LTR)

Definition: Average number of learners per teacher at a specific level of education in a given school-year. Teachers are defined as persons whose professional activity involves the transmission of knowledge, attitudes and skills that are stipulated in a formal curriculum programme to learners enrolled in a formal educational institution.

Calculation Method: Divide the total number of learners enrolled at the specified level of education by the number of teachers at the same level.

Core Textbooks per subject per learner

Definition: The number of core textbooks for each core subject which are available to each learner in either primary or secondary schools. At primary level the core textbooks are English, Mathematics, Environmental Science, and either Shona or Ndebele. In secondary schools core textbooks are English, Mathematics, Integrated Science, Geography, History, and either Shona or Ndebele.

Calculation Method: Total number of core textbooks are divided by the number of subjects (Primary:4, Secondary 6) and this figure is also divided by the number of learners.

Repetition Rate by Grade or Form

Definition: Proportion of learners enrolled in a given grade in a given school year who study in the same grade the following school year. This indicator measures the phenomenon of learners repeating a grade, and is one of the measures of the internal efficiency of the primary school education cycle

Unit of Measurement: Percentage of repeaters in a grade to enrolment in that grade the previous year

Discussion: Repetition rates should ideally approach zero per cent. High repetition rates reveal problems in the internal efficiency of the education system and possibly reflect a poor level of instruction. When compared across grades, the patterns can indicate specific grades with relatively higher repetition rates, hence requiring more in-depth study of the causes and possible remedies. In some cases, low repetition rates merely reflect policies or practices of automatic promotion and may reflect poorly on the quality of a system. Repetition rate plays an important role in measuring the efficiency of the education system. The maximum repetition rate and the number of grade repetitions allowed may in some cases be determined by the education authorities in order to cope with limited capacity at certain grade levels and to increase the flow of learners through the education cycle

School Teachers who are Certified (Trained) to Teach According to National Standards

Definition: The number of school teachers who are certified to have received the minimum organised teacher-training (pre-service or in-service) required for teaching in education, expressed as a percentage of the total number of school teachers at a particular level of the education system. This indicator measures the proportion of primary school teachers trained in pedagogical skills, according to national standards, to effectively teach and use the available instructional materials. It reveals also a state's commitment to invest in the development of its human capital involved in teaching activities. Teachers are persons who, in their professional capacity, guide and direct learners' learning experiences in gaining the knowledge, attitudes and skills that are stipulated in a defined curriculum programme.

Unit of Measurement: Percentage to total primary school teachers

Discussion: A high percentage of teachers certified to teach in primary schools implies that a majority of the teaching force is trained and has the necessary pedagogical skills to teach and use the available instructional materials in an effective manner. This indicator does not take into account differences in teachers' experiences and status, teaching methods, teaching materials and variations in classroom conditions -- all being factors that also affect the quality of teaching/learning. The details of the training imparted, duration, training agency etc. may also be analysed along with the indicator.

Learner Enrolment

Learner enrolment is defined as the total number of learners (total, female) enrolled in a particular level of education (primary, secondary, tertiary). For secondary education, learner enrolment includes enrolment in general programmes as well as enrolment in technical and vocational programs. (Data Source: UNESCO Institute for Statistics)

Survival Rate to End Education Cycle

Definition: Percentage of a cohort of learners who enrolled in the first grade of a level of education in a given school-year and who eventually reach the final year (or target year). Its purpose is to assess the "holding power" and internal efficiency of an education system. The survival rate to final year indicates the proportion of a learner cohort that completes each year and survives to final year. Conversely, it indicates the magnitude of dropout before final year.

Unit of Measurement: Percentage of a learner cohort actually reaching grade V

Discussion: Survival rate to final year of education is of particular interest because the completion of at least primary schooling is commonly considered a pre-requisite for a sustainable level of literacy. The distinction between survival rate with and without repetition is necessary to determine the extent of wastage due to dropout and repetition. Given that this indicator is usually estimated using cohort analysis models that are based on a number of assumptions, care should be taken in making comparisons across states

Teacher to Classroom Ratio (TCR)

Definition: Average number of teachers per classroom in a given school-year. A classroom is defined as a discrete room for formal instruction. The classroom should be in good condition and suitable for teaching. Classrooms do not include special rooms which are also sometimes classified as classrooms. This is because many special rooms cannot be used for general classroom use such as computer rooms.

Purpose: To define whether adequate classroom facilities exist in a school. A TCR of one teacher per classroom is ideal. However, this may vary depending on the schedule of teachers.

Calculation Method: Divide the total number of teachers at each level or type of education by the number of classrooms for each level or type of education.

Transition Rate

Definition: The number of learners (or learners) admitted to the first grade of a higher level of education in a given year, expressed as a percentage of the number of learners (or learners) enrolled in the final grade of the lower level of education in the previous year.

Purpose: To convey information on the degree of access or transition from one cycle or level of education to a higher one. Viewed from the lower cycle or level of education, it is considered as an output indicator, viewed from the higher educational cycle or level, it constitutes an indicator of access. It can also help in assessing the relative selectivity of an education system, which can be due to pedagogical or financial requirements.

Calculation method: Divide the number of new entrants in the first grade of the specified higher cycle or level of education by the number of learners who were enrolled in the final grade of the preceding cycle or level of education in the previous school year, and multiply by 100.

Un-enrolled children

Definition: Children in the official school age range who are not enrolled in school. This is the remainder after accounting for ASER.