

SECTION A

There are four questions in this section. Answer question 1 and any other two.

Read the following passage and answer the questions which follow

At schools, people who get the highest marks or who come first are the ones who receive the rewards. With God it is the one who has made the greatest effort. If we are to be given great or important tasks we must begin by first doing little jobs well. We prepare for the future success by working hard at what seems to be small and unimportant.

Gideon Gono is one of the greatest men in the Zimbabwe Banking Industry. He began his career by faithfully managing a small bank [CBZ] and was promoted to be the governor of the Reserve Bank of Zimbabwe [RBZ]. If you do small tasks faithfully now, God will make you responsible for big and important tasks in the future. This is the way you prepare for the future.

1

- a) What do we learn from this story?
- b) Why was Gideon Gono promoted to be the governor of the Reserve Bank of Zimbabwe?
- c) How do we prepare for our future success
- d) Which parable teaches us to be faithful with little so that we can be made in charge of more?

2.

- a) What is a church?
- b) Who described the church as the body and the bride?
Prophet Mohammed's wife was ...
- c) Children of Jews are taught about religion at the ...
- d) What do Muslims do during the month of Ramadan? 3.
- a) How many commandments were given to Moses?
- b) Israelites lived as slaves in a country called...
- c) List down any two plagues which King Pharaoh's nation faced.
- d) What did Moses do for the Israelites to cross the Red Sea from Egypt? 4.
- a) Mother Theresa is known for...
- b) Why do Moslems remove their shoes when entering their Mosque
- c) What do we mean when we say "God is just?"
- d) How was Stephen in the Bible killed?
- e) How was Jacob tricked by Laban?

SECTION B

*There are five questions in this section. Answer any **three***

5

- a) The world is regarded as a community. What is a community?
 - b) The main reason why SADC was formed was to....
 - c) Which UN organisation was formed to protect the rights of children?
 - d) Who was the Ndebele king who was tricked into signing the Rudd Concession?
 - e) Name one spirit mediums who was sentenced to death by British settler government?
- 5)What is a balanced diet?
- a) Give two basic sources of food.
 - b) Give one perishable food.
 - c) Give one pest which destroy the maize plant?

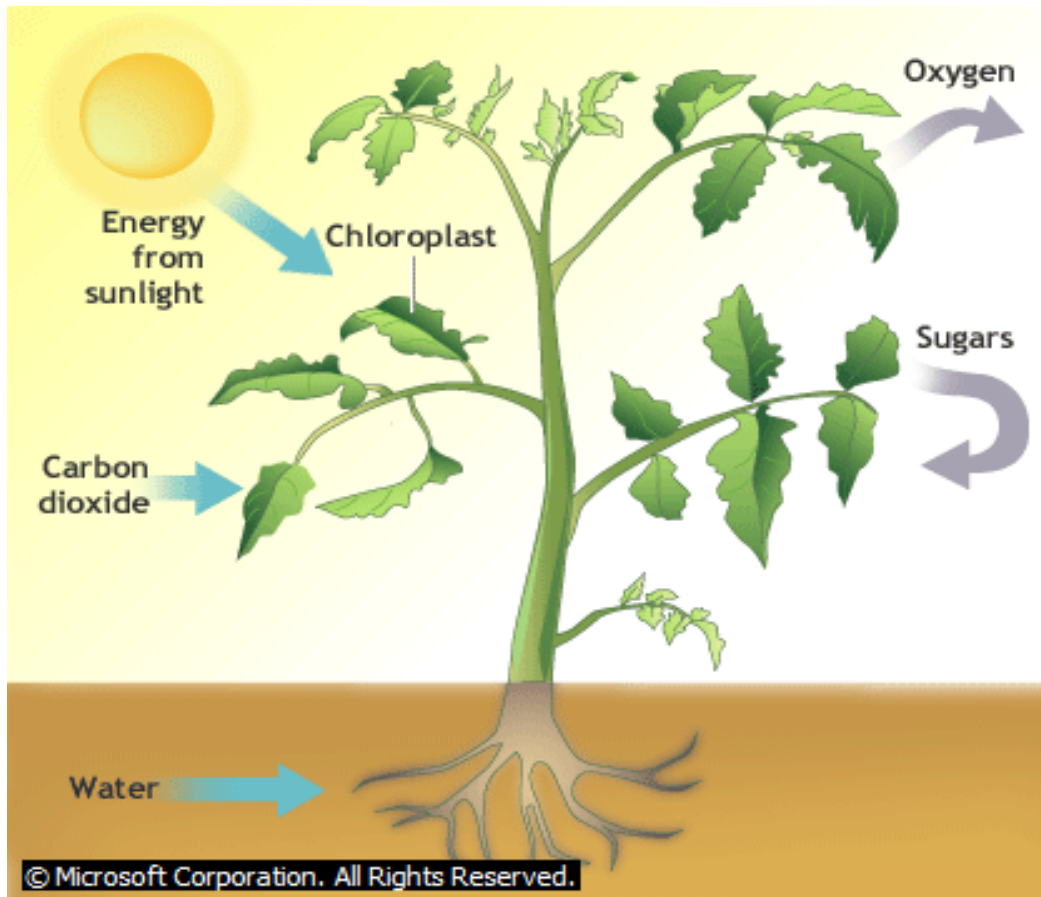
7.

- a) Why is it unhealthy for a man or woman to have multiple sexual partners?
- b) Where can one get one's blood tested for HIV?
- c) The best way for a child to protect himself/herself from getting HIV is
- d) Name any **two** drugs that are forbidden by the government from taking.

8 STUDY THE PICTURE BELOW AND ANSWER QUESTIONS THAT FOLLOW

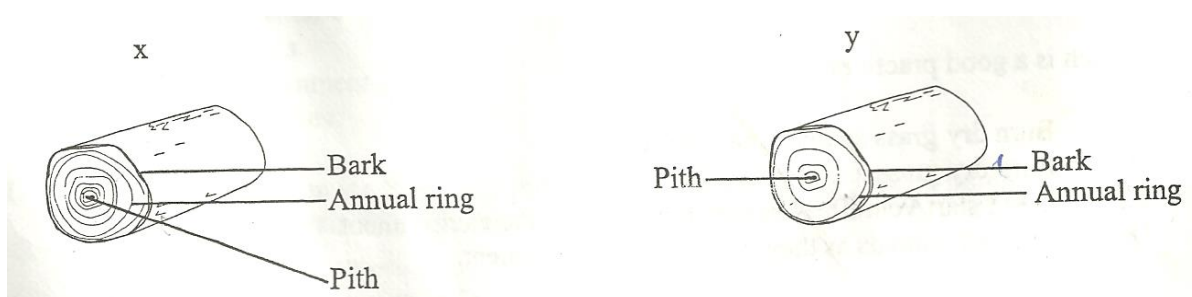


- a) Which type of shelter is this?
 - b) Who were buried in the shelter shown above?
 - c) Where do we find the tallest pyramid in Africa?
 - d) What was used as shelter by people long ago in Zimbabwe?
 - e) Why do shelters differ from place to place?
- a) What are local government (council) laws called?
 - b) Instead of Members of Parliament (MPs) local government is run by which people?
 - c) State three things that the council does with the rates it collects from the people



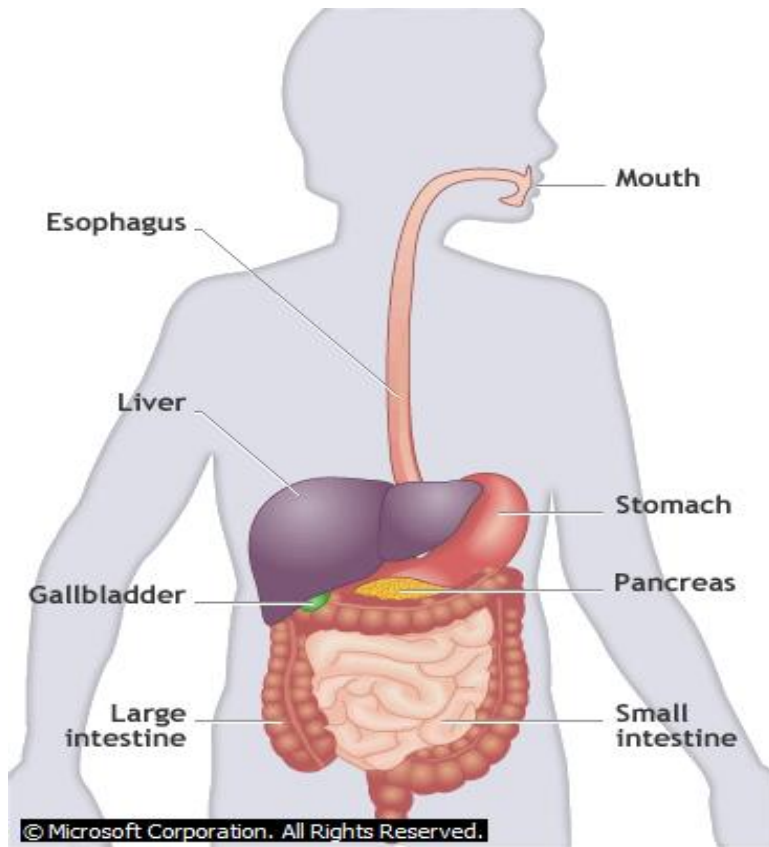
- Write down two products of photosynthesis?
- Which two raw materials are combined to form sugars?
- What is the importance of chlorophyll in photosynthesis?
- During respiration which gas is taken in by plants?
- The plant changes ----- energy from the sun to chemical energy in food.

11. STUDY THE PICTURE BELOW AND USE IT TO ANSWER THE FOLLOWING QUESTIONS



- Which of these trees produce flowers?
- Which of these trees grow fast
- Trees that are natural to the country are called.....tree
- Trees that lose their leaves during winter are known astree
- When is the national tree planting day in Zimbabwe?
- Give an example of ;

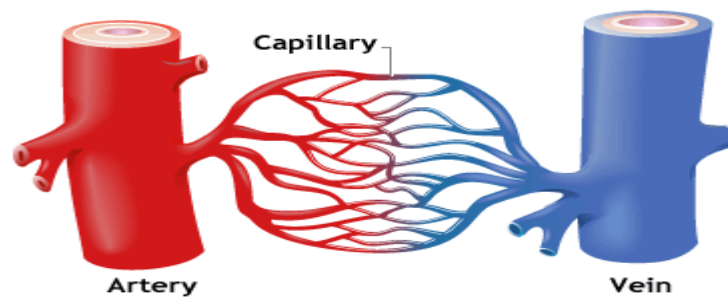
- i) A hardwood tree [1]
- ii) A softwood tree [1]



12. THE DIAGRAM ABOVE SHOWS THE HUMAN DIGESTIVE SYSTEM

- a) The liquid found in the mouth is called
- b) Chemical digestion of food starts in the
- c) Name one gut worm
- d) The absorption of dissolved food nutrients into the blood stream takes place in the..
- e) Why is water important in our diet?
- f) Undigested waste material is stored in which part?
- g) What is the importance of roughage in a diet?

13. STUDY THE DIAGRAM BELOW AND USE IT TO ANSWER QUESTIONS THAT FOLLOW



© Microsoft Corporation. All Rights Reserved.

- a) Which blood vessel carries blood from the heart
- b) Which vessel carries blood to the heart
- c) Why are capillaries so thin?
- d) Name two things that are distributed by the blood to the different parts of the body.
- e) Name one waste product that is transported by the blood from the different parts of the body to the lungs.