

**HOME BASED EDUCATION SECTION
GRADE 7 EXAMINATION 2020**

**GENERAL PAPER
PAPER 1**

SEPTEMBER 2020

Time: 2 hours

1. Read **all** the instructions carefully.
2. Do **not** open this booklet until you are told to do so by the invigilator.
3. If you **do not** understand the instructions ask the invigilator to explain them to you before you start.
4. Answer **all the** questions on the separate answer sheet.

This question paper comprises 10 printed pages.
Copyright: HOME BASED Education Section 2020

1. Where would you expect to find this symbol?

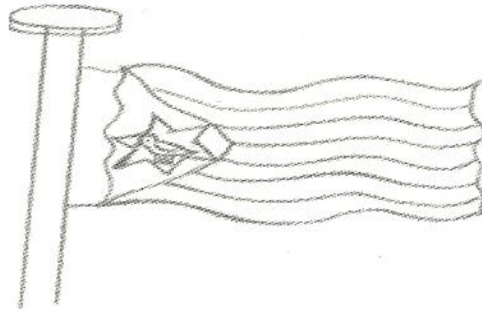


- A at a church.
B at a synagouge.
C at the temple.
D at a court .
2. How many days did God take to create heaven and earth and all the creatures?
A three days.
B five days.
C six days.
D forty days.
3. What do we call a person who dies for his religion?
A a hero.
B a martyr.
C a disciple.
D a Christian.
4. “This is my beloved son in whom I am well pleased.” Who said these words?
A John the Baptist
B Zecharia the Preist
C the angel Gabriel
D God the Almighty
5. What do we call an earthly story with a heavenly meaning?
A A parable.
B A proverb.
C A folktale.
D A mystery.
6. It was called **a place of skulls**. Where was Jesus crucified?
A Golgotha
B Gathesmane
C Mount Trunfiguration
D Mount Moriah

7. For only 30 pieces of silver coins his master was worth betraying. After betraying Jesus, Judas went on to ----- .
A buy a field
B crucify him
C hang himself
D confess his sins
8. William Tyndale wanted to translate the Bible into ----- .
A Spanish
B Germany
C English
D French
9. Esther was a brave woman because she ----- .
A killed the man who was troubling her
B killed a lion
C saved her people from being killed
D was the King's favourite wife
10. God did not punish the people of Nineveh because ----- .
A They feared Jonah
B Jonah preached the word of God
C Jonah was sorry for what he did
D People of Nineveh were sorry of their wickedness
11. In the parable of the sower, seeds that fell on the path represent Christians who- ?
A when they hear God's word harden their hearts.
B when they hear God's word grow in loving Christ.
C when they hear God's word love one another.
D when they hear God's word do good.
12. Why did David spare Saul's life?
A David respected leaders anointed by God.
B David was afraid of Saul.
C David could not kill his friend's father.
D David and Saul were good friends.
13. Traditionally chiefs are buried ----- .
A on an anthill
B in a cave
C near the river
D on a mountain top

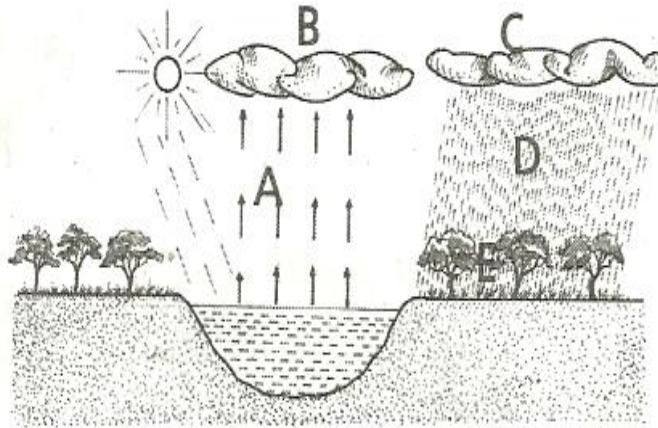
14. If you say something bad about the fruits in forest you may be punished by ----- .
A falling sick
B wondering about lost
C being bitten by a snake
D coming face to face with lions
15. Which missionary was sent by Cecil John Rhodes to ask King Lobengula for prospecting rights to dig for minerals?
A Father Goncalo da Silveira
B Father Don Diogo.
C David Livingstone.
D JS Moffat.
16. Two nationalists who died of bomb attacks in Zambia were
A Tongogara and Nikita Mangena.
B Chitepo and JZ Moyo.
C Silundika and Leopold Takawira.
D Edison Sithole and Rekai Tangwena.
17. When a baby is suffering from ----- he is lacking proteins.
A whooping cough
B measles
C kwashiokor
D cholera
18. What are perishable foods?
A Foods that can be canned.
B Foods that can be eaten raw.
C Foods that do not easily go bad.
D Foods that can easily decay.
19. Babies should be protected from the six killer diseases by ----- .
A breast feeding
B immunizing them
C giving them thin porridge
D giving them grape water
20. What is meant by overpopulation?
A Too many people living in a small area.
B Too many people living in an area as compared to the available resources in that area.
C Too few people living in a large area.
D People crowded in an area with a lot of resources.

21. The picture below shows the Zimbabwe National Flag.



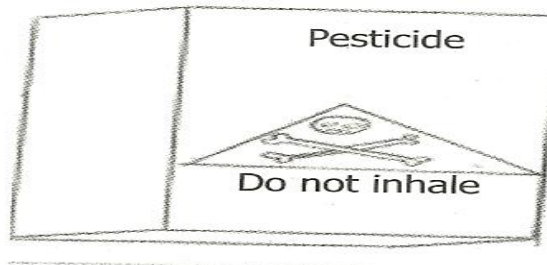
- On the flag our aspirations are symbolised by ----- .
- A the green colour.
 B the Zimbabwe bird.
 C the star.
 D black colour.
22. A country is governed by the ----- of the country.
 A army
 B police
 C constitution
 D Judiciary
23. Which of the following is a law in this country?
 A You must not take someone's life.
 B You can keep right when driving.
 C You cannot marry at the age of 18.
 D You cannot change your religion.
24. Which of the following is a means of communication?
 A An electric globe.
 B A radio.
 C A mirror.
 D An engine.
25. When we say Zimbabwe is landlocked we mean that it has----- .
 A no railway network
 B a road that leads to the coast
 C no coast line
 D no ships and boats
26. A place where cloth is manufactured is a ----- .
 A spinning industry
 B cloth industry
 C weaving industry
 D textile industry

27. The Central Bank of Zimbabwe is the ----- .
 A Standard Chartered Bank
 B Commercial Bank of Zimbabwe
 C Reserve Bank of Zimbabwe
 D Post Office Savings Bank
28. A person who is not employed by anyone but earns a living is ----- .
 A self employed
 B semi-skilled
 C a vendor
 D a smuggler
29. The Organisation of African Unity changed its name to ----- .
 A African Unity
 B United Nations
 C European Union
 D African Union
30. The diagram below shows a water cycle.



- What is happening at C?
 A Evaporation.
 B Condensation.
 C Cloud formation.
 D Raining.
31. It is possible that water which appears to be clean to the naked eye could ----- .
 A cure you of an illness
 B be really clean
 C have germs
 D have fish

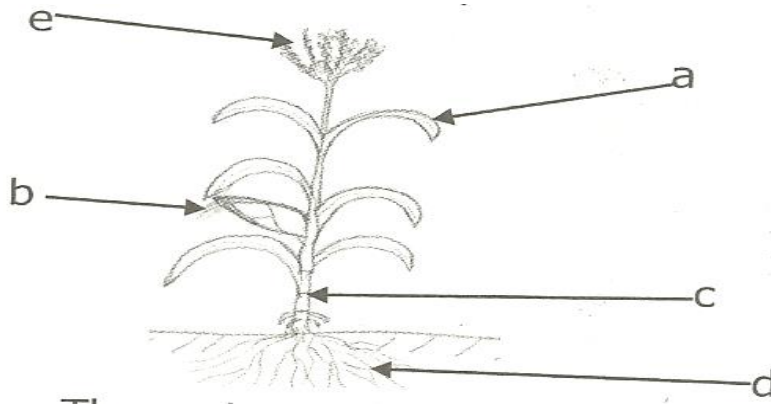
32. Which of the following soils is sticky and does not allow water to pass through easily?
 A Silt.
 B Sand.
 C Clay.
 D Loam.
33. Which of the following is **not** an agent of weathering?
 A Extreme temperature changes.
 B Animal action.
 C Human action.
 D Air.
34. ----- is the process which forms soil.
 A Weathering
 B Siltation
 C Soil erosion
 D Friction
35. Study the picture below and answer the questions that follow.



- The triangle on the container shows a ----- .
 A skeleton
 B danger warning sign
 C head and bones
 D cartoon
36. The instruction “Do not inhale” means ----- .
 A it is a pesticide
 B do not open the packet
 C do not breathe in
 D it is safe to use
37. Decayed plant and animal matter form ----- .
 A top soil
 B compost
 C humus
 D soil

38. What do we call the process of planting and growing of trees to replace those that have been used up?
 A Afforestation.
 B Deforestation.
 C Reforestation.
 D Forestation.

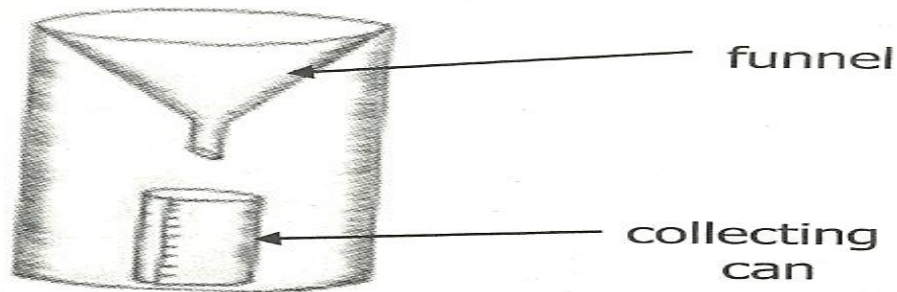
39. The diagram below shows a maize plant. The part marked [e] is the ----- .



- A cob
 B leaf
 C stem
 D tassels
40. The maize plant is pollinated by ----- .
 A bees
 B wind
 C worms
 D rain
41. Humans reproduce when the mother's egg and the father's ----- join.
 A ovum
 B sperm
 C blood
 D penis
42. Blood collects digested food from the ----- to the liver
 A stomach
 B intestines
 C mouth
 D lungs

43. Which of the following diseases is spread by tsetse flies?
 A malaria
 B sleeping sickness
 C chicken pox
 D whooping cough

Study this diagram and answer questions below.



44. What name is given to this instrument?
 A Anemometer.
 B Rain gauge.
 C Hygrometer.
 D Thermometer .
45. When rainfall has been collected in the above set up, it is measured in ----- .
 A litres
 B grams
 C millimetres
 D centimetres
46. When sea water is heated, it evaporates leaving ----- .
 A powder
 B soda
 C sugar
 D salt
47. On a map a figure like 1: 500 is the ----- .
 A distance
 B scale
 C temperature
 D mileage
48. To guide the reader a map should have a ----- .
 A key
 B compass
 C landform
 D river

49. When cleaning the toilet you must ----- to avoid infection.
- A wear a work suit
 - B wear gloves
 - C wear an apron
 - D wear an overall
50. Where can you find gathers on a garment?
- A On the hem.
 - B At the zip.
 - C At the pocket.
 - D On the waist.