

HOME BASED EDUCATION SECTION
GRADE 7 EXAMINATION 2012

GENERAL PAPER

PAPER 1

NOVEMBER 2020

Time: 2 hours

INSTRUCTIONS TO CANDIDATES

1. Read **all** the instructions carefully.
2. Do **not** open this booklet until you are told to do so by the invigilator.
3. If you **do not** understand the instructions ask the invigilator to explain them to you before you start.
4. Answer **all the** questions on a separate answer sheet.



1. When the Israelites were hungry in the desert God gave them ----- to eat.
A wine
B honey
C manna
D milk
2. Joseph's brothers sold him to the Ishmaelite traders out of ----- .
A anger
B fear
C greedy
D jealousy
3. Abraham was asked by God to sacrifice his son ----- .
A Joseph in Egypt
B Moses on Mt Sinai
C Isaac on Mt Moriah
D John at River Jordan
4. Lot's wife disobeyed God and she turned into a -----.
A heap of ashes
B pillar of salt
C brimstone of fire
D anthill
5. The human beings and animals in Noah's Ark survived the -----.
A fire
B flood
C storm
D war
6. Whose power came from his hair because he was a Nazarite?
A Samson.
B Samuel
C Steven
D Saul
7. How did David kill the giant Goliath?
A He used a sword.
B He used a sling.
C He used a spear.
D He used a knife.
8. What do we learn from the parable of the ten virgins?
A To be good wives.
B To be clever girls and prepare for our marriage.
C Polygamy is a good thing before God.
D To be prepared spiritually all the time.



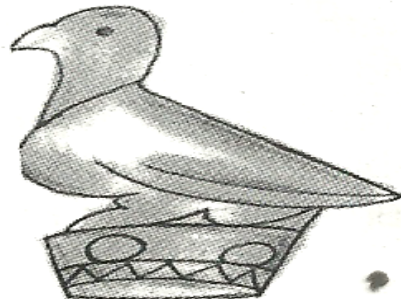
9. To which of the following do Moslems pray?
 A They pray to God.
 B They pray to Allah.
 C They pray to Buddha.
 D They pray to Yahweh.
10. What is the Torah? It is the -----.
 A New Testament
 B Old Testament
 C Holy Bible and all its books
 D first five books of the Old Testament
11. The most special day of the week for the followers of Judaism is the -----.
 A Sabbath
 B Sunday
 C Friday
 D Ramadan
12. A **bira/ukuthethela** is held by African Traditional Religion followers in order to ---

 A communicate with the ancestors in times of trouble.
 B worship the ancestral spirits during the ceremony.
 C offer the spirits an ox or goat.
 D drink beer and eat goat meat.
13. In African Traditional Religion prayers for rain are usually held under a ---- tree.
 A musasa/ igonde
 B mupfuti/itshabela
 C mupembere/umbondo
 D muhacha/umkhuna
14. A good friend will not encourage you to ----- .
 A take drugs
 B listen to music
 C go to any church
 D visit an HIV patient
15. What did the San people use to carry water?
 A ostrich egg shells
 B clay pots
 C plastic containers
 D metal tins
16. Great Zimbabwe ruins was built by which group of people?
 A The Rozvi.
 B The Mutapas.
 C The Ndebele.
 D The Tonga.



17. The Shona and the Portuguese traded in ----- .
 A guns and food
 B beer and wine
 C diamond and rhino horns
 D cloth, gold and beads
18. Who succeeded Mzlikazi as king of Matebeleland?
 A Mavhura
 B Kapararidze
 C Mkwati
 D Lobengula
19. Which of the following is true?
 A The first Prime Minister of Zimbabwe was Morgan Tsvangirai.
 B The first Prime Minister of Zimbabwe was Joshua Nkomo.
 C The first President of Zimbabwe was Robert Mugabe.
 D The first Prime Minister of Zimbabwe was Robert Mugabe.
20. The population of a country is determined by through a ----- .
 A clinic record
 B vote counting
 C national census
 D registration record

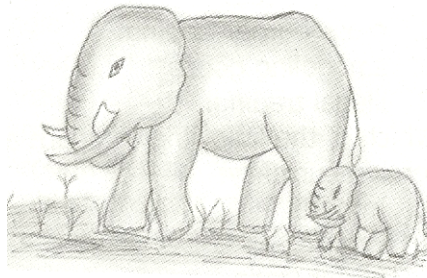
21. Below is a Zimbabwe bird.



Which of these statements is true about the Zimbabwe bird?

- A The Zimbabwe bird is a national dress.
 B The Zimbabwe bird is a national statue.
 C The Zimbabwe bird is a national badge.
 D The Zimbabwe bird is a national emblem.
22. Which of the following can be caused by over eating?
 A rickets
 B obesity
 C beriberi
 D goitre
23. What is the staple food for Zimbabweans?
 A rice.

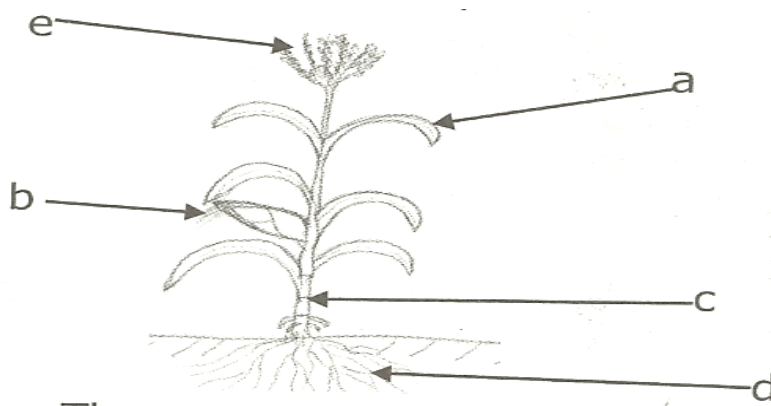
- B bread.
C potatoes.
D sadza.
24. From Lake Kariba we get cheap protein rich food which is ----- .
A iodine
B matemba
C bread
D beans
25. Which of the following pairs is a pair of vectors [animals that can spread germs]?
A ants and flies
B locusts and mosquitoes
C houseflies and cockroaches
D worms and bees
26. Round grass thatched huts are usually found in ----- .
A urban areas
B rural areas
C at schools
D in mining towns
27. To warn neighbours of an attack by enemies long ago people used ----- .
A a messenger
B smoke
C telephones
D bows and arrows
28. When there is too much money without value in a country, this is called ----- .
A investment
B wealth
C inflation
D accounts
29. Look at the picture below. It represents wild animals in the National Parks. Which of the following areas would you expect to find such animals kept?



- A Chinhoyi
B Hwange
C Gweru

D Chipinge

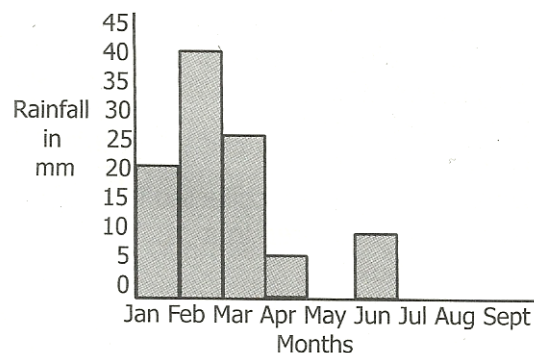
30. When water rises naturally to the surface it forms a ----- .
A river
B well
C lake
D spring
31. When water vapour meets cold air what happens?
A Water turns into a gas.
B Evaporation takes place.
C Ice is formed.
D Condensation takes place.
32. The washing away of top soil by rain is called ----- .
A erosion
B siltation
C disposition
D weathering
33. Grass roots serve the purpose of ----- .
A encouraging erosion
B gripping the soil
C weakening the soil
D making the soil dry
34. Where animals live naturally it is their ----- .
A burrows and holes
B natural habitat
C forests
D grasslands
35. This is a maize plant .The parts marked [c] and [d] are ----- .



- A cob and stem
B stem and leaf

- C stem and pith
D stem and roots
36. The maize plant is pollinated by ----- .
A bees
B wind
C ants
D rain
37. What kind of fuel do we get from the jatropher tree?
A electricity
B paraffin
C firewood
D diesel
38. Lungs must have a constant supply of ----- .
A water vapour
B carbon monoxide
C carbon dioxide
D oxygen
39. The best way to put out an electric fire is to ----- .
A cover the flame with a tent
B use water mixed with soap
C use a fire extinguisher
D use dry soil

This is a graph showing rainfall patterns. Use it to answer questions that follow.

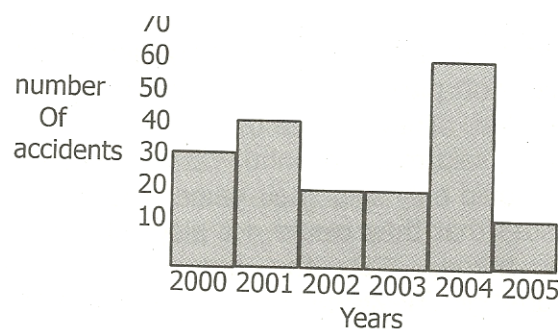


40. Farmers would like low rainfall in April to allow ----- .
A their fields to be wet
B their crops to ripen
C herbs to dry up
D pests to die
41. Farmers interested in irrigation need the February rainfall to ----- .
A grow some sunflower
B sell their green maize

- C fill their dams
- D feed their cattle in green maize

42. School children would not like the June rains because ----- .
- A they will wear cotton clothes
 - B they will feel very cold
 - C they would not want to do Physical Education.
 - D they will not learn properly
43. Which of the following items is a machine ----- .
- A bed
 - B basin
 - C stool
 - D rake
44. What the HIV virus does to the body is to ----- .
- A attack the liver
 - B weaken its intestines
 - C destroy its immune system
 - D destroy its urinary system
45. Which type of soil has the largest soil particles?
- A clay
 - B loam
 - C sand
 - D silt

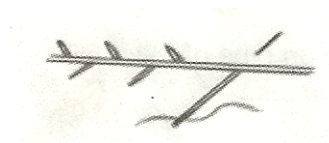
The graph below shows a number of industrial accidents that took place in Harare.



46. Which year had the highest number of accidents?
- A 2002
 - B 2003
 - C 2004
 - D 2005
47. To avoid many accidents in industries workers should ----- .

- A report for work in time
- B work in groups
- C work harder
- D receive safety education

48. After using the toilet you are advised to ----- .
- A wash your hands with clean running water
 - B wipe your hands with tissue paper
 - C spit in the toilet
 - D lock the door
49. Why are darts and pleats important on a garment? They ----- .
- A add colour to it
 - B shorten it
 - C lengthen it
 - D shape it
50. This is a diagram of a ----- stitch.



- A back
- B fish borne
- C blanket
- D button

Grade Five General Paper 1 Answers
2012 End of Year Examinations

1. C
2. D
3. C
4. B
5. B
6. A
7. B
8. D
9. B
10. D
11. A
12. A
13. D
14. A
15. A
16. A
17. D
18. D
19. D
20. C
21. D
22. B
23. D
24. B
25. C



Grade 7 General Paper 1 Answers
2020 Examinations

- 26. B
- 27. B
- 28. C
- 29. B
- 30. D
- 31. D
- 32. A
- 33. B
- 34. B
- 35. D
- 36. B
- 37. D
- 38. D
- 39. D
- 40. B
- 41. C
- 42. B
- 43. D
- 44. C
- 45. C
- 46. C
- 47. D
- 48. A
- 49. D
- 50. B

