
**RG MUGABE EXAMINATIONS
GRADE SEVEN GENERAL PAPER 1
END OF YEAR EXAMINATIONS**

TIME: 2 HOURS

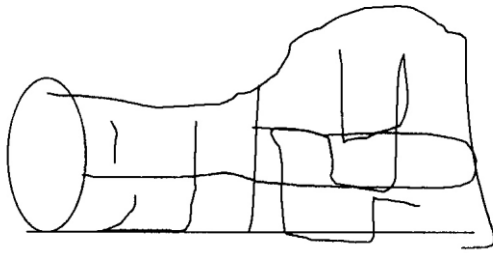
INSTRUCTIONS TO CANDIDATES

1. *READ ALL INSTRUCTIONS CAREFULLY*
2. *DO NOT OPEN THIS BOOKLET UNTIL YOU ARE TOLD TO DO SO BY THE INVIGILATOR.*
3. *WHEN YOU ARE TOLD TO START, CHOOSE ONE CORRECT ANSWER FROM THE SUGGESTED ANSWERS.*
4. *IF MORE THAN ONE LETTER IS WRITTEN FOR ANY ONE ANSWER, THAT ANSWER WILL BE REGARDED AS WRONG.*
5. *IF YOU DO NOT UNDERSTAND THE INSTRUCTIONS ASK THE INVIGILATOR TO EXPLAIN THEM TO YOU BEFORE YOU START.*
6. *ANSWER ALL THE QUESTIONS ON THE SEPARATE ANSWER SHEET PROVIDED*

1. What do we mean when you say "God is just?"
A. Holy B. Good C. Patient D. Fair
2. Muhammad was aprophet.
A. Bhuddhist B. Hindu C. African tradition C. Muslim
3. Who was Esau's brother?
A. Isaac B. Ishmael C. Jacob D. Abraham
4. If you see an injured person should
A. talk to the person B. leave the person alone
C. show the person compassion and offer help D. touch the person, s clothes
5. The parable of the prodigal son teaches.....
A. honesty B. hatred C. forgiveness D. faithfulness
6. Who was a capenter?
A. Peter B. Joseph C. Mathew D. James
7. Which of the following religious man was a spirit medium?
A. Moses B. Elisha C. Kaguvi D. Jacob
8. Who was thrown in a den of lions?
A. Barnabas B. Joshua C. Daniel D. Silas
9. What was mother Theresa's talent?

- A. Love for the disadvantaged B. working with different Christian groups
 B. preaching the gospel of God D. building schools
10. in African religion, people communicate with God through.....
 A. visions B. evil spirits C. ancestral spirits D. dreams
11. Why did Jesus die on the cross?
 A. he had no friends B. he refused to obey the devil
 C. so that our sins would be forgiven D. to go to heaven
12. If people wrong you, you should
- A. report them B. fight them C. forgive them D. ignore them
13. The other name for disciple is
- A. messenger B. preacher C. prophet D. apostle
14. What do Christians remember on Christmas?
 A. the baptism of Jesus B. the death of Jesus
 C. the birth of Jesus D. the second coming of Christ
15. Fruits are rich in
- A. proteins B vitamins C. carbohydrates D. fats
16. In Zimbabwemakes laws.
 A. Parliament B. Police C. President D. Army
17. Which one below is a health personnel?
 A. tailor B. baker C. dentist D. driver
18. Who was involved in the Second Chimurenga war?
 A. Jairos Jiri B. Methew Rusike C. Jason Z. Moyo D. Felix Tangawarima
19. People of long ago in Zimbabwe wore clothes made of
- A. rubber B. wool C. nylon D. animal skin
20. Our country needsto trade with other countries.
 A. money orders B. postage stamp
 C. Zimbabwean dollar D. foreign currency
21. Why do people move from rural to urban areas?
 A. to visit sporting facilities B. because they want to make new friends
 C. because the want to live in one place
 D. to find work and better living conditions
22. Money collected by a government on imported goods
- A. school fees B. monthly rates C. customs duty D. income tax
23. Which one is a source of clean water?
 A. river B. pond C. borehole D. dam

24. Which form of shelter is shown?



A. tents B. pyramid C. mosque D. igloo

25. Foods which can easily go bad are called.....

A. non perishables B. proteins C. perishables D. energy giving foods

26. Radios, telegrams, newspapers and telephones are different types of.....

A. transport B. entertainment C. advertising D. communication

27. The main reason for wearing clothes is for.....

A. showing off the latest fashion B. protection against weather
C. uplifting one's standards of living D. modeling purposes

28. What makes up the wealth of a nation?

A. size of the country B. bridges, roads and buildings
C. natural resources D. money and credits

29. Which are the six killer disease?

A. Whooping cough, tuberculosis, measles, tetanus, poliomyelitis and diphtheria.
B. Diphtheria, whooping cough, tetanus, diarrhea, poliomyelitis, and measles.
C. Marasmas, kwashiorkor, scabies, measles, bilharzias, and tetanus
D. Bilharzia, kwashiorkor, measles, tetanus, whooping cough and scabies.

30. The organisation that helps displaced persons during the war is.....

A. PTA B. SPCA C. WHO D. UNHCR

31. What type of fuel is used by steam engines?

A. paraffin B. petrol C. electricity D. coal

32. In Zimbabwe bloodwood trees are.....

A. indigenous B. softwood C. exotic D. citrus

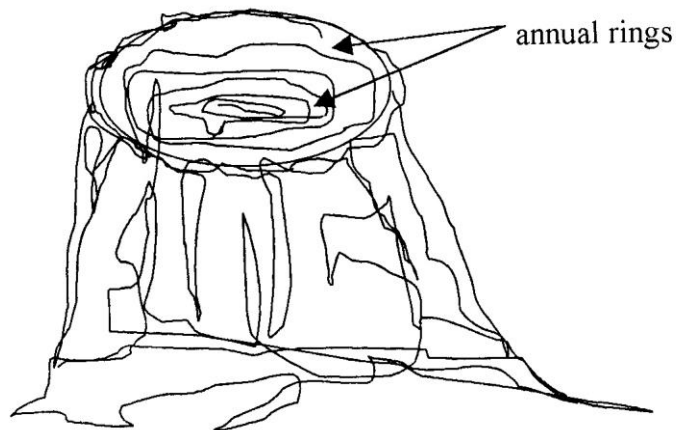
33. Solar energy comes from the

A. moon B. earth C. air D. sun

34. Tyres of bicycle get worn out because of.....

A. height B. heat C. pressure D. friction

35. The diagram shows the annual rings of a tree trunk.



The annual rings in this tree trunk show.....

- A. that the tree is dry
- B. axe marks
- C. age of the tree
- D. that the tree is temperate

36. Which soil is most suitable for growing vegetable?

- A. rocky soil
- B. silt
- C. loam soil
- D. sandy soil

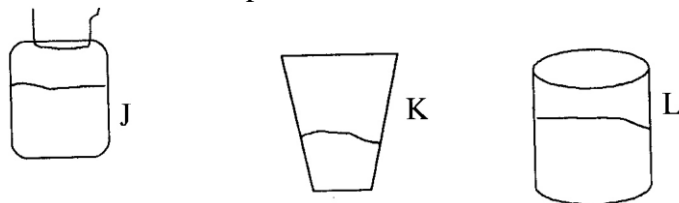
37. Which of the following animals is a carnivore?

- A. lion
- B. zebra
- C. buffalo
- D. kudu

38. What comes out of kettle when water is boiling?

- A. water
- B. steam
- C. ice
- D. drops

39. 100 grammes of soil were poured in each of the containers shown below:



Which of the following statements is correct?

- A. L has the greatest amount of soil
- B. K has the least amount of soil
- C. K and L have the same amount of soil
- D. K and J have different amounts of soil

40. The In wheat leaf shows that it belongs to the grass family.

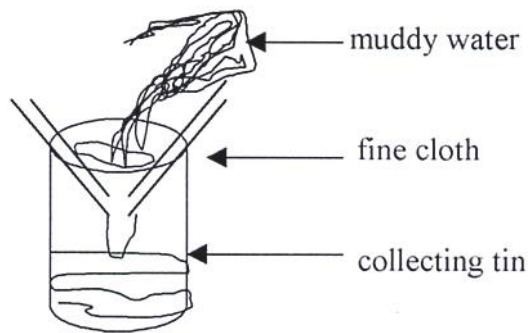
- A. yellowish colouring
- B. long hairs
- C. branching veins
- D. parallel veins

41. The diagram shows the mother's egg and father's sperm join when humans reproduce.



Which diagram shows a fertilized egg?

42. The diagram shows some apparatus used to make muddy water clear.



This water can be made safe to drink by.....

- A. boiling B. freezing C. siltation D. filtering

43. The diagram below shows the results of an experiment to grow cuttings



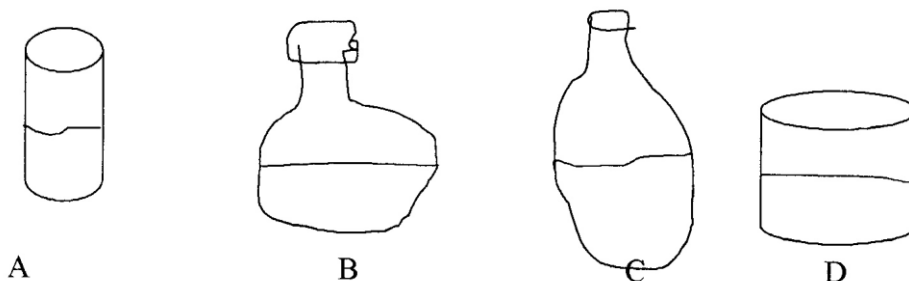
The results show that.....

- A. grape trees do not grow from cuttings B. all trees do not grow from cuttings
C. mulberry trees do not grow from cuttings D. paw-paw trees do not grow from cuttings

44. What is protected by the skull?

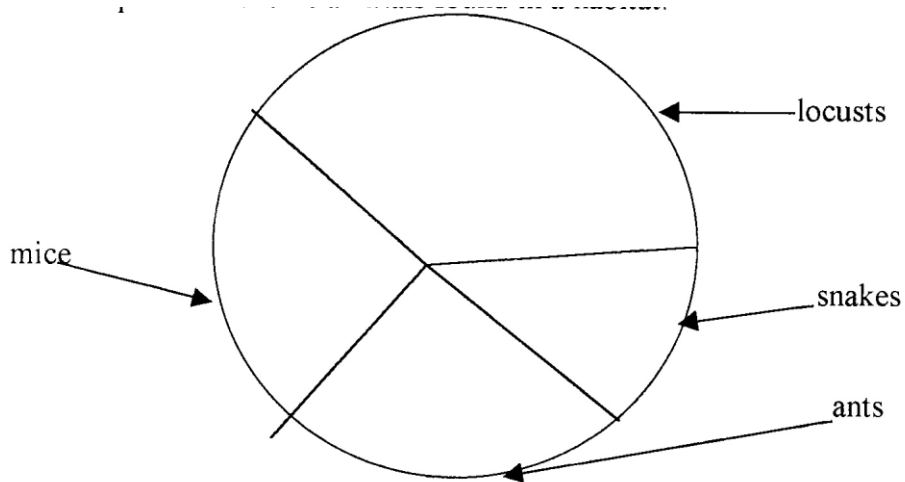
- A. lungs B. brain C. heart D. intestines

45. Four containers with equal amounts of water are shown.



From which container does water evaporate quickest?

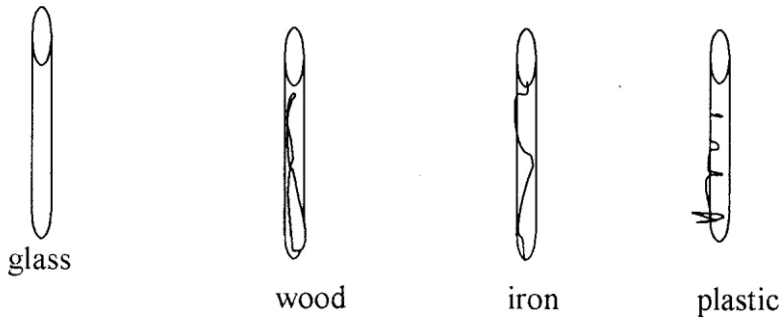
46. The pie chart shows animals found in a habitat.



Which is the most common creature?

- A. ants B. locusts C. mice D. snakes

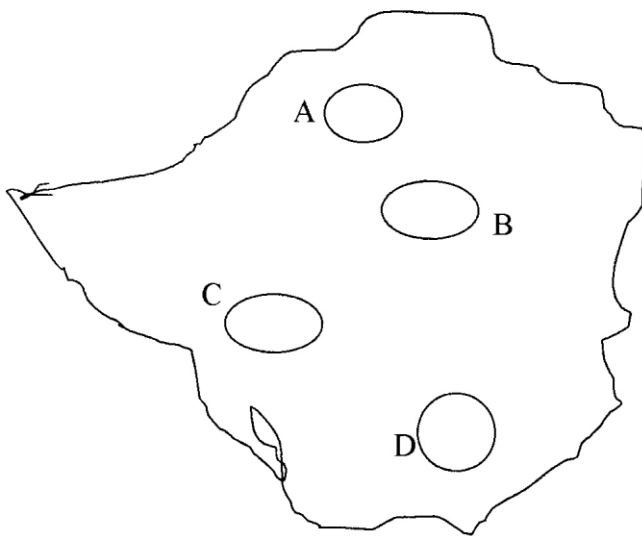
47. Rods of equal length but made of different materials were placed in sunlight for one hour.



Which rod was the hottest?

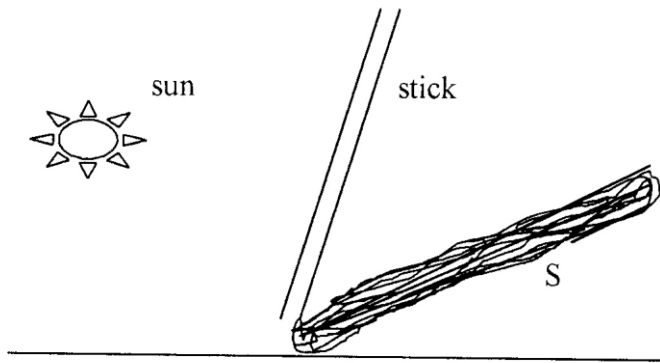
- A. wood B. plastic C. glass D. iron

48. Study the map of Zimbabwe.



In which area is sugar cane grown?

49. The diagram shows an experiment on light.



What does S represent?

- A. another stick B. reflection of the stick C. a shadow D. an image

50. The waste material produced when wood burns is called.....

- A. fire B. paper C. charcoal D. ashes

The End